

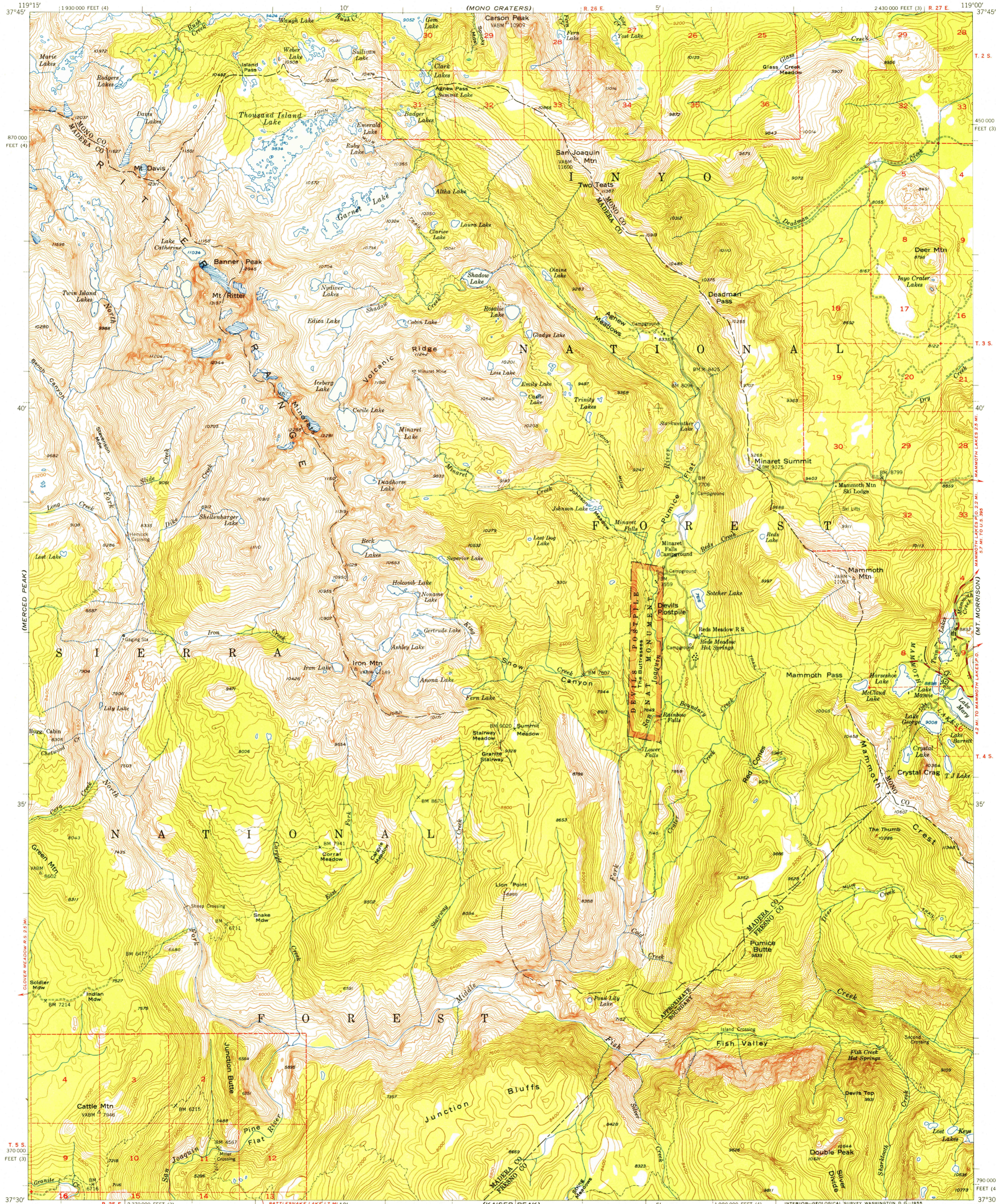
(MT. LYLE)
1:25,000

U.S.G.S.
FILE COPY
TOPOGRAPHIC DIVISION

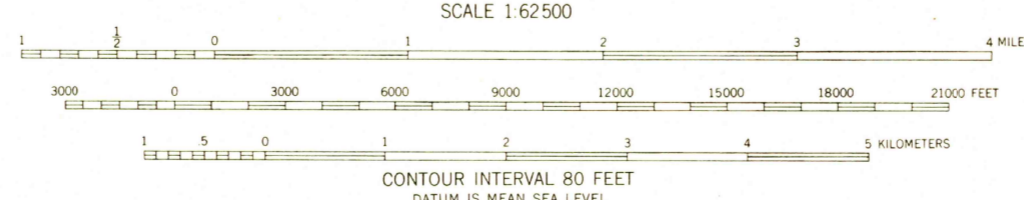
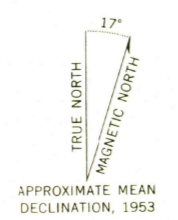
DEVILS POSTPILE QUADRANGLE
CALIFORNIA
15 MINUTE SERIES (TOPOGRAPHIC)

(MT. MORRISON)
1:25,000

UNITED STATES
DEPARTMENT OF THE INTERIOR
GEOLOGICAL SURVEY



Mapped, edited, and published by the Geological Survey
Control by USGS, USC&GS, and USBR
Topography from aerial photographs by multiplex methods
Aerial photographs taken 1952. Field check 1953
Polyconic projection. 1927 North American datum
10,000-foot grids based on California coordinate system,
zones 3 and 4
Dashed land lines indicate approximate locations
Unchecked elevations are shown in brown



USGS
Historical File
Topographic Division

ROAD CLASSIFICATION	
Heavy-duty	4 LANE 16 LANE
Medium-duty	4 LANE 16 LANE
Light-duty	Unimproved dirt
U.S. Route	State Route



U.S.G.S. FILE COPY
TOPOGRAPHIC DIVISION
DEVILS POSTPILE, CALIF.
N3730-W11900/15
1953

THIS MAP COMPLIES WITH NATIONAL MAP ACCURACY STANDARDS
FOR SALE BY U. S. GEOLOGICAL SURVEY, FEDERAL CENTER, DENVER, COLORADO OR WASHINGTON 25, D. C.
A FOLDER DESCRIBING TOPOGRAPHIC MAPS AND SYMBOLS IS AVAILABLE ON REQUEST

JUN 3 1953
2580