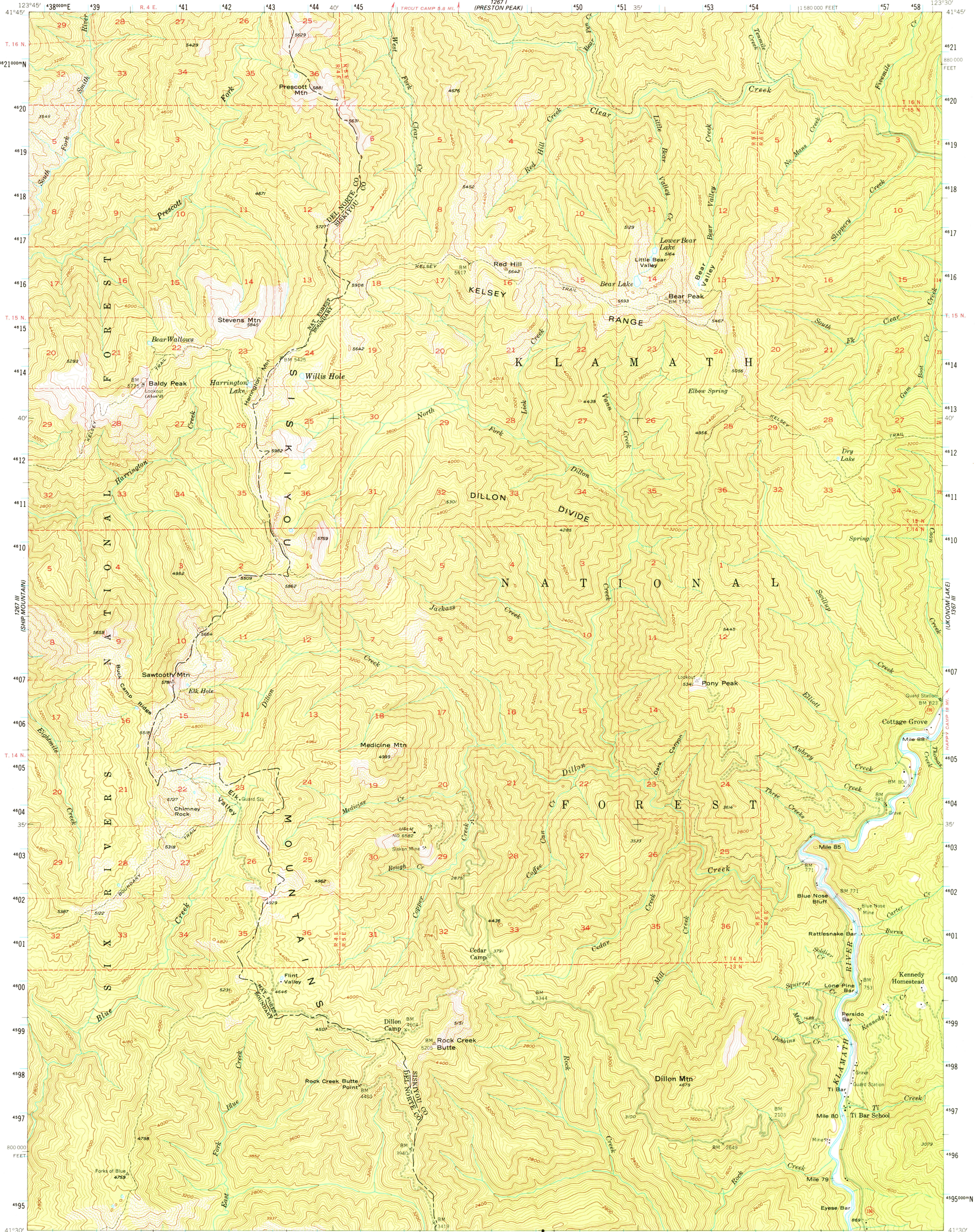


123°45' (GABOULET)

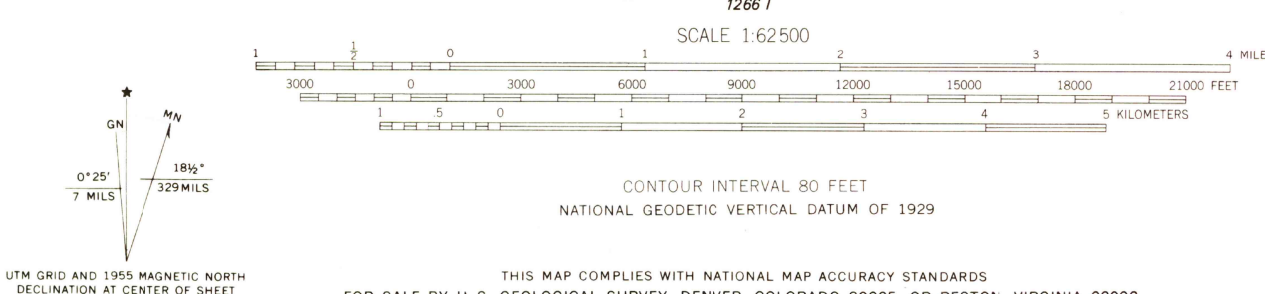
UNITED STATES
DEPARTMENT OF THE INTERIOR
GEOLOGICAL SURVEY

DILLON MTN. QUADRANGLE
CALIFORNIA
15 MINUTE SERIES (TOPOGRAPHIC)

123°30' (HAPPY CAMP)



Mapped, edited, and published by the Geological Survey
Control by USGS and USC&GS
Topography from aerial photographs by multiplex methods
Aerial photographs taken 1951. Field check 1955
Polyconic projection. 1927 North American datum
10,000-foot grid based on California coordinate system, zone 1
Dashed land lines indicate approximate locations
Certain land lines are omitted because of insufficient data
Unchecked elevations are shown in brown
1000-meter Universal Transverse Mercator grid ticks,
zone 10, shown in blue



ROAD CLASSIFICATION
Light duty ——— Unimproved dirt - - - - -
State Route ○

DILLON MTN., CALIF.
N4130-W12330/15
1955
AMS 1267 II—SERIES V795

CONTOUR INTERVAL 80 FEET
NATIONAL GEODETIC VERTICAL DATUM OF 1929
THIS MAP COMPLIES WITH NATIONAL MAP ACCURACY STANDARDS
FOR SALE BY U.S. GEOLOGICAL SURVEY, DENVER, COLORADO 80225, OR RESTON, VIRGINIA 22092
A FOLDER DESCRIBING TOPOGRAPHIC MAPS AND SYMBOLS IS AVAILABLE ON REQUEST



123°45' (PECTAN CREEK)

123°30' (FORKS OF SUTLOW)

OCT 0 8 1976

USGS
Historical File
Topographic Division