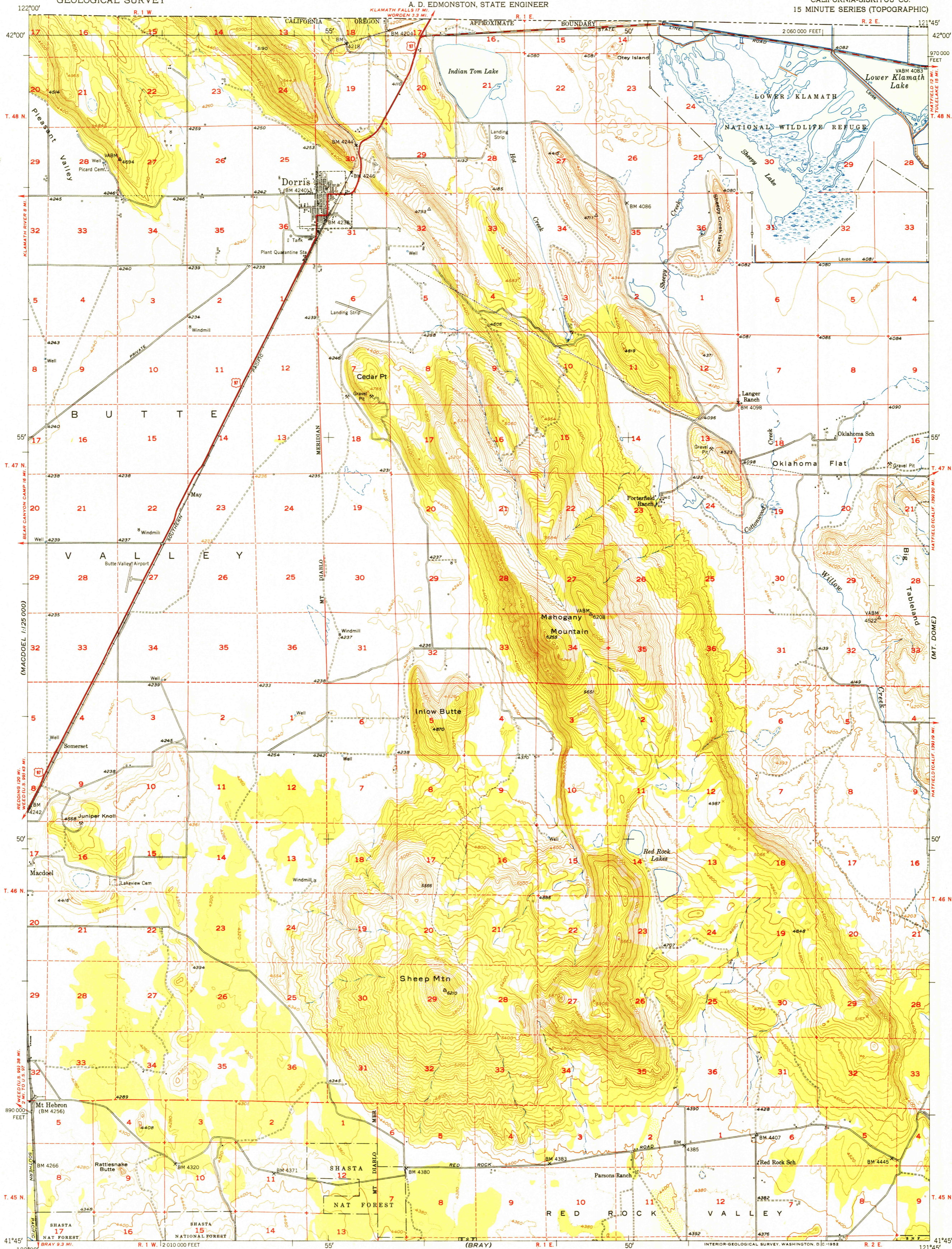
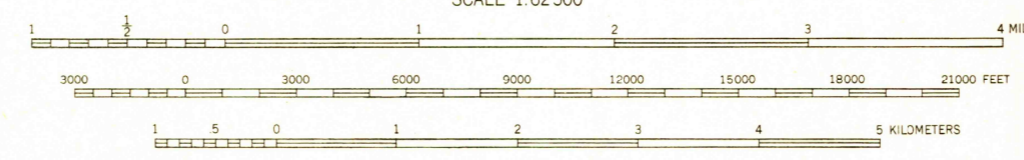


U. S. G. S.
FILE COPY
Inspection and Rating



Maped, edited, and published by the Geological Survey
Control by USGS, USC&GS, and USBR
Topography from aerial photographs by multiplex methods
and by plane-table surveys 1950
Aerial photographs taken 1948
Polyconic projection. 1927 North American datum
10,000-foot grid based on California coordinate system,
zone 1
Dashed land lines indicate approximate location
Unchecked elevations are shown in brown



CONTOUR INTERVAL 40 FEET
DOTTED LINES REPRESENT HALF-INTERVAL CONTOURS
DATUM IS MEAN SEA LEVEL

THIS MAP COMPLIES WITH NATIONAL MAP ACCURACY STANDARDS
FOR SALE BY U. S. GEOLOGICAL SURVEY, FEDERAL CENTER, DENVER, COLORADO OR WASHINGTON 25, D. C.
A FOLDER DESCRIBING TOPOGRAPHIC MAPS AND SYMBOLS IS AVAILABLE ON REQUEST

ROAD CLASSIFICATION

Heavy-duty	4 LANE 16 LANE	Light-duty
Medium-duty	2 LANE 16 LANE	Unimproved dirt

U. S. Route State Route

U. S. G. S.
FILE COPY
Inspection and Rating

DORRIS, CALIF.
N4145-W12145/15
1950

USGS
Historical File
Topographic Division

JUL 18 1952 2135