

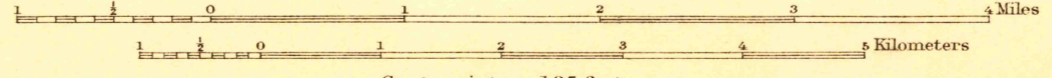
U. S. G. S.
FILE COPY
Inspection and Editing.

Henry Gannett, Chief Topographer.
A. P. Davis, Topographer in charge.
Triangulation by A. P. Davis.
Topography by Paul Holman.
Surveyed in 1893-94.

ENGRAVED OCT. 1896 BY U.S.G.S.

(Las Bolsas)

Scale 62500



Contour interval 25 feet.
Datum is mean sea level.

Edition of Nov. 1902, reprinted 1923.

U. S. G. S.
FILE COPY
Inspection and Editing.
USGS FEB 28 1923 /100
Historical File
Topographic Division

DOWNEY