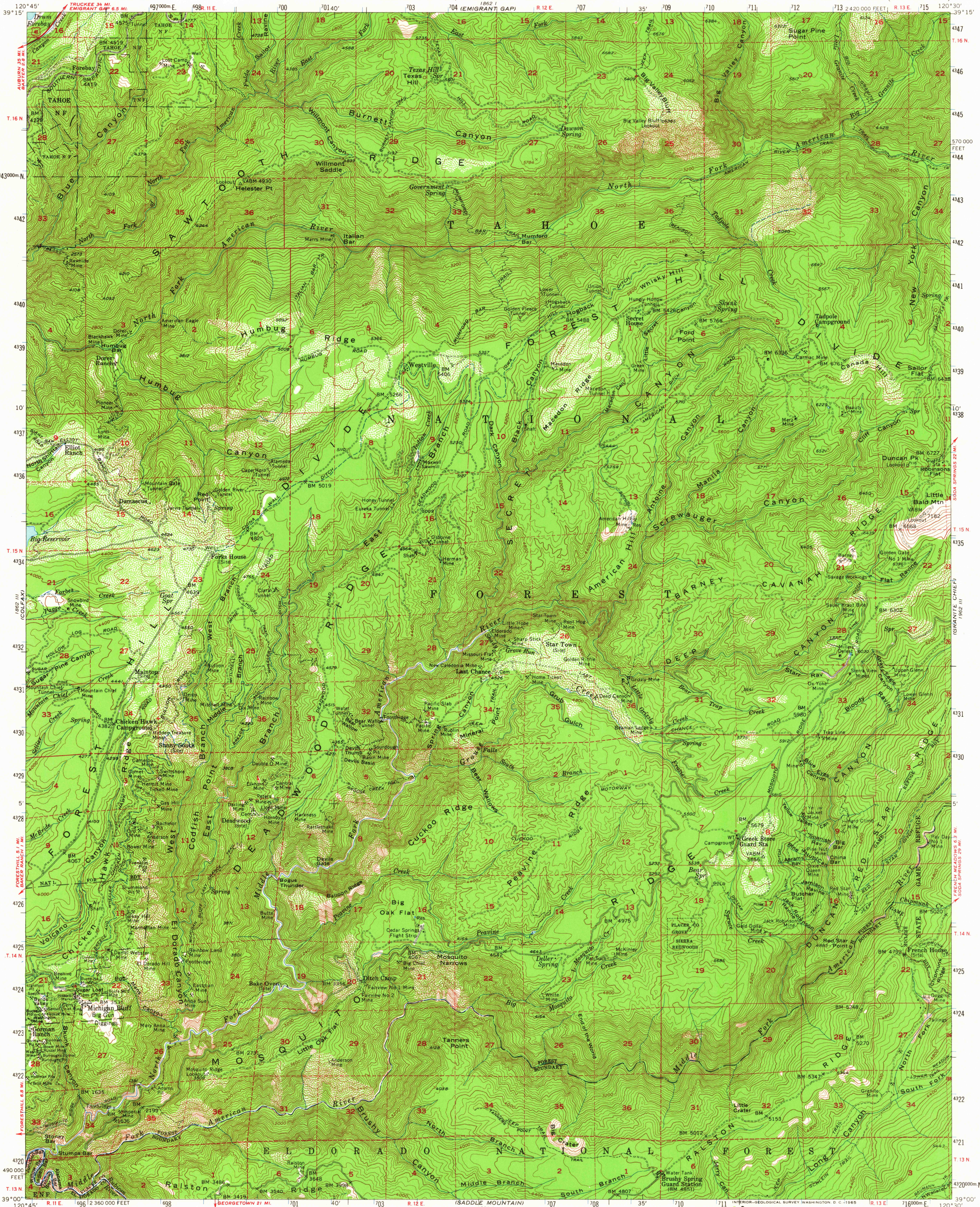


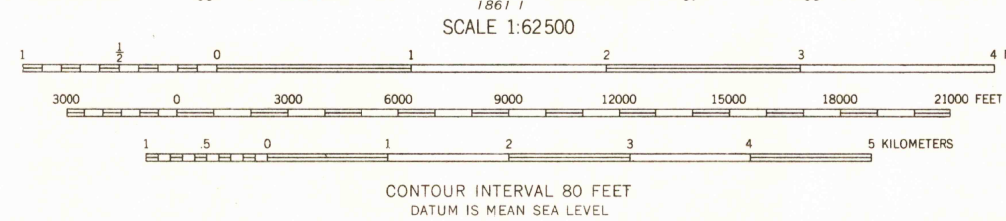
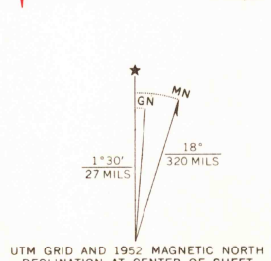
UNITED STATES
DEPARTMENT OF THE INTERIOR
GEOLOGICAL SURVEY

STATE OF CALIFORNIA
GOODWIN J. KNIGHT, GOVERNOR
HARVEY O. BANKS, DIRECTOR OF WATER RESOURCES

DUNCAN PEAK QUADRANGLE
CALIFORNIA
15 MINUTE SERIES (TOPOGRAPHIC)



Mapped, edited, and published by the Geological Survey
Control by USGS, USC&GS, and USFS
Compiled in 1958 from 1:24,000 scale maps of the
Duncan Peak, Westville, Michigan Bluff, and Greek Store
7.5 minute quadrangles, surveyed 1952
Topography from aerial photographs by multiplex methods
Aerial photographs taken 1948
Polyconic projection. 1927 North American datum
10,000-foot grid based on California coordinate system, zone 2
1000-meter Universal Transverse Mercator grid ticks,
zone 10, shown in blue
Dashed land lines indicate approximate locations
Unchecked elevations are shown in brown



USGS
Historical File
Topographic Division
ROAD CLASSIFICATION
Heavy duty
Light-duty
Unimproved dirt
U.S. Route
This area is also covered by 1:24,000 scale maps of
Duncan Peak, Westville, Michigan Bluff, and Greek Store
7.5 minute quadrangles, surveyed 1952
U.S.G.S. DUNCAN PEAK, CALIF.
N3900-W12030/15
15,525
JUN 1 6 1965
FILE COPY
TOPOGRAPHIC DIVISION

THIS MAP COMPLIES WITH NATIONAL MAP ACCURACY STANDARDS
FOR SALE BY U. S. GEOLOGICAL SURVEY, DENVER, COLORADO 80225 OR WASHINGTON, D. C. 20242
A FOLDER DESCRIBING TOPOGRAPHIC MAPS AND SYMBOLS IS AVAILABLE ON REQUEST