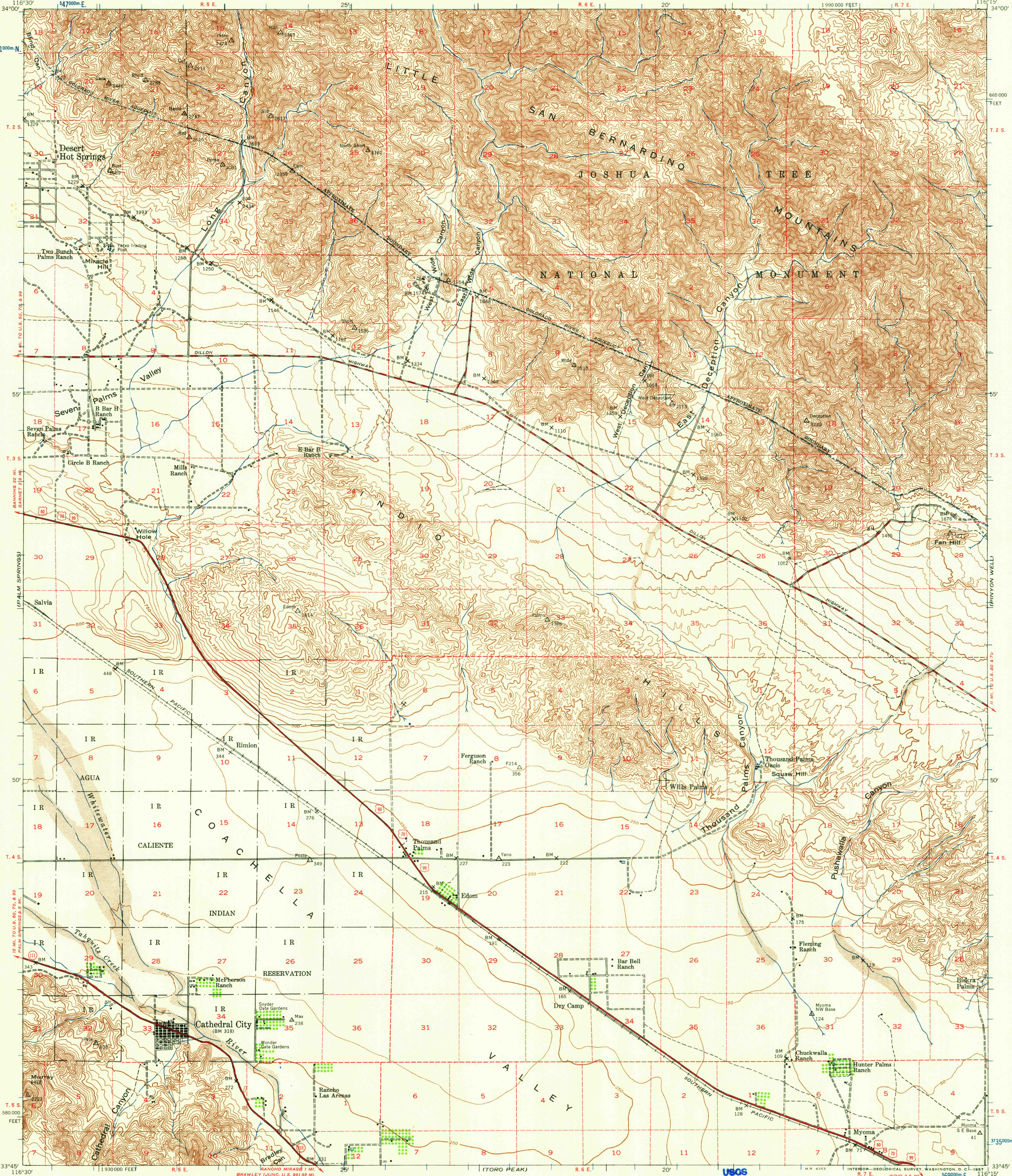


(SAN Geronimo)
1:12500

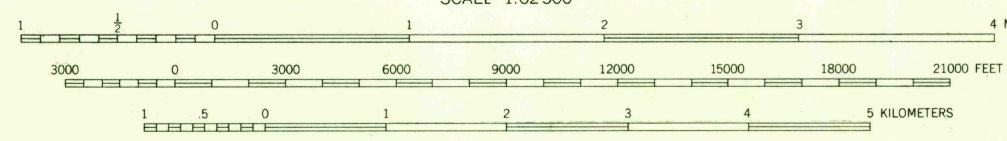
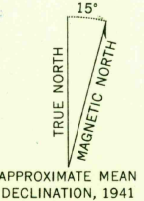
UNITED STATES
DEPARTMENT OF THE INTERIOR
GEOLOGICAL SURVEY

UNITED STATES
DEPARTMENT OF THE ARMY
CORPS OF ENGINEERS

EDOM QUADRANGLE
CALIFORNIA—RIVERSIDE CO.
15 MINUTE SERIES (TOPOGRAPHIC)



Mapped by the Army Map Service
Published for civil use by the Geological Survey
Control by USGS, USC&GS, Metropolitan Water Department
of Southern California, U. S. Bureau of Reclamation, and USCE
Topography from aerial photographs by photogrammetric methods
Aerial photographs taken 1941
Polyconic projection. 1927 North American datum
10,000-foot grid based on California coordinate system, zone 6
1000 meter Universal Transverse Mercator
Grid ticks, Zone 11, shown in blue
Dashed land lines indicate approximate locations
No distinction is made between barns, dwellings,
commercial and industrial buildings



CONTOUR INTERVAL 50 FEET
DATUM IS MEAN SEA LEVEL

USGS
Historical File
Topographic Division

ROAD CLASSIFICATION 1943
Heavy-duty ——— Light-duty ———
Medium-duty ——— Unimproved dirt ———
U. S. Route —○— State Route —○—



U.S.G.S.
FILE COPY
TOPOGRAPHIC DIVISION
EDOM, CALIF.
N 3345—W 11615/15
1941

FOR SALE BY U. S. GEOLOGICAL SURVEY, DENVER 2, COLORADO OR WASHINGTON 25, D. C.
A FOLDER DESCRIBING TOPOGRAPHIC MAPS AND SYMBOLS IS AVAILABLE ON REQUEST

NAME CHANGED TO THOUSAND PALMS 1540

DEC 28 1951