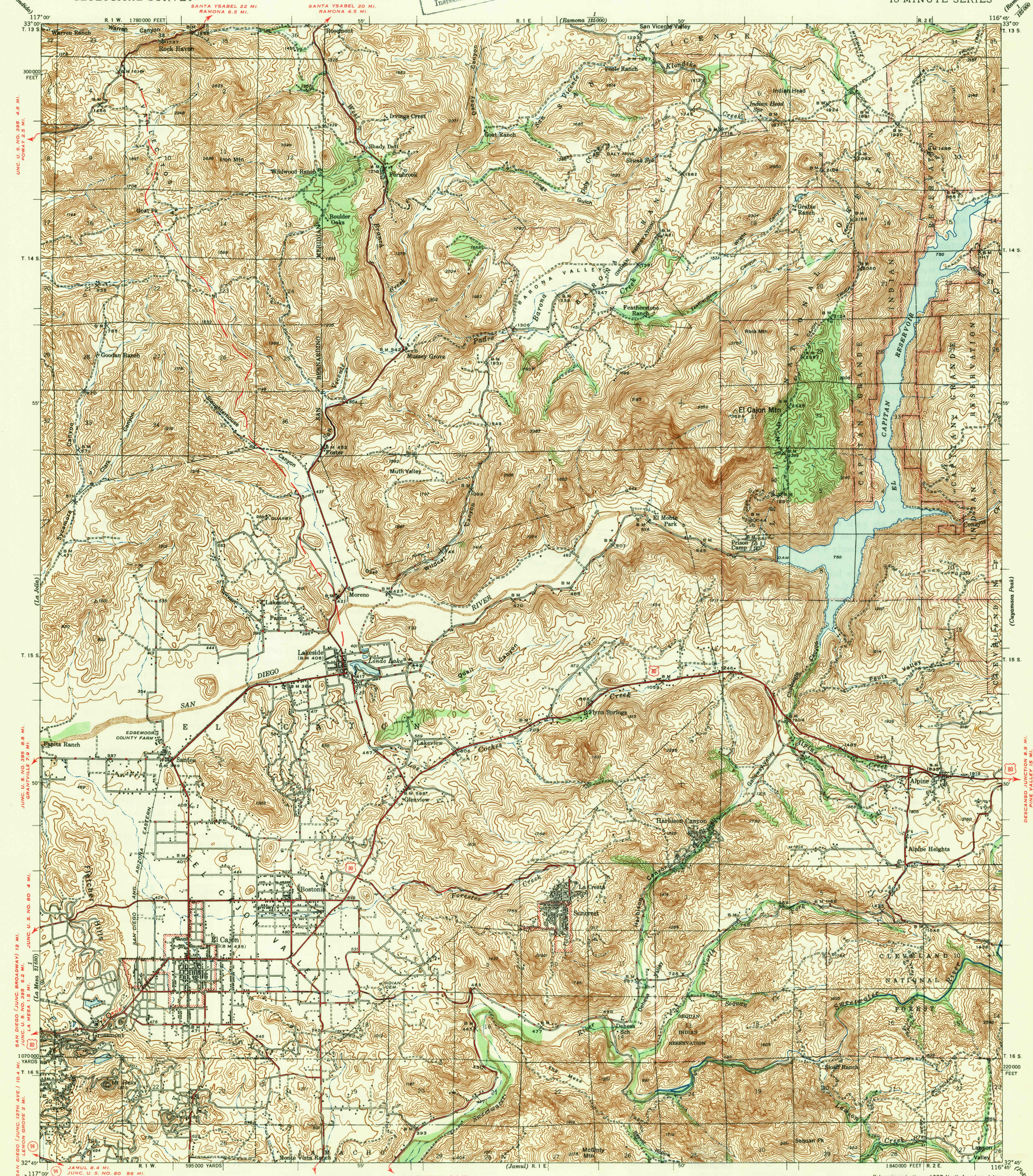
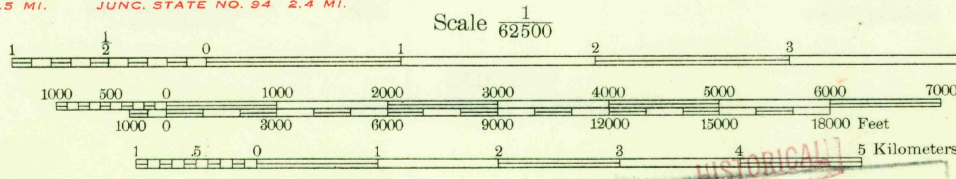


U. S. G. S.  
FILE COPY  
Inspection and Editing



(Escondido) 117° 00' 33" 00" W  
T. 13 S  
300 000 FEET  
UNC. U. S. NO. 395 4.8 MI.  
POWAY 2.5 MI.  
SANTA YSABEL 22 MI.  
RAMONA 6.5 MI.  
SANTA YSABEL 20 MI.  
RAMONA 4.5 MI.  
R. 1 W. 1780 000 FEET  
R. 1 E  
(Ramona 185 000)  
San Vicente Valley  
R. 2 E  
116° 45' 33" 00" W  
T. 13 S  
T. 14 S  
50'  
T. 15 S  
50'  
T. 16 S  
220 000 FEET  
R. 1 W. 595 000 YARDS  
R. 1 E  
(Jamul) R. 1 E  
117° 00' 32" 45" W  
T. 16 S  
220 000 FEET  
R. 2 E  
116° 45' 32" 45" W  
(Poway)

Topography by R. R. Monbeck, E. S. Rickard,  
L. O. Newsome, T. R. Forster, J. G. Collins,  
and E. F. Kulhan  
Surveyed in 1938-1939



Contour interval 50 feet  
Datum is mean sea level

ROAD CLASSIFICATION  
Dependable hard-surface heavy-duty road  
Secondary hard-surface all-weather road  
Loose-surface graded  
Unsurfaced, graded  
Dirt road  
U. S. Route  
State Route  
More than two lanes indicated along road with tick at point of change

Polyconic projection. 1927 North American datum  
5000 yard grid based on U. S. zone system, F  
10000 foot grid based on California (6)  
rectangular coordinate system  
Land lines pertaining to parts of T. 13,  
14 and 15 S., R. 1 E. and part of T. 15 S.,  
R. 2 E., are omitted because land plats and  
topography can not be reconciled

EL CAJON, CALIF.  
Edition of 1947  
N3245-W11645/15

USGS  
Historical File  
Topographic Division  
Inspection and Editing