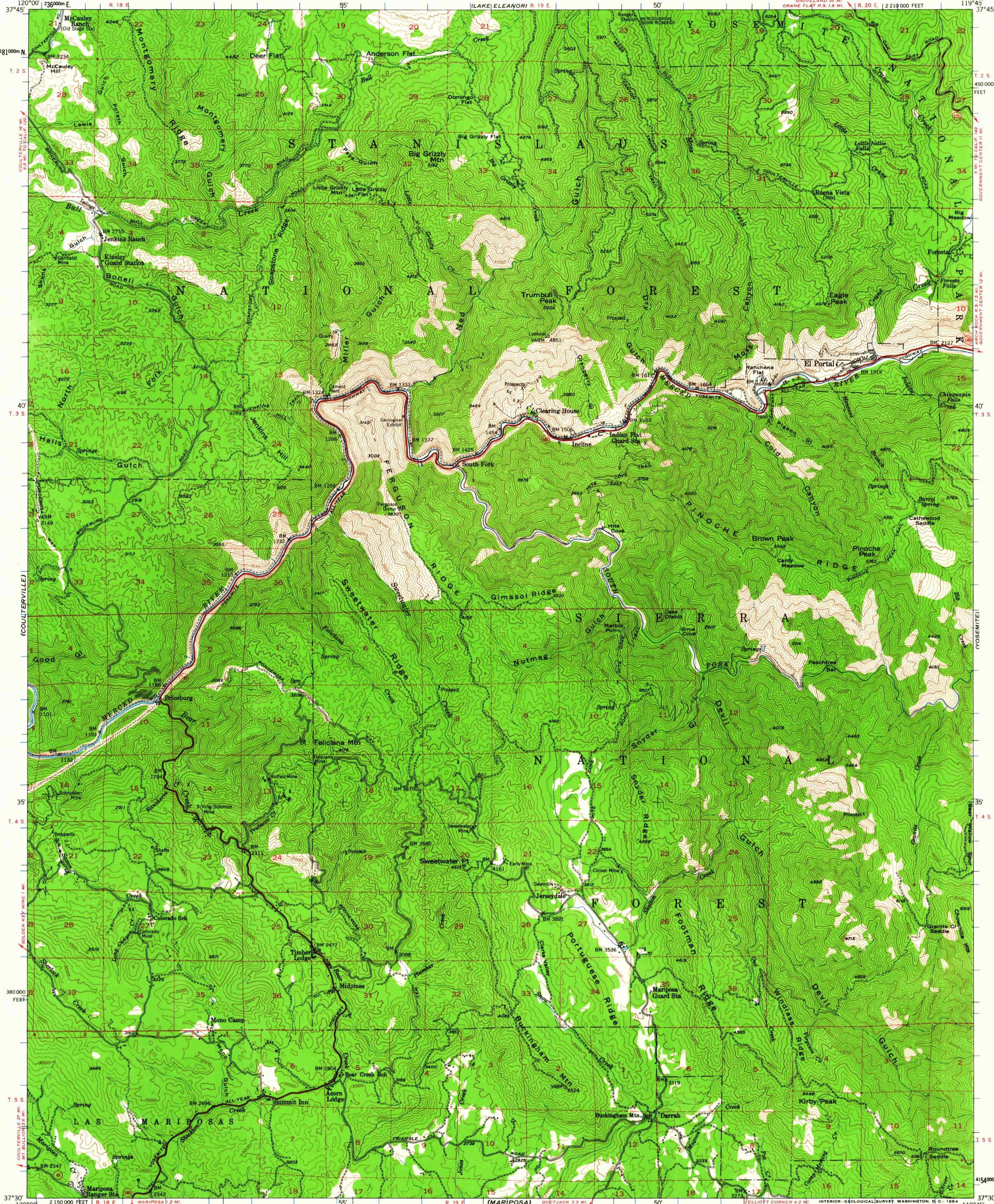
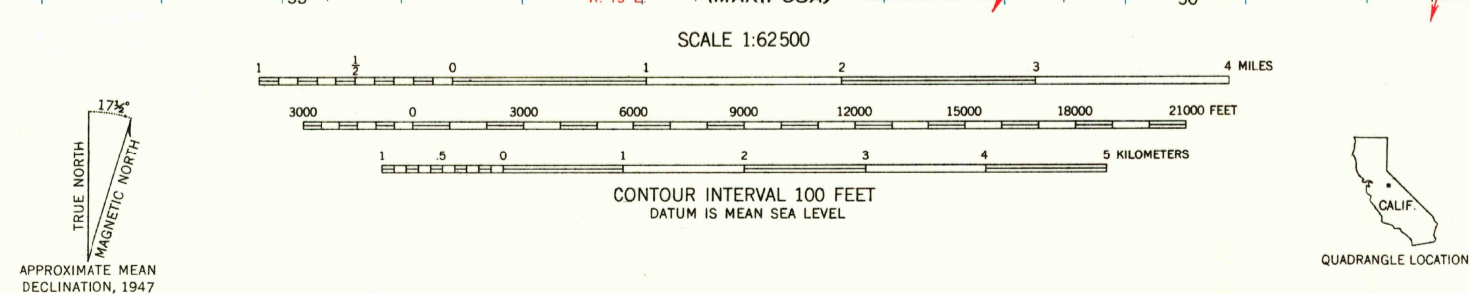


UNITED STATES
DEPARTMENT OF THE INTERIOR
GEOLOGICAL SURVEY

EL PORTAL QUADRANGLE
CALIFORNIA-MARIPOSA CO.
15 MINUTE SERIES (TOPOGRAPHIC)



Mapped, edited, and published by the Geological Survey
Control by USGS and USC&GS
Topography from aerial photographs by multiplex methods
Aerial photographs taken 1945. Field check 1947
Polyconic projection. 1927 North American datum
10,000-foot grid based on California coordinate system, zone 3
Certain land lines are omitted because of insufficient data
Dashed land lines indicate approximate locations
1000-meter Universal Transverse Mercator grid ticks,
zone 11, shown in blue



ROAD CLASSIFICATION
1964
Heavy-duty ——— Light-duty ———
Medium-duty ——— Unimproved dirt ———
○ Slate Route
This area is also covered by 1:24,000 scale maps of
El Portal, Kinsley, Feliciano Mtn., and Buckingham Mtn.
7.5 minute quadrangles
EL PORTAL, CALIF.
N3730-W11945/15
1947

THIS MAP COMPLIES WITH NATIONAL MAP ACCURACY STANDARDS
FOR SALE BY U. S. GEOLOGICAL SURVEY, DENVER 25, COLORADO OR WASHINGTON 25, D. C.
A FOLDER DESCRIBING TOPOGRAPHIC MAPS AND SYMBOLS IS AVAILABLE ON REQUEST

USGS
Historical File
Topographic Division
HISTORICAL
NOV 26 1963
3115