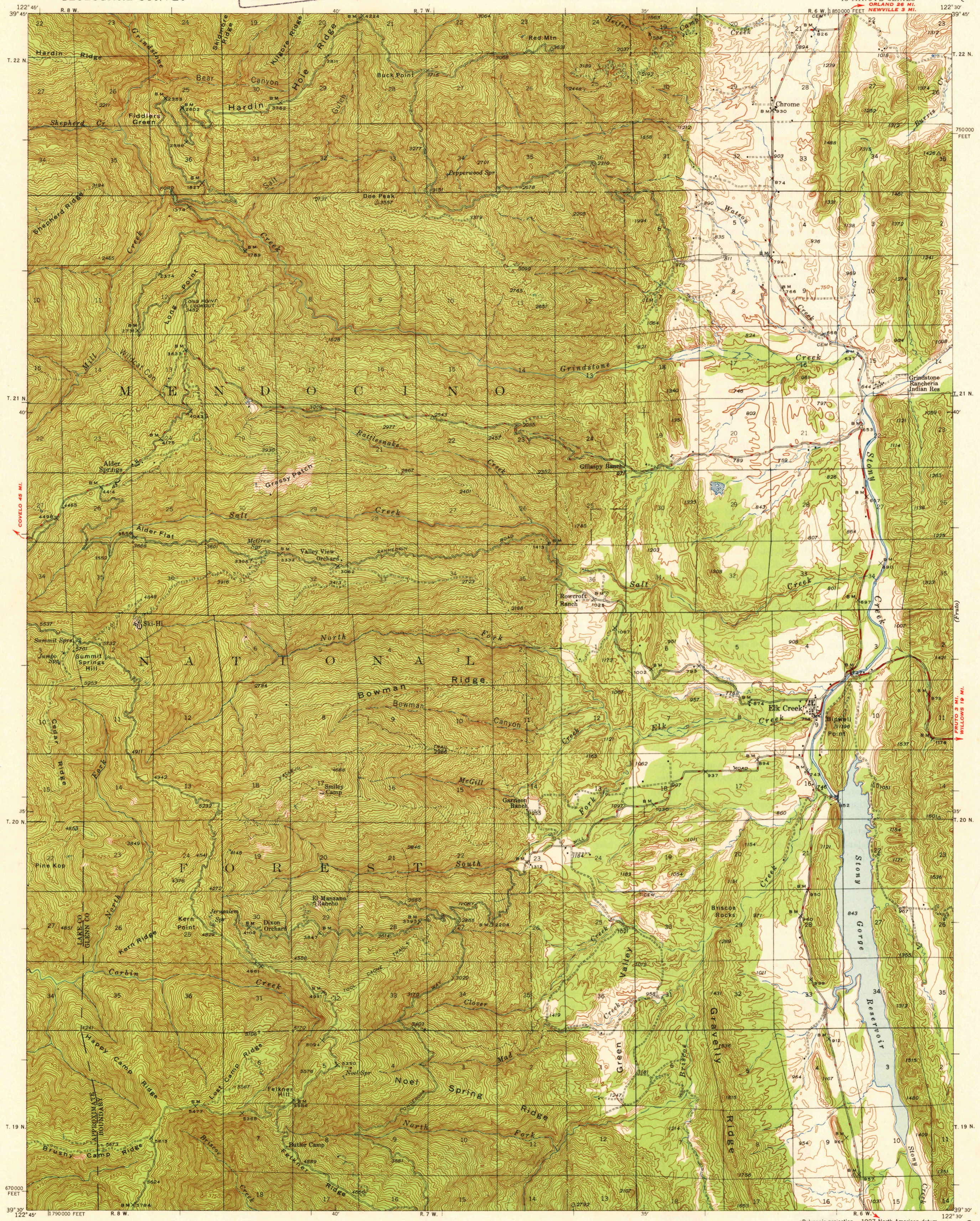
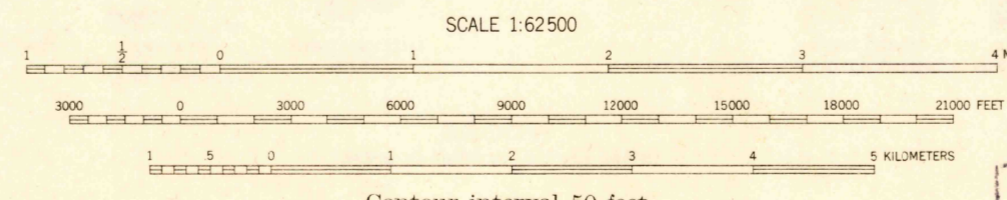


U. S. G. S.
FILE COPY
Inspection and Editing.



Mapped by the Geological Survey
1945

ROAD CLASSIFICATION
1947
Dependable hard surface
Heavy-duty road
Secondary hard surface
All-weather road
Dry weather roads
Loose-surface graded
Unsurfaced, graded
Dirt road
U. S. Route 15
State Route 26
More than two lanes indicated along road with tick at point of change
APPROXIMATE MEAN DECLINATION, 1945



Contour interval 50 feet
Datum is mean sea level
THIS MAP COMPLIES WITH NATIONAL MAP ACCURACY STANDARDS
FOR SALE BY U. S. GEOLOGICAL SURVEY, WASHINGTON 25, D. C.

Polycyclic projection. 1927 North American datum
10000 foot grid based on California (2)
rectangular coordinate system
Certain section lines in T. 21 N., R. 7 W. and R. 8 W. and
T. 19 N., R. 8 W. are omitted because land lines
and topography cannot be reconciled
STONYFORD 10.5 MI.
WILLIAMS 46 MI.

USGS
Historical File
U. S. Topographic Division
FILE COPY
Inspection and Editing.

ELK CREEK, CALIF.
Edition of 1948
N 3930-W 12230/15

HISTORICAL