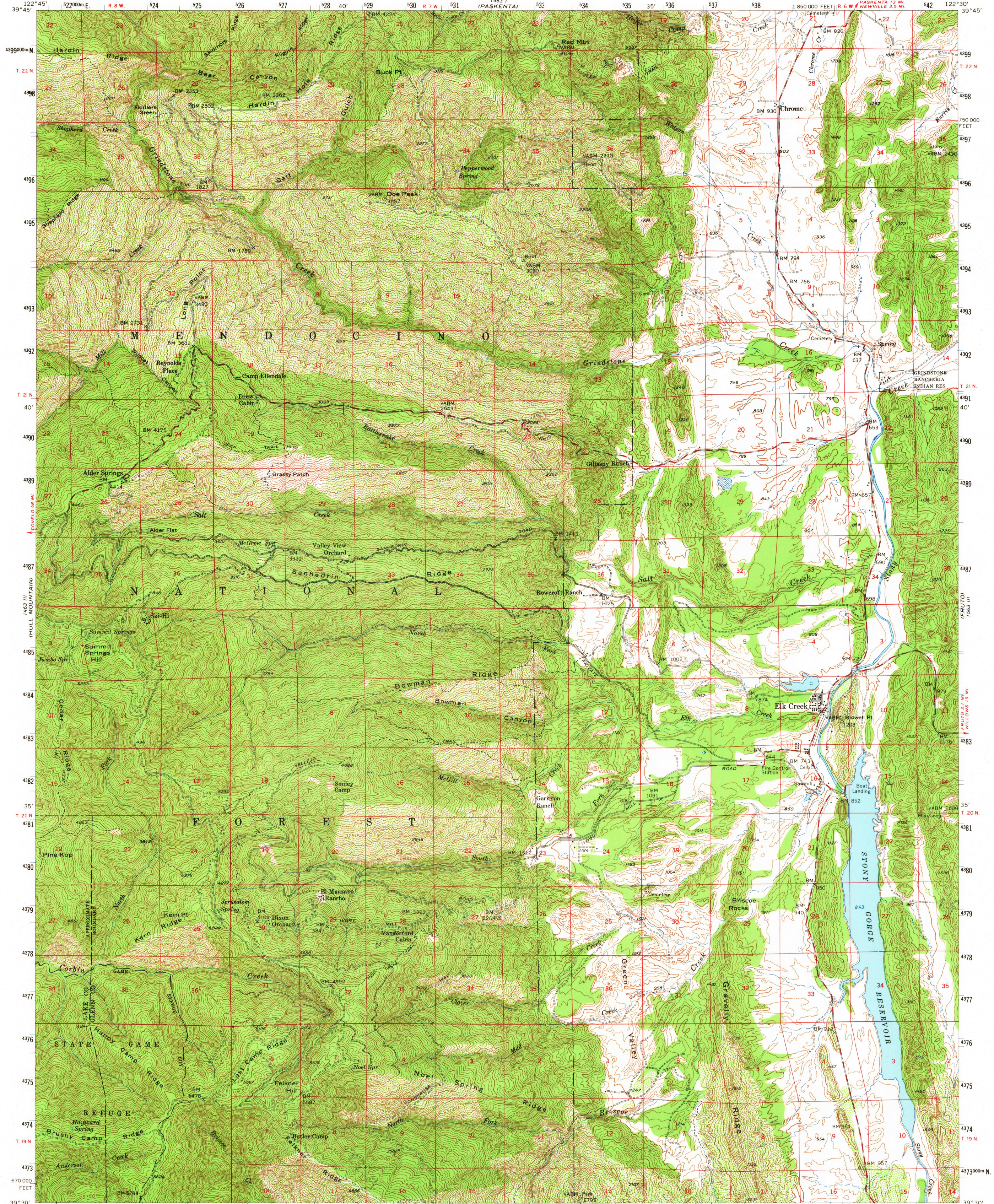
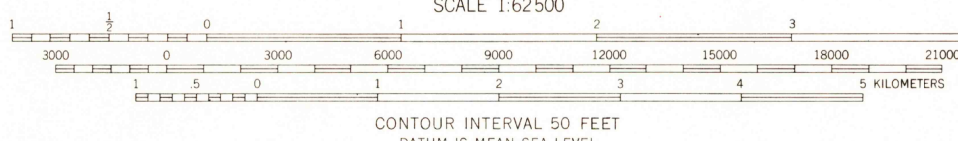
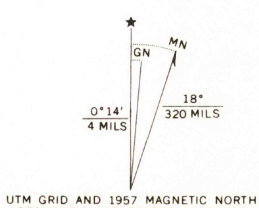


UNITED STATES
DEPARTMENT OF THE INTERIOR
GEOLOGICAL SURVEY

ELK CREEK QUADRANGLE
CALIFORNIA
15 MINUTE SERIES (TOPOGRAPHIC)



Mapped, edited, and published by the Geological Survey
Control by USGS, USC&GS, and USFS
Topography from aerial photographs by Mahan plottor and
by planetable surveys 1945. Culture revised 1957
Polyconic projection. 1927 North American datum
10,000-foot grid based on California coordinate system,
zone 2
1000-meter Universal Transverse Mercator grid ticks,
zone 10, shown in blue
Certain land lines are omitted because of insufficient data



CONTOUR INTERVAL 50 FEET
DATUM IS MEAN SEA LEVEL

USGS
Historical File
Topographic Division

ROAD CLASSIFICATION
Medium duty ——— Light duty ———
Unimproved dirt - - - - -

FOR SALE BY U. S. GEOLOGICAL SURVEY, DENVER, COLORADO 80225 OR WASHINGTON, D. C. 20242
A FOLDER DESCRIBING TOPOGRAPHIC MAPS AND SYMBOLS IS AVAILABLE ON REQUEST



U.S.G.S.

ELK CREEK, CALIF.
T. 19N - W. 12E

FILE COPY
TOPOGRAPHIC DIVISION

1957
AMS 1463 II - SERIES V795

6080
JAN 21 1957
HISTORICAL