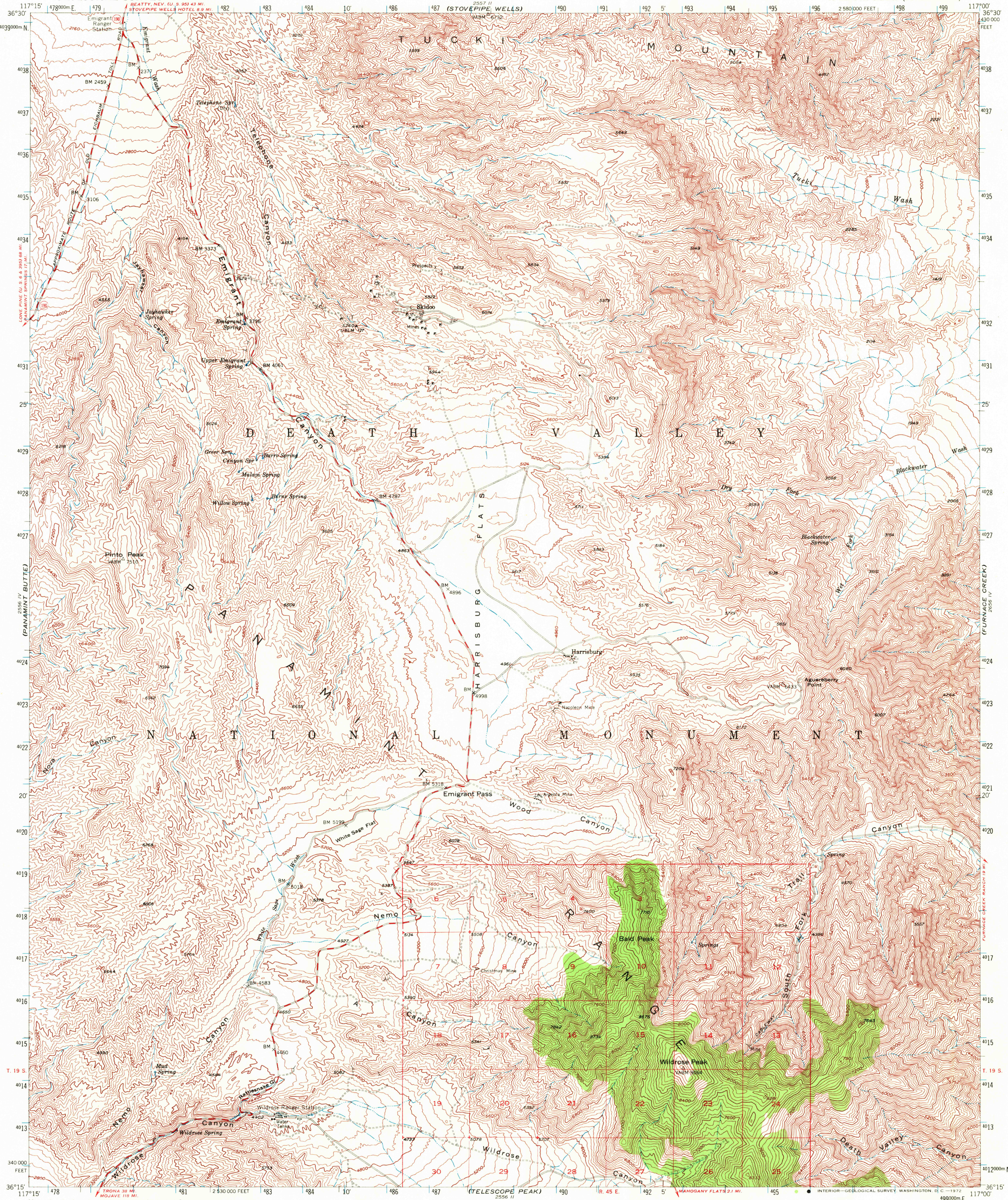
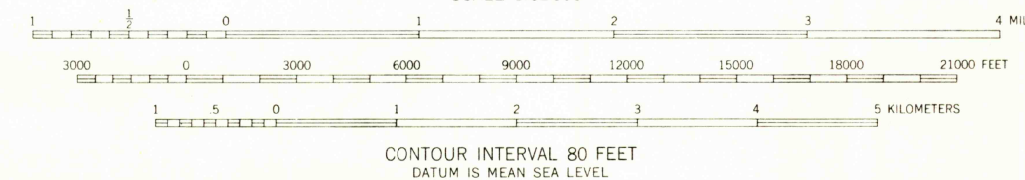
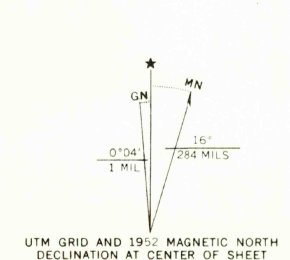


UNITED STATES
DEPARTMENT OF THE INTERIOR
GEOLOGICAL SURVEY

EMIGRANT CANYON QUADRANGLE
CALIFORNIA-INYO CO.
15 MINUTE SERIES (TOPOGRAPHIC)



Mapped, edited, and published by the Geological Survey
Control by USGS and USC&GS
Topography from aerial photographs by multiplex methods
Aerial photographs taken 1948. Field check 1952
Polyconic projection, 1927 North American datum
10,000-foot grid based on California coordinate system, zone 4
Unchecked elevations are shown in brown
1000-meter Universal Transverse Mercator grid ticks,
zone 11, shown in blue



CONTOUR INTERVAL 80 FEET
DATUM IS MEAN SEA LEVEL

THIS MAP COMPLIES WITH NATIONAL MAP ACCURACY STANDARDS
FOR SALE BY U. S. GEOLOGICAL SURVEY, DENVER, COLORADO 80225 OR WASHINGTON, D. C. 20242
A FOLDER DESCRIBING TOPOGRAPHIC MAPS AND SYMBOLS IS AVAILABLE ON REQUEST

ROAD CLASSIFICATION
Heavy-duty 4 LANE 6 LANE Light-duty
Medium-duty 2 LANE 6 LANE Unimproved dirt
U. S. Route State Route



USGS
HISTORICAL FILE
TOPOGRAPHIC DIVISION

EMIGRANT CANYON, CALIF.
N3615-W11700/15
1952

AMS 2556 I-SERIES V795

JAN 7 1972

(MARBLE CANYON)

(CHLORIDE CLIFF)

(MATORAIGO PEAK)

(BENNETTS WELL)