

(MID HILLS)  
(Temp Name)

CALIFORNIA 1:62,500  
N 3445-W11500/15

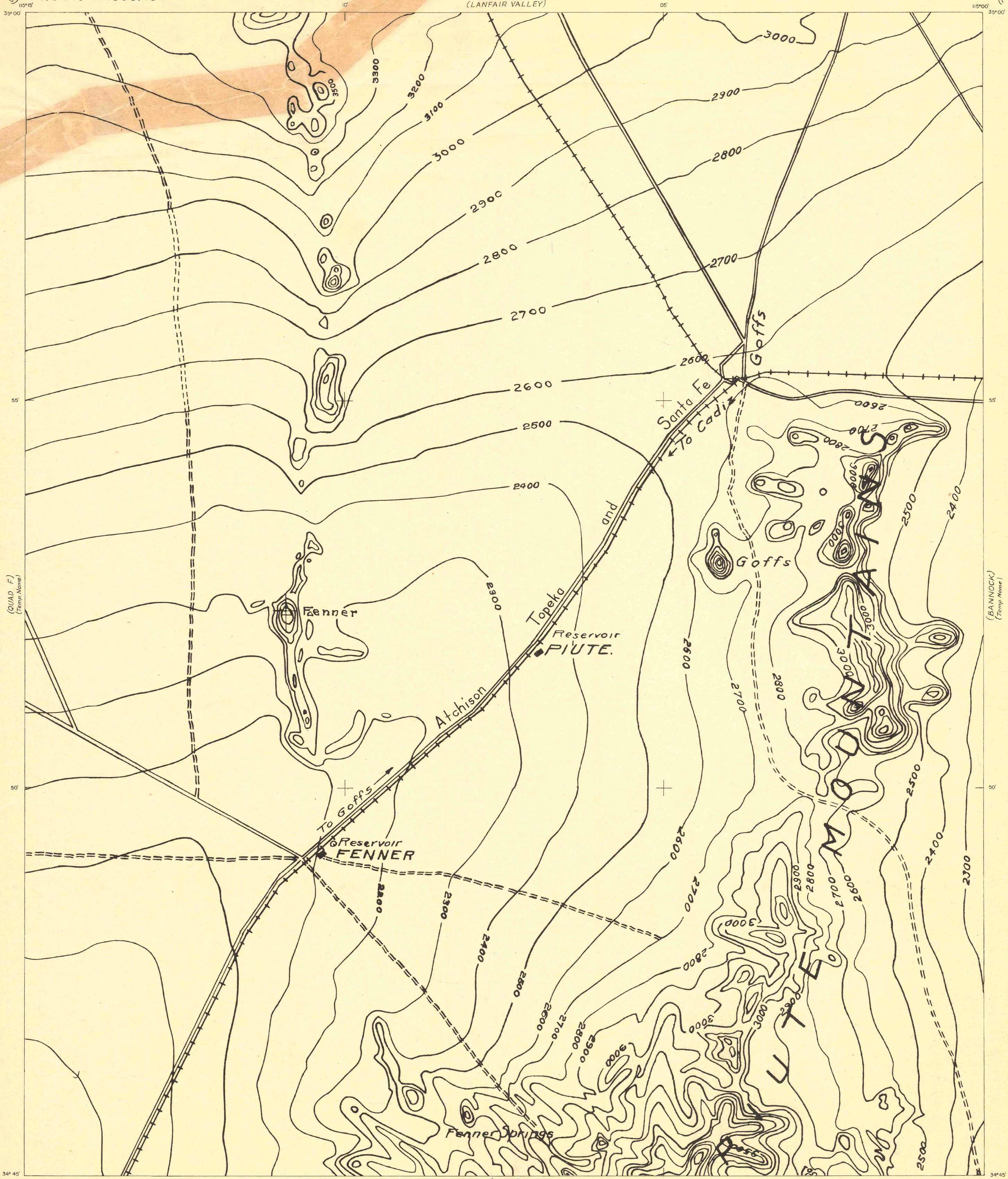
**RESTRICTED**

WAR DEPARTMENT  
CORPS OF ENGINEERS, U. S. ARMY

PROVISIONAL MAP  
FIRST EDITION-651 ENGR. I

CALIFORNIA  
FENNER QUADRANGLE

(QUAD E)  
(Temp Name)



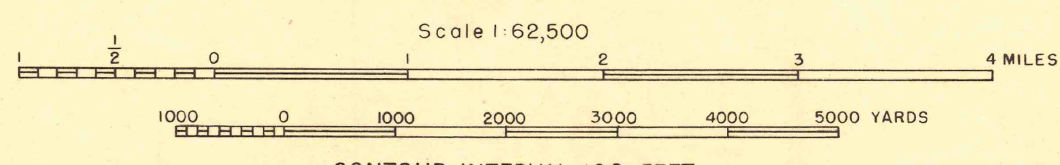
(QUAD F)  
(Temp Name)

(BAINNOCK)  
(Temp Name)

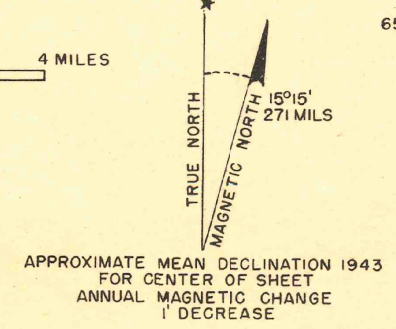
(DARBY)

651 ENGR. V791  
First Edition 1943

Prepared under the direction of the Commanding General, California-Arizona Maneuver Area, by The 651st Engineer Topographic Battalion, U. S. Army, 1943. Topography by photographic enlargement from Maps of Metropolitan Water District, 1:120,000, Sheets 67 and 68, 1929. Polyconic Projection, North American Datum, 1927.



NOTE: OFFICERS USING THIS MAP WILL MARK HEREON CORRECTIONS AND ADDITIONS WHICH COME TO THEIR ATTENTION AND MAIL DIRECT TO THE CHIEF OF ENGINEERS, WASHINGTON D. C.



651ST ENGINEER TOPOGRAPHIC BATTALION U. S. ARMY 1943

(CENTER HILLS)  
(Temp Name)

121962

**RESTRICTED**

FENNER, CALIFORNIA  
N 3445-W11500/15