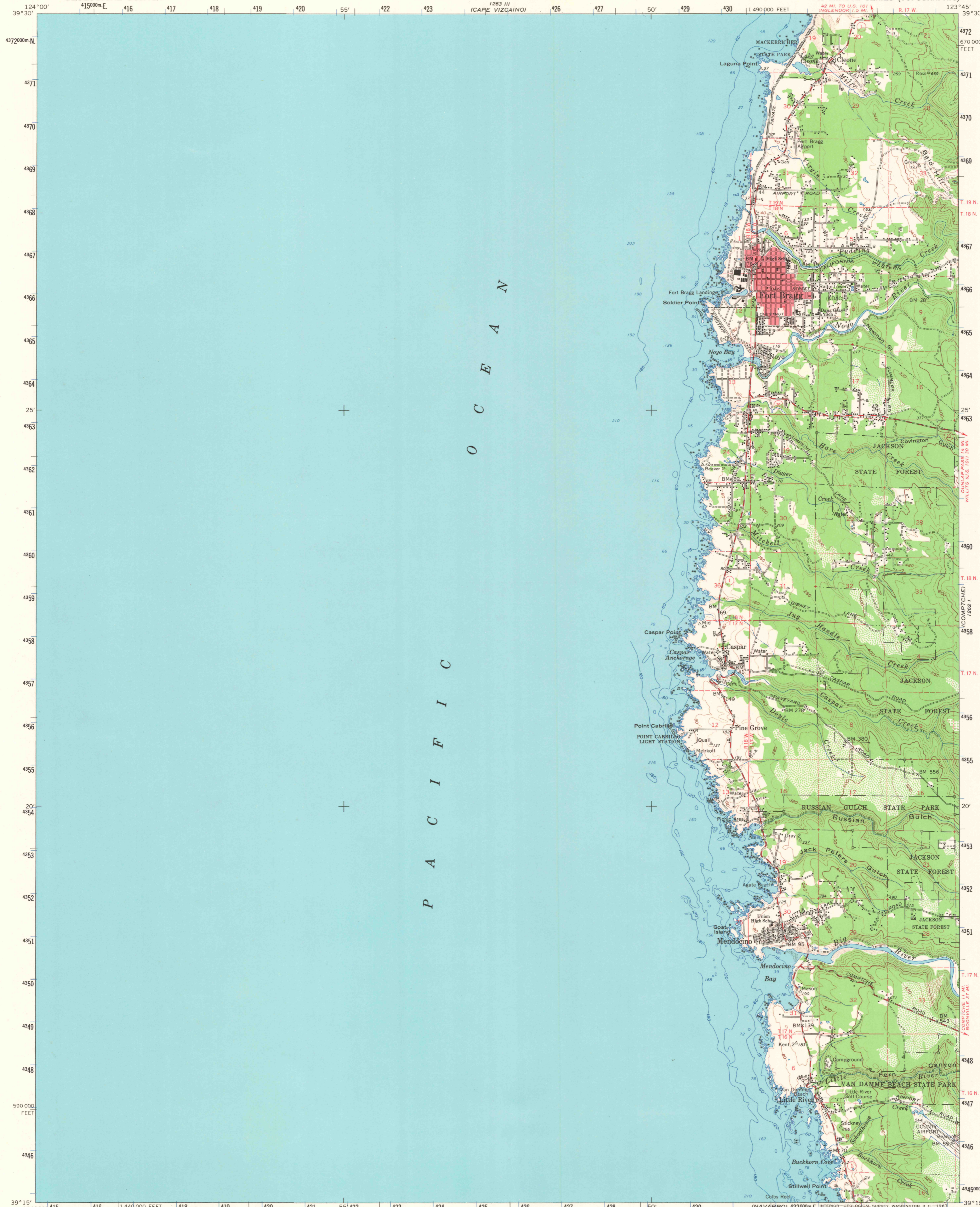
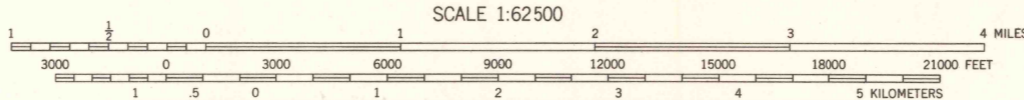
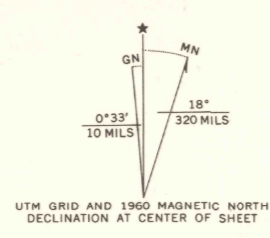


1263 II
(BRANSCOMB)



Mapped, edited and published by the Geological Survey
Control by USGS, USC&GS, and USCE
Compiled in 1961 from 1:24,000-scale maps dated 1960
Selected hydrographic data compiled from
USC&GS Charts 5703 (1957) and 5711 (1958)
This information is not intended for navigational purposes
Polyconic projection. 1927 North American datum
10,000-foot grid based on California coordinate system, zone 2
1000-meter Universal Transverse Mercator grid ticks,
zone 10, shown in blue
Red tint indicates area in which only landmark buildings are shown



CONTOUR INTERVAL 80 FEET
DOTTED LINES REPRESENT 40-FOOT CONTOURS
DATUM IS MEAN SEA LEVEL
DEPTH CURVES AND SOUNDINGS IN FEET—DATUM IS MEAN LOWER LOW WATER
SHORELINE SHOWN REPRESENTS THE APPROXIMATE LINE OF MEAN HIGH WATER
THE MEAN RANGE OF TIDE IS APPROXIMATELY 4 FEET



ROAD CLASSIFICATION
Medium-duty ——— Light-duty ———
Unimproved dirt ———
State Route —○—

This area also covered by 7.5 minute, 1:24,000-scale
maps: Fort Bragg 1960 and Mendocino 1960
FORT BRAGG, CALIF.
N3915—W12345/15
1960
AMS 1262 IV—SERIES V795

THIS MAP COMPLIES WITH NATIONAL MAP ACCURACY STANDARDS
FOR SALE BY U. S. GEOLOGICAL SURVEY, DENVER, COLORADO 80225 OR WASHINGTON, D. C. 20242
A FOLDER DESCRIBING TOPOGRAPHIC MAPS AND SYMBOLS IS AVAILABLE ON REQUEST