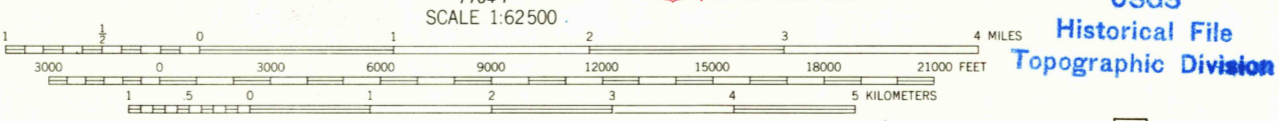
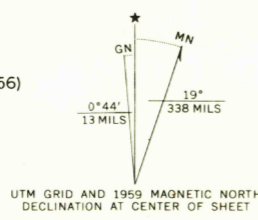


Maped, edited, and published by the Geological Survey
Control by USGS, USC&GS, USCE, and State of California
Topography from aerial photographs by photogrammetric methods
and by planetable surveys 1959. Aerial photographs taken 1956
Selected hydrographic data compiled from USC&GS Chart 5832 (1956)
This information is not intended for navigational purposes
Polyconic projection. 1927 North American datum
10,000-foot grid based on California coordinate system, zone 1
1000-meter Universal Transverse Mercator grid ticks,
zone 10, shown in blue
Red tint indicates areas in which only landmark buildings are shown
Dashed land lines indicate approximate locations
Land lines unsurveyed in parts of Ts. 2 and 3 N.-R. 1 W.



CONTOUR INTERVAL 80 FEET
DOTTED LINES REPRESENT 20-FOOT CONTOURS
DATUM IS MEAN SEA LEVEL
DEPTH CURVES IN FEET-DATUM IS MEAN LOWER LOW WATER
SHORELINE SHOWN REPRESENTS THE APPROXIMATE LINE OF MEAN HIGH WATER
THE MEAN RANGE OF TIDE IS APPROXIMATELY 4 FEET

USGS
Historical File
Topographic Division
ROAD CLASSIFICATION
Heavy-duty — Light duty
Medium-duty — Unimproved dirt
U.S. Route

U.S.G.S.
FORTUNA, CALIF.
N4030-W12400/15
1959
AMS 1165 II-SERIES V795

FOR SALE BY U.S. GEOLOGICAL SURVEY, DENVER, COLORADO 80225, OR WASHINGTON, D. C. 20242
A FOLDER DESCRIBING TOPOGRAPHIC MAPS AND SYMBOLS IS AVAILABLE ON REQUEST