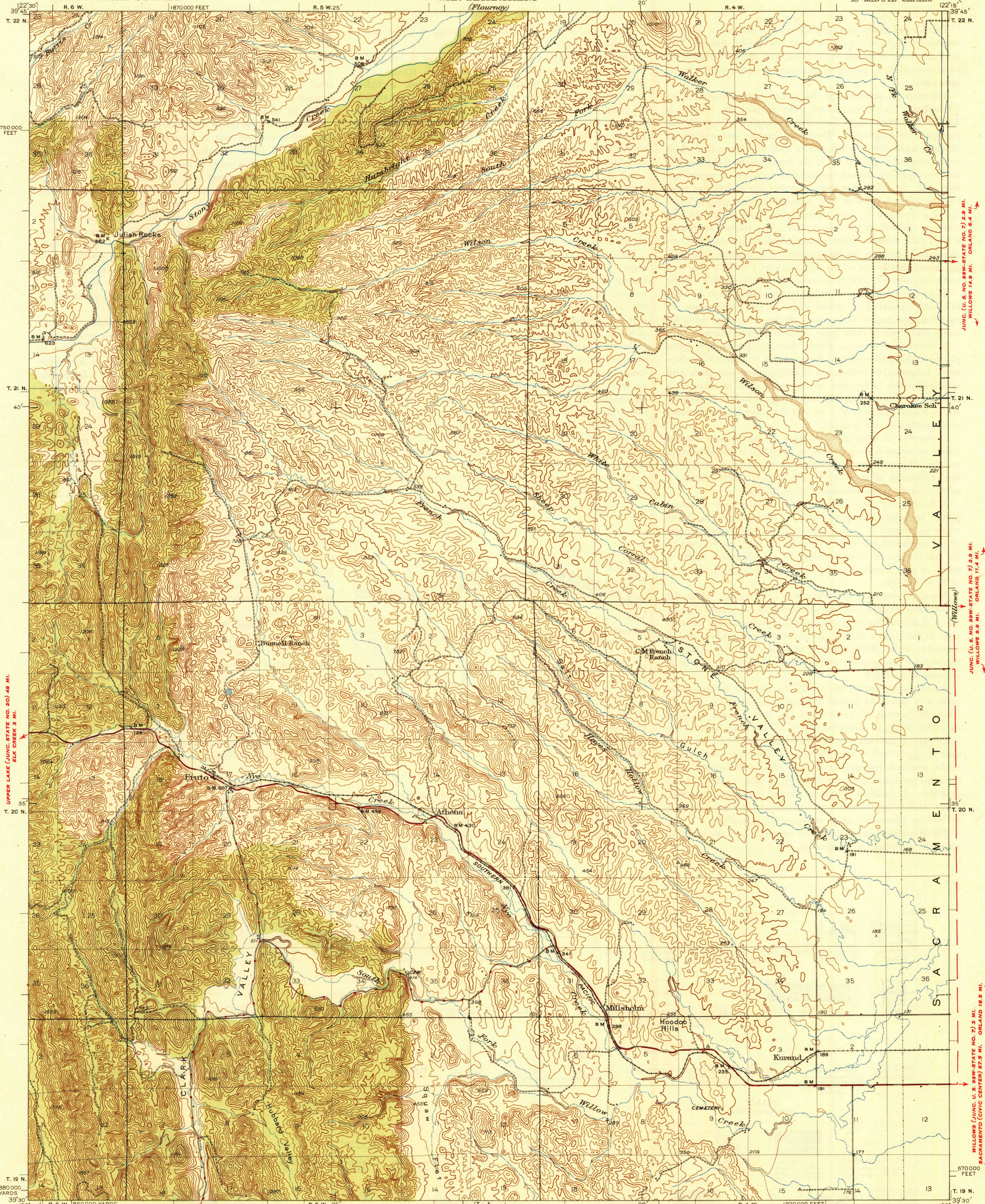


U. S. G. S.
FILE COPY
Inspection and Editing.

UNITED STATES
DEPARTMENT OF THE INTERIOR
GEOLOGICAL SURVEY

WAR DEPARTMENT
(Flournoy)

CALIFORNIA
(GLENN COUNTY)
FRUTO QUADRANGLE
15-MINUTE SERIES



UPPER LAKE (JUNC. STATE NO. 20) 4.9 MI.
ELK CREEK 3 MI.

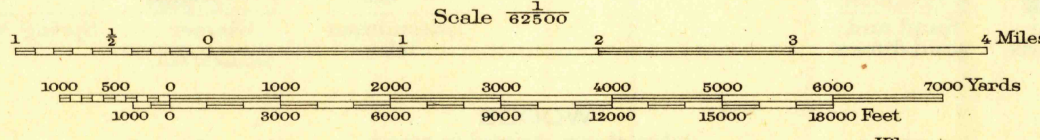
JUNC. (U. S. NO. 89W-STATE NO. 7) 2.9 MI.
WILLOWS 14.9 MI. ORLAND 6.4 MI.

JUNC. (U. S. NO. 89W-STATE NO. 7) 2.9 MI.
WILLOWS 9.9 MI. ORLAND 11.4 MI.

WILLOWS (JUNC. U. S. 89W-STATE NO. 7) 3 MI.
SACRAMENTO (CIVIC CENTER) 87.5 MI. ORLAND 18.5 MI.

Topography by F.H. Purdy, J.G. Collins, C.R. Strang, S.R. Poor, and H.B. Tyler. Surveyed in 1941-1942.

STONFORD 13.4 MI.
WILLIAMS (JUNC. U. S. 89W) 47.2 MI.



Contour interval 50 feet
Datum is mean sea level

Maps of the Walker Creek and Kurand quadrangles, scale 1:31,680, contour interval 5 feet, from more detailed surveys of the Sacramento Valley part of this area, are available.

ROAD CLASSIFICATION
1944
Dependable hard-surface road
heavy-duty road
Secondary hard-surface road
all-weather road
Dirt road
Loose-surface, graded
Unsurfaced, graded
dry weather roads
Dotted line
U. S. Route
State Route

Polyconic projection. 1927 North American datum
5000 yard grid based on U.S. zone system, G
10000 foot grid based on California (2)
rectangular coordinate system
To join Willows map use dotted projection corners

U. S. G. S.
FILE COPY
Inspection and Editing.

USGS
Historical File
Topographic Division

FRUTO, CALIF.
Edition of 1944
N3930-W12215/15

SEP 20 1944

5810