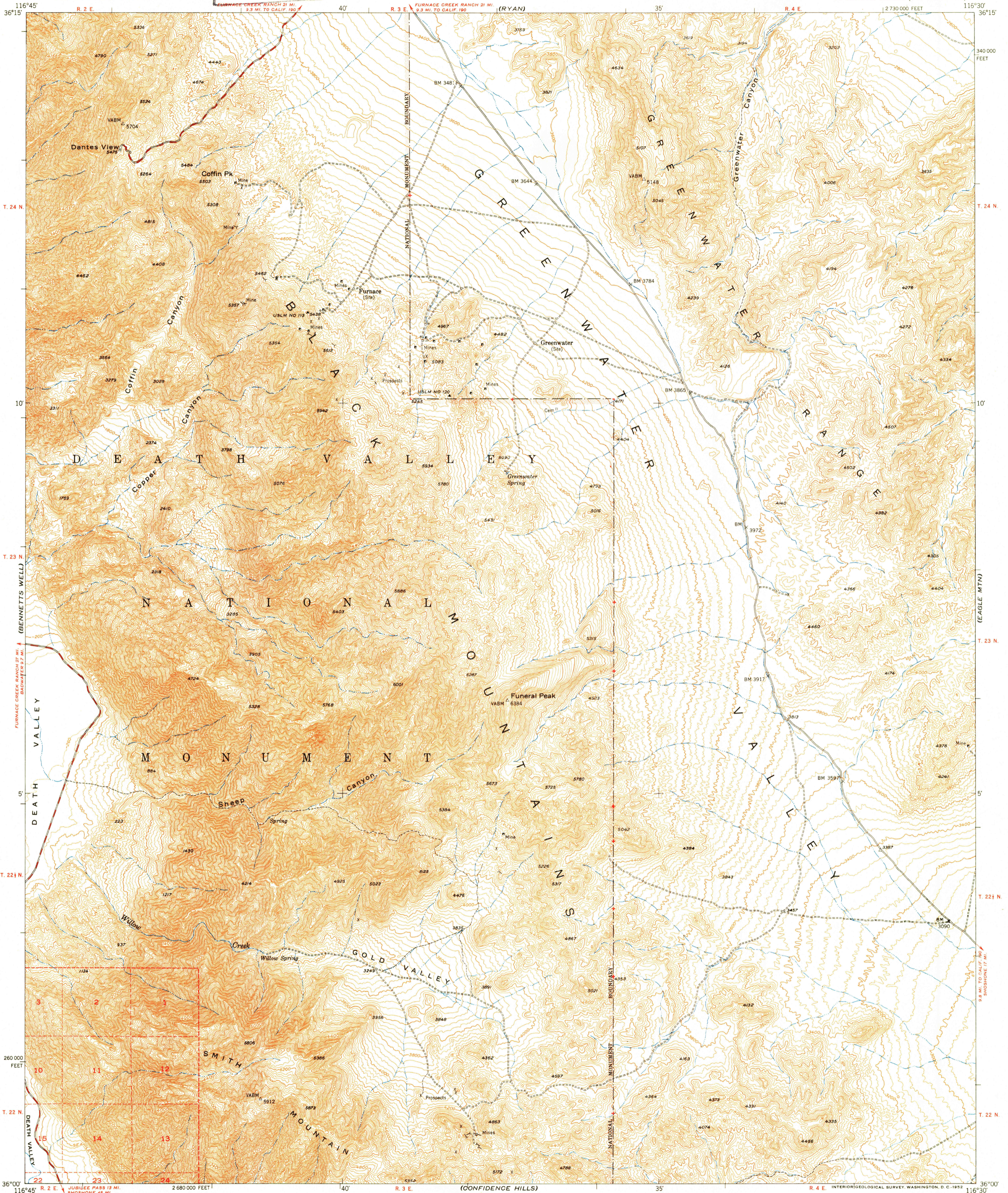
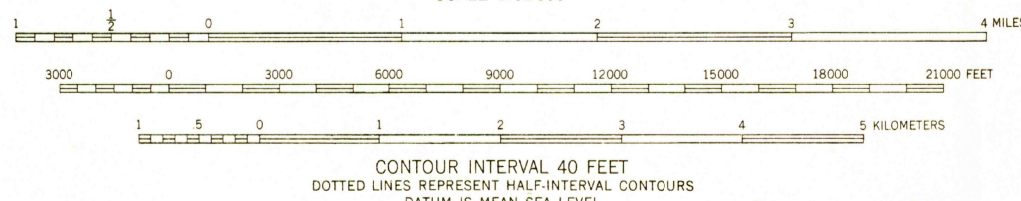
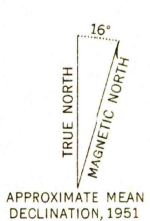


U.S.G.S.
FILE COPY
Inspection and Mapping



Maped, edited, and published by the Geological Survey
Control by USGS and USC&GS
Topography from aerial photographs by multiplex methods
Aerial photographs taken 1948. Field check 1951
Polyconic projection. 1927 North American datum
10,000-foot grid based on California coordinate system, zone 4
Dashed land lines indicate approximate locations
Unchecked elevations are shown in brown



ROAD CLASSIFICATION

Heavy-duty	4 LANE, 6 LANE	Light-duty	2 LANE, 4 LANE
Medium-duty	4 LANE, 6 LANE	Unimproved dirt	---
U. S. Route	○	State Route	○

USGS
Historical File
Topographic Division
U.S.G.S.
FILE COPY
Inspection and Mapping

FUNERAL PEAK, CALIF.
N3600-W11630/15

1951
SEP 10 1952

THIS MAP COMPLIES WITH NATIONAL MAP ACCURACY STANDARDS
FOR SALE BY U. S. GEOLOGICAL SURVEY, FEDERAL CENTER, DENVER, COLORADO OR WASHINGTON 25, D. C.
A FOLDER DESCRIBING TOPOGRAPHIC MAPS AND SYMBOLS IS AVAILABLE ON REQUEST

2035