

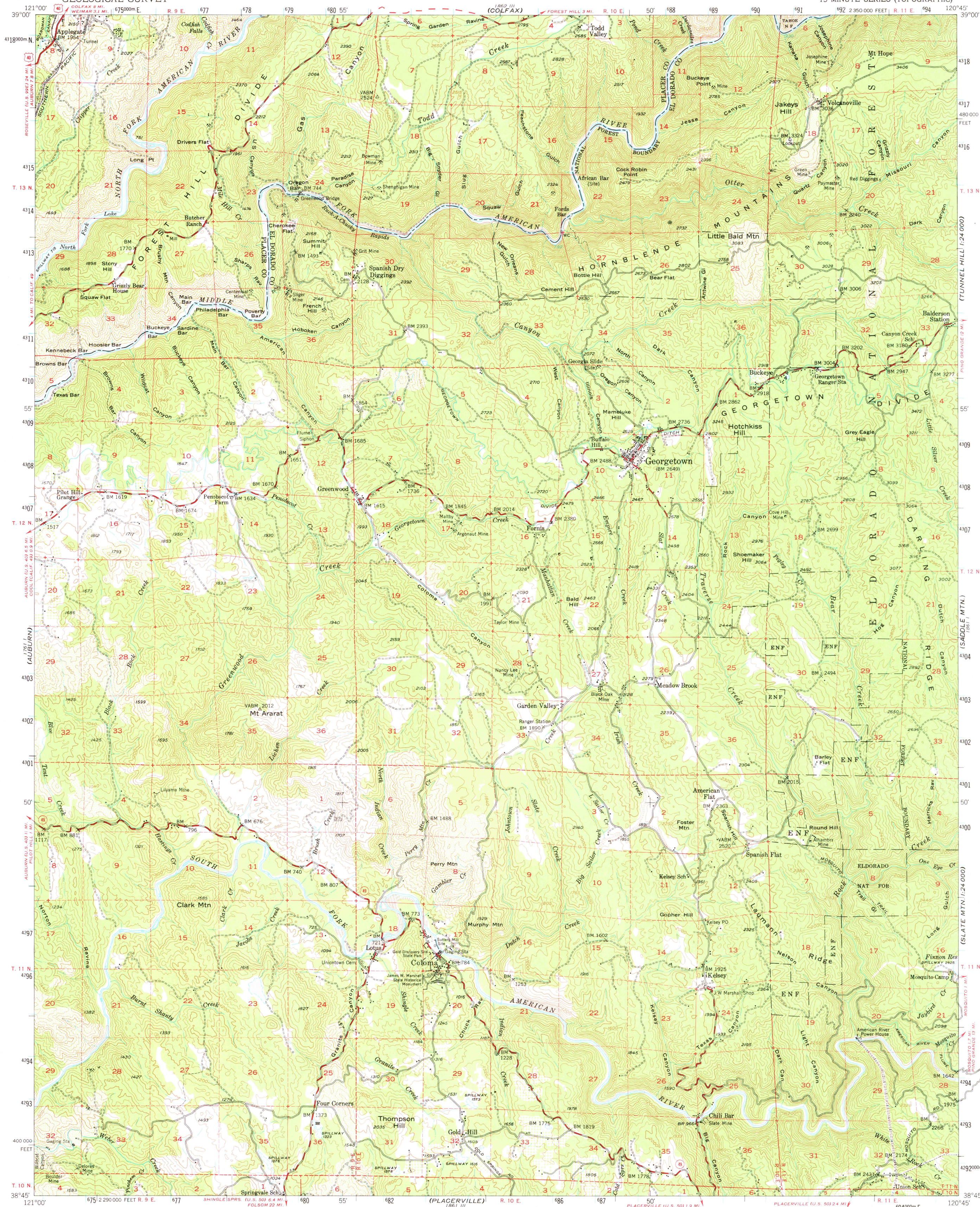
GRASS VALLEY

UNITED STATES
DEPARTMENT OF THE INTERIOR
GEOLOGICAL SURVEY

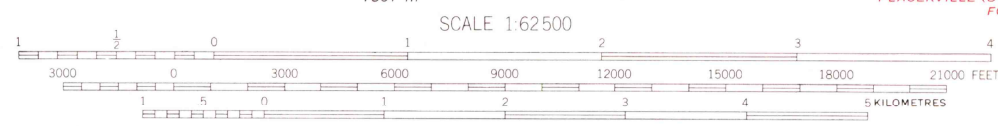
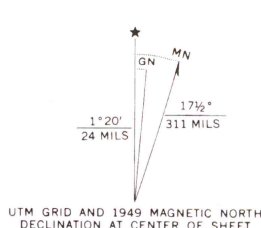
STATE OF CALIFORNIA
REPRESENTED BY THE
DIRECTOR OF PUBLIC WORKS

GEORGETOWN QUADRANGLE
CALIFORNIA
15 MINUTE SERIES (TOPOGRAPHIC)

IRON PEAK

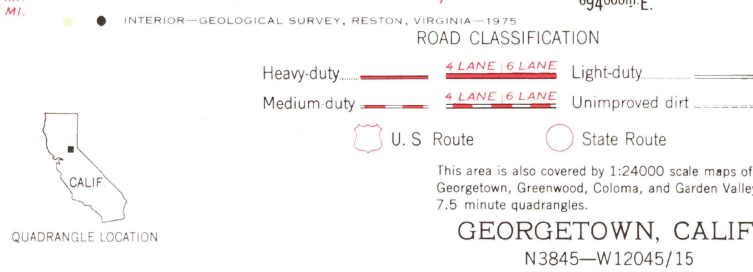


Maped, edited, and published by the Geological Survey
Control by USGS and USC&GS
Topography from aerial photographs by multiplex methods
Aerial photographs taken 1946. Field check 1949
Polyconic projection. 1927 North American datum
10,000-foot grid based on California coordinate system, zone 2
Dashed land lines indicate approximate locations
Unchecked elevations are shown in brown
1000-metre Universal Transverse Mercator grid ticks,
zone 10, shown in blue



CONTOUR INTERVAL 80 FEET
NATIONAL GEODETIC VERTICAL DATUM OF 1929

THIS MAP COMPLIES WITH NATIONAL MAP ACCURACY STANDARDS
FOR SALE BY U.S. GEOLOGICAL SURVEY, DENVER, COLORADO 80225, OR RESTON, VIRGINIA 22092
A FOLDER DESCRIBING TOPOGRAPHIC MAPS AND SYMBOLS IS AVAILABLE ON REQUEST



GEORGETOWN, CALIF.
N3845-W12045/15

1949
AMS 1861 IV-SERIES V795

USGS
HISTORICAL FILE
TOPOGRAPHIC DIVISION

MAY 20 1975