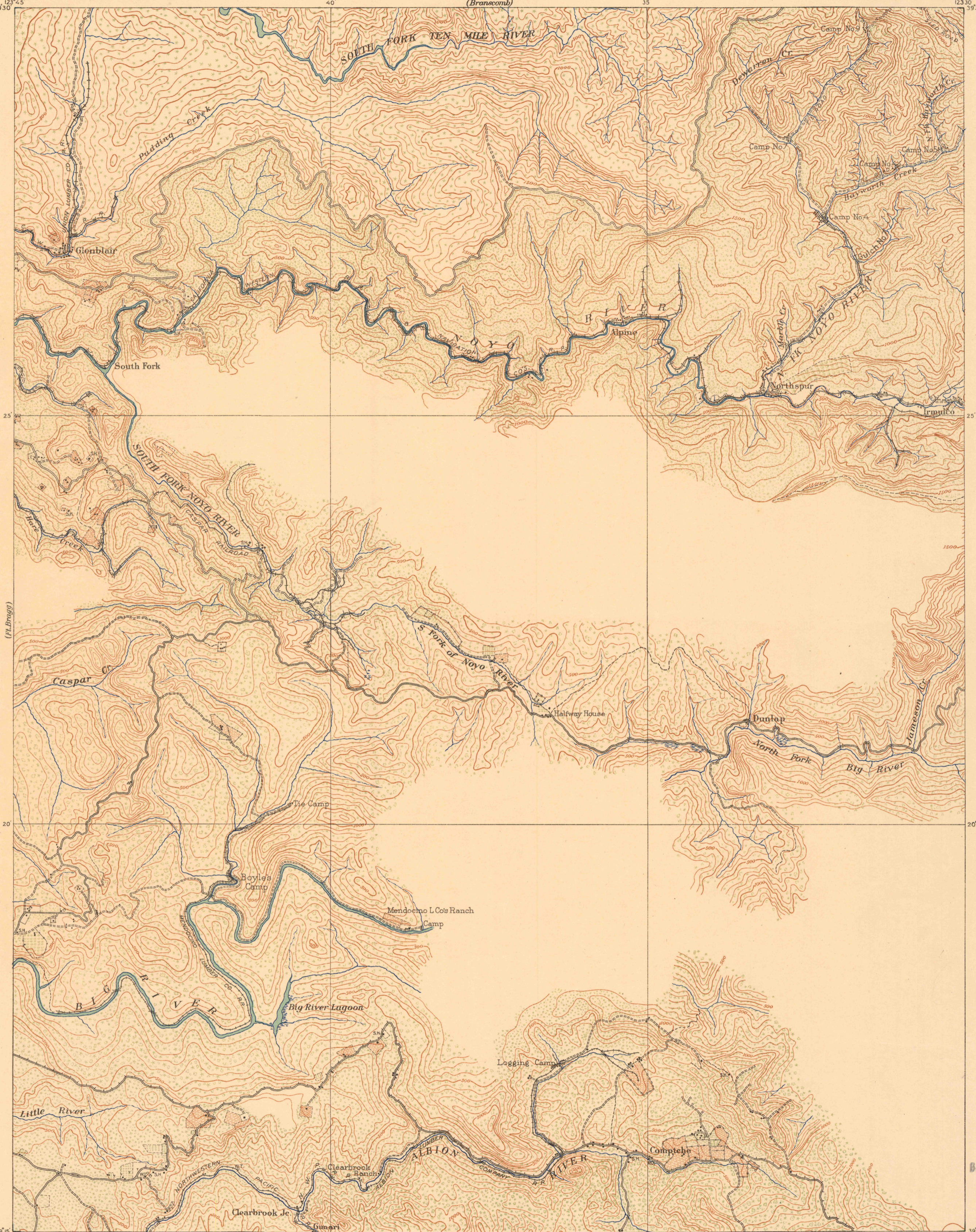


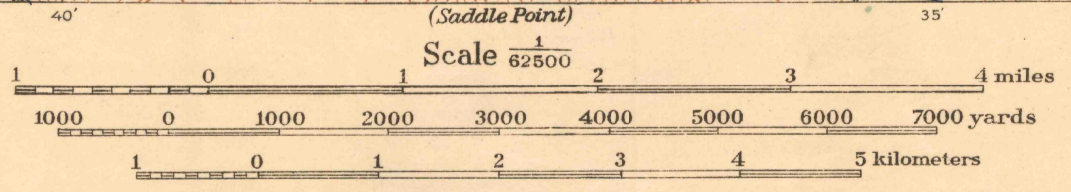
**CONTROLLED
RECONNAISSANCE SHEET
19-S-1-E/2**

CORPS OF ENGINEERS, U. S. ARMY
PROGRESSIVE MILITARY MAP

CALIFORNIA
GLENBLAIR QUADRANGLE

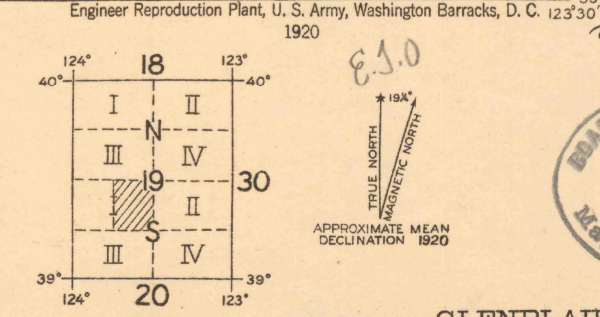


Col. Chas. L. Potter, Corps of Eng'rs, Department Engineer,
Captain R. Park, Corps of Eng'rs, Topographical Inspector,
1st Lieut. D. O. Elliott, Corps of Eng'rs, in charge of party,
1st Lieut. Edw. R. Kimble, Corps of Eng'rs, in charge of party,
Surveyed in 1916.
Control from U.S.C. & G.S. and Co. F. 2nd Eng'rs.



Contour Interval 100 feet
Datum is mean sea level

NOTE: OFFICERS USING THIS MAP WILL MARK HEREON CORRECTIONS AND ADDITIONS WHICH COME TO THEIR ATTENTION AND MAIL DIRECT TO "THE CHIEF OF ENGINEERS, WASHINGTON, D.C."



Board of Surveys & Maps
FILE COPY
Map Information Office

BOARD OF SURVEYS & MAPS
RECEIVED
JUN 18 1921
Map Information Office

GLENBLAIR

CAL