

TOPOGRAPHY

DEPARTMENT OF THE INTERIOR
ALBERT B. FALL, SECRETARY
U.S. GEOLOGICAL SURVEY
GEORGE OTIS SMITH, DIRECTOR

WAR DEPARTMENT
CORPS OF ENGINEERS, U.S. ARMY
R.5 E. 25' (Hollister)

STATE OF CALIFORNIA
WILLIAM D. STEPHENS, GOVERNOR
W.F. MCCLURE, STATE ENGINEER
20'

CALIFORNIA
GONZALES QUADRANGLE
121' 15" 36' 45"

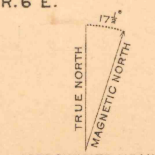
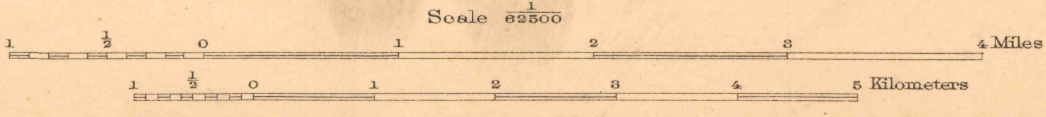


(San Juan)

(Queen Sabo)

ENGRAVED 1920 BY U.S.G.S.
R.B. Marshall, Chief Geographer.
Geo. R. Davis, Geographer in charge.
Topography by R.T. Evans, T.H. Moncre, C.R. Fisher, C.W. Rowell, and E. Dolliver.
Control by C.F. Urquhart, L.F. Biggs, and W.H. Monahan.
Surveyed in 1910 and 1917.

Legend table with symbols for Evans, Fisher, and other features.



Polyconic projection, North American datum.