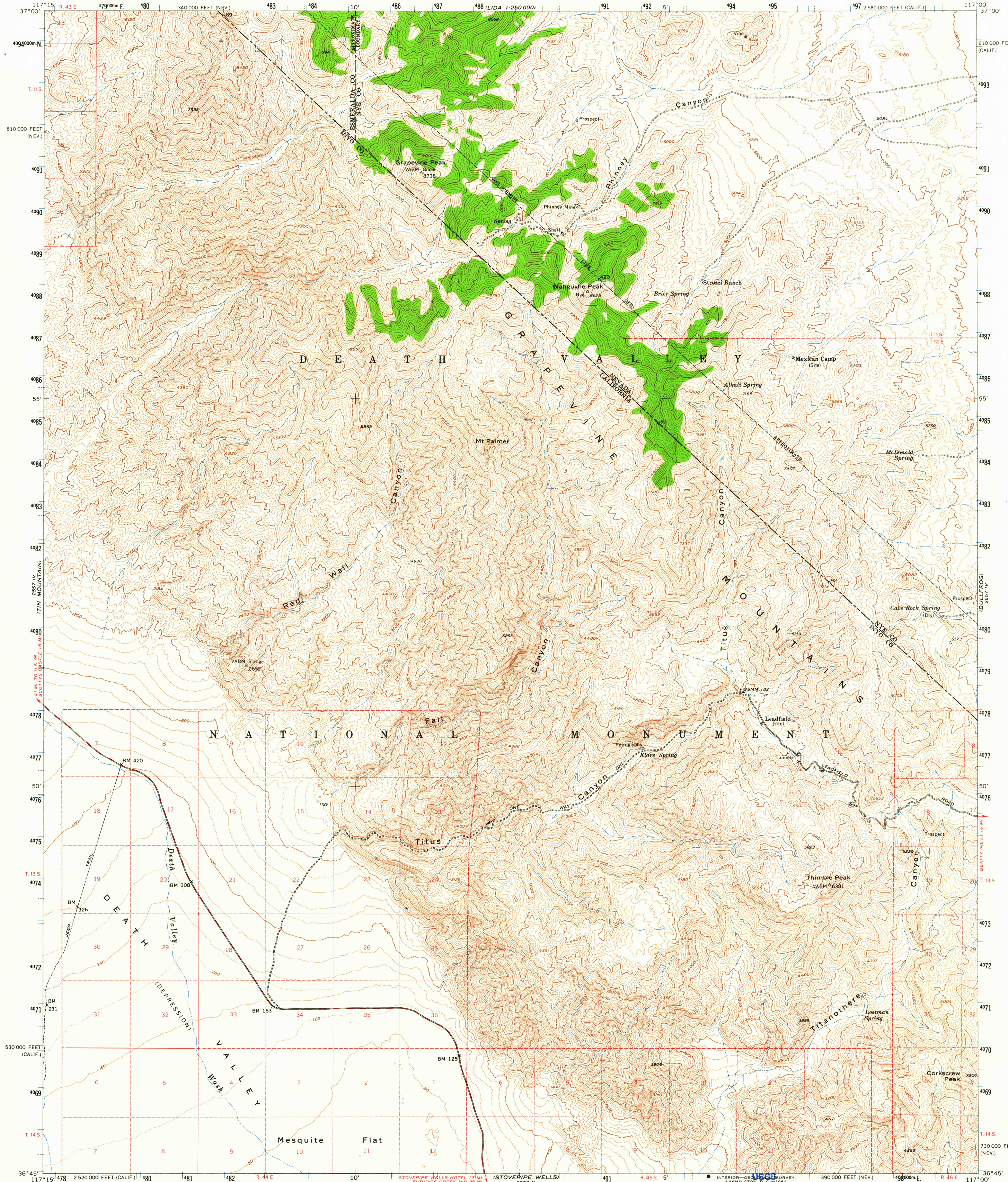


USE THESE COORDINATES  
(USERRA CRATER)

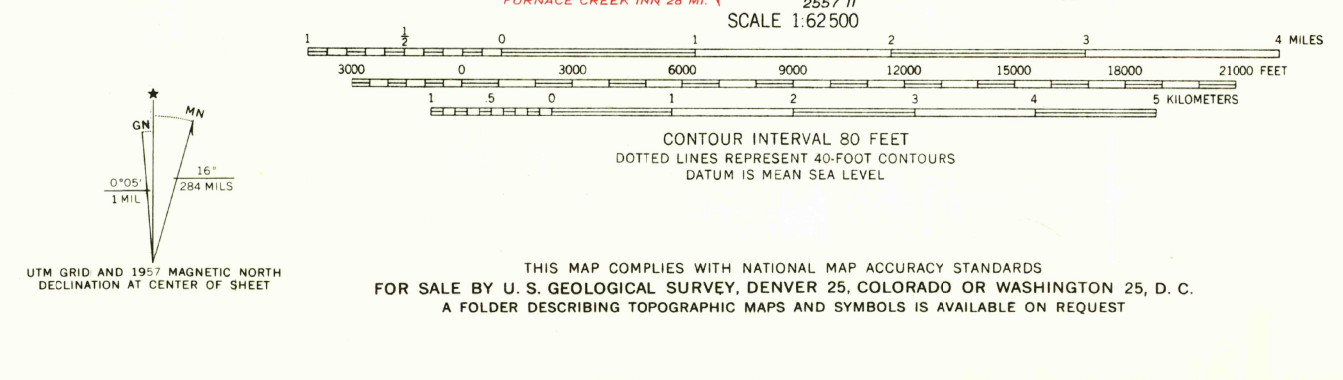
UNITED STATES  
DEPARTMENT OF THE INTERIOR  
GEOLOGICAL SURVEY

STATE OF CALIFORNIA  
EDMUND G. BROWN, GOVERNOR  
HARVEY O. BANKS, DIRECTOR OF WATER RESOURCES

GRAPEVINE PEAK QUADRANGLE  
CALIFORNIA-NEVADA  
15 MINUTE SERIES (TOPOGRAPHIC)



Mapped, edited, and published by the Geological Survey  
Control by USGS and USC&GS  
Topography from aerial photographs by ER-55 plotter  
Aerial photographs taken 1952. Advance field check 1957  
Polyconic projection. 1927 North American datum  
10,000-foot grids based on California coordinate system, zone 4  
and Nevada coordinate system, central zone  
1000-meter Universal Transverse Mercator grid ticks,  
zone 11, shown in blue  
Dashed land lines indicate approximate locations  
Land lines unsurveyed in California in T.12,13, and 14 S.-R.43 and  
45 1/2 E., and in Nevada in T.11 S.-R.44, 45, and 46 E., T.12 S.-  
R.45 and 46 E., and T.13 S.-R.46 E. Land lines omitted in  
California in T.11 S.-R.44 E., T.12 S.-R.44, 45, and 46 E., and  
T.13 S.-R.45 E. because of insufficient data  
Unchecked elevations are shown in brown



Historical File  
Topographic Division  
ROAD CLASSIFICATION  
Medium duty — Light-duty —  
Unimproved dirt —  
AMS 2557 I—SERIES V795  
1957

SEP 2 1 1964  
5858

THIS MAP COMPLIES WITH NATIONAL MAP ACCURACY STANDARDS  
FOR SALE BY U. S. GEOLOGICAL SURVEY, DENVER 25, COLORADO OR WASHINGTON 25, D. C.  
A FOLDER DESCRIBING TOPOGRAPHIC MAPS AND SYMBOLS IS AVAILABLE ON REQUEST