

(GANGOR)

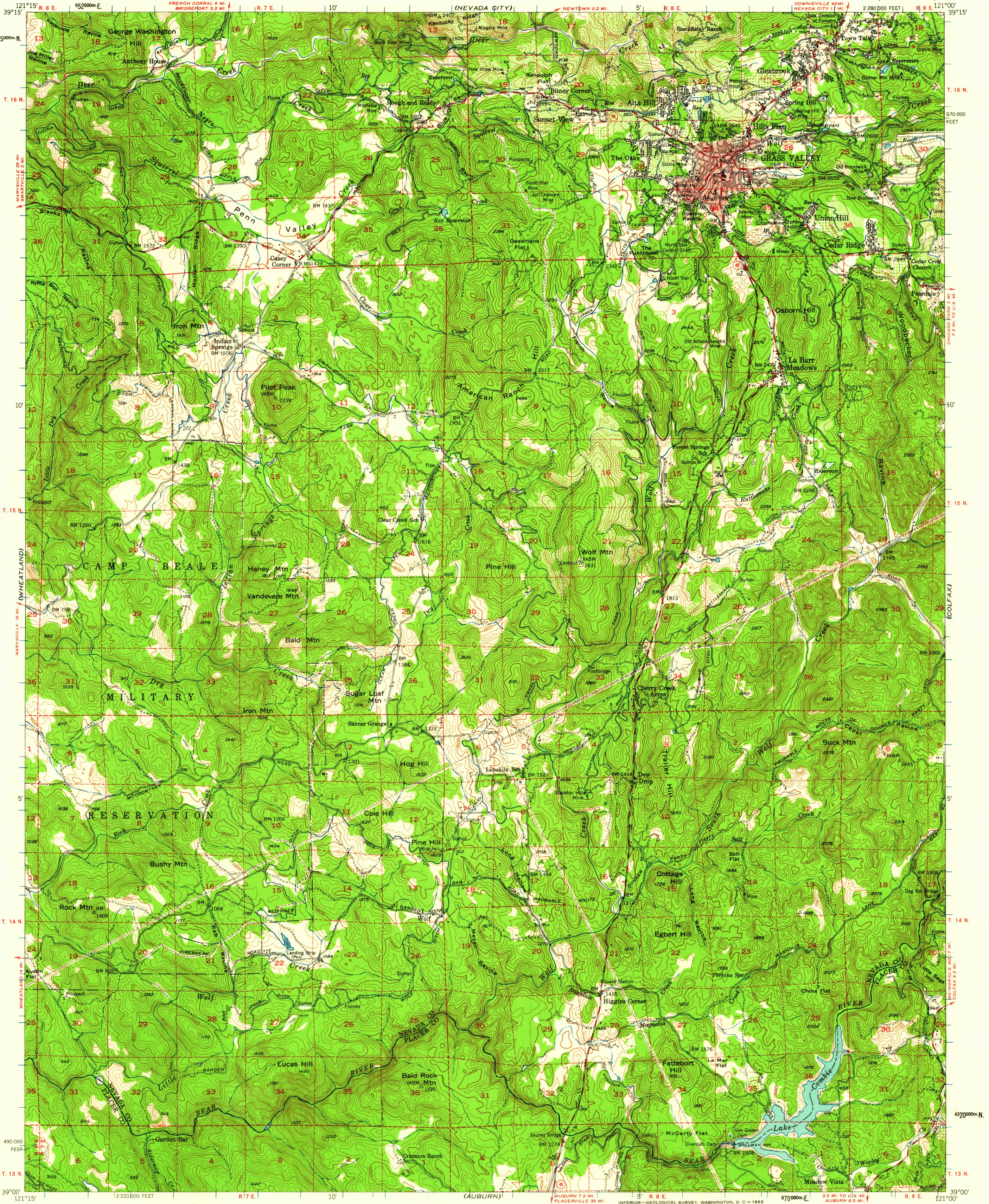
UNITED STATES
DEPARTMENT OF THE INTERIOR
GEOLOGICAL SURVEY

STATE OF CALIFORNIA
DIRECTOR OF WATER RESOURCES

GRASS VALLEY QUADRANGLE
CALIFORNIA

15 MINUTE SERIES (TOPOGRAPHIC)

(ALLEGHANY)



Mapped, edited, and published by the Geological Survey

Control by USGS and USC&GS

Topography from aerial photographs by multiplex methods
Aerial photographs taken 1947. Field check 1949

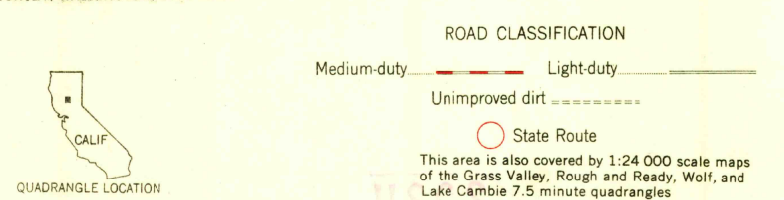
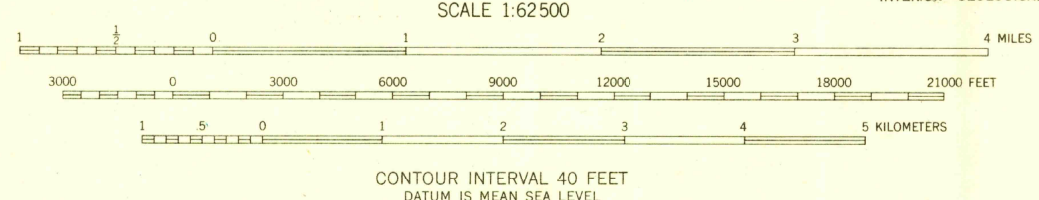
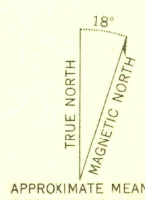
Polyconic projection. 1927 North American datum
10,000-foot grid based on California coordinate system, zone 2

Red tint indicates areas in which only landmark buildings are shown

Dashed land lines indicate approximate locations

Unchecked elevations are shown in brown

1000-meter Universal Transverse Mercator grid ticks,
zone 10, shown in blue



THIS MAP COMPLIES WITH NATIONAL MAP ACCURACY STANDARDS
FOR SALE BY U.S. GEOLOGICAL SURVEY, DENVER 25, COLORADO OR WASHINGTON 25, D. C.
A FOLDER DESCRIBING TOPOGRAPHIC MAPS AND SYMBOLS IS AVAILABLE ON REQUEST

USGS
Historical File
Topographic Division

GRASS VALLEY, CALIF.
N3900-W12100/15

1949

3705

(LINCOLN)

OCT 2-2-1982
(GEORGETOWN)