

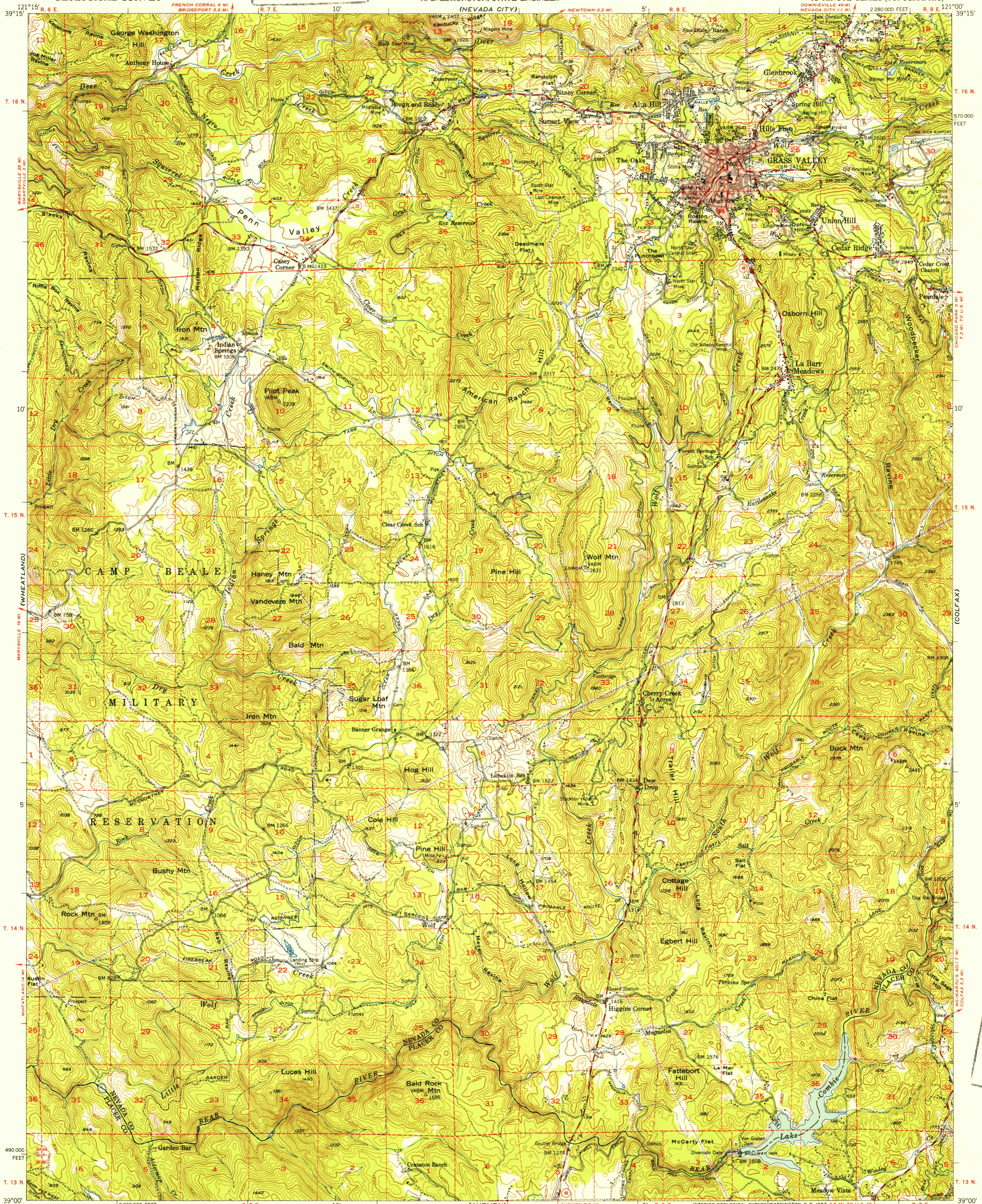
U.S.G.S. FILE COPY Inspection and Mating.

UNITED STATES DEPARTMENT OF THE INTERIOR GEOLOGICAL SURVEY

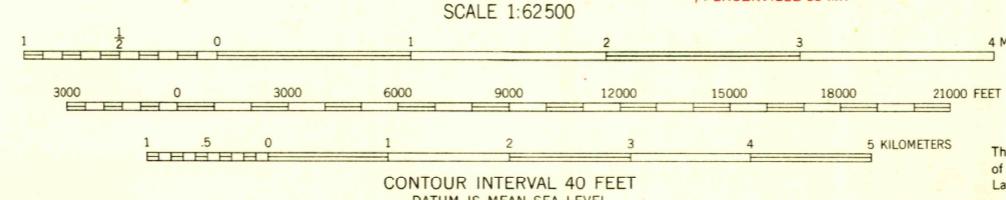
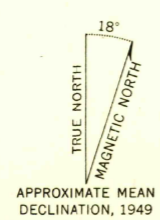
STATE OF CALIFORNIA EARL WARREN, GOVERNOR FRANK B. DURKEE, DIRECTOR OF PUBLIC WORKS A. D. EDMONSTON, STATE ENGINEER (NEVADA CITY)

GRASS VALLEY QUADRANGLE CALIFORNIA 15 MINUTE SERIES (TOPOGRAPHIC)

NORTH BLOOMFIELD 1:24,000



Mapped, edited, and published by the Geological Survey Control by USGS and USC&GS Topography from aerial photographs by multiple methods Aerial photographs taken 1947. Field check 1949 Polyconic projection. 1927 North American datum 10,000-foot grid based on California coordinate system, zone 2 Red tint indicates areas in which only landmark buildings are shown Dashed land lines indicate approximate locations Unchecked elevations are shown in brown



ROAD CLASSIFICATION Heavy-duty 4 LANE 16 LANE Light-duty Medium-duty 4 LANE 16 LANE Unimproved dirt U.S. Route State Route

USGS Historical File Topographic Division

GRASS VALLEY, CALIF. N3900-W12100/15 1949

FOR SALE BY U.S. GEOLOGICAL SURVEY, FEDERAL CENTER, DENVER, COLORADO OR WASHINGTON 25, D.C. A FOLDER DESCRIBING TOPOGRAPHIC MAPS AND SYMBOLS IS AVAILABLE ON REQUEST

U.S.G.S. FILE COPY Inspection and Mating.

FEB 12 1953

3680