

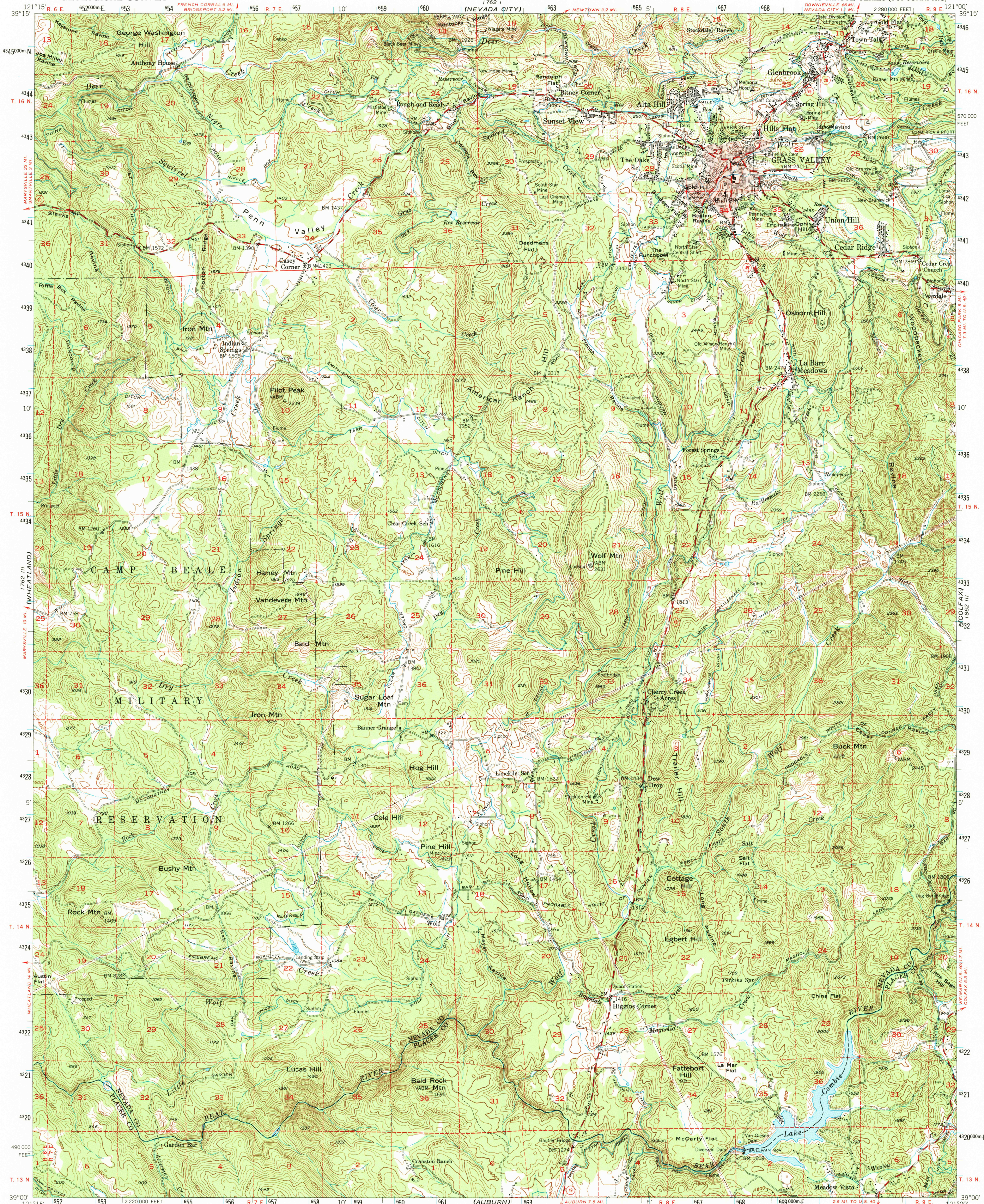
1762 IV
(BLAND)

UNITED STATES
DEPARTMENT OF THE INTERIOR
GEOLOGICAL SURVEY

STATE OF CALIFORNIA
DIRECTOR OF WATER RESOURCES

GRASS VALLEY QUADRANGLE
CALIFORNIA
15 MINUTE SERIES (TOPOGRAPHIC)

1862 IV
(ALLEGHENY)



Mapped, edited, and published by the Geological Survey

Control by USGS and USC&GS

Topography from aerial photographs by multiplex methods

Aerial photographs taken 1947. Field check 1949

Polyconic projection. 1927 North American datum

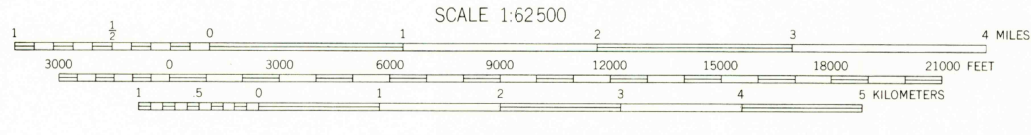
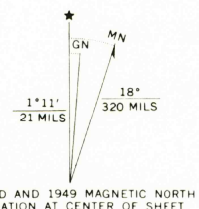
10,000-foot grid based on California coordinate system, zone 2

Red tint indicates areas in which only landmark buildings are shown

Dashed land lines indicate approximate locations

Unchecked elevations are shown in brown

1000-meter Universal Transverse Mercator grid ticks, zone 10, shown in blue



ROAD CLASSIFICATION

Medium-duty	Light-duty
Unimproved dirt	State Route

This area is also covered by 1:24,000 scale maps of the Grass Valley, Rough and Ready, Wolf, and Lake Cambie 7.5 minute quadrangles

GRASS VALLEY, CALIF.
N3900-W12100/15

1949
AMS 1762 II-SERIES V795

THIS MAP COMPLIES WITH NATIONAL MAP ACCURACY STANDARDS
FOR SALE BY U. S. GEOLOGICAL SURVEY, DENVER, COLORADO 80225 OR WASHINGTON, D. C. 20242
A FOLDER DESCRIBING TOPOGRAPHIC MAPS AND SYMBOLS IS AVAILABLE ON REQUEST

1762 IV
(LINCOLN)

1862 IV
(GEORGETOWN)