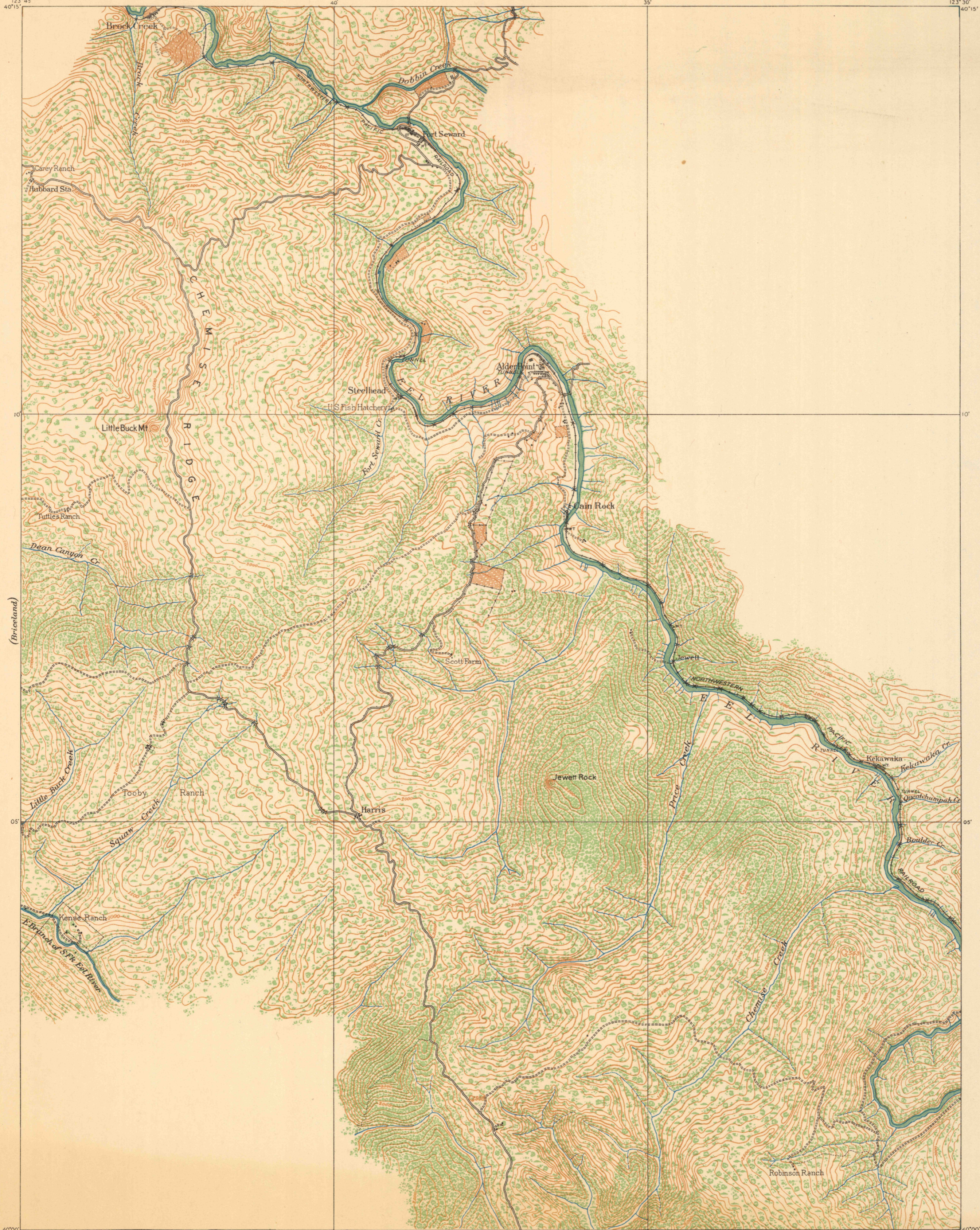


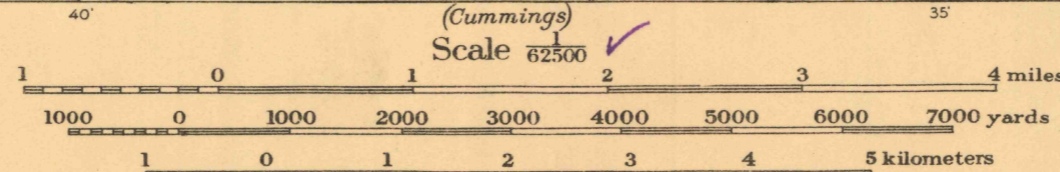
(Derrille)



(Briceland)

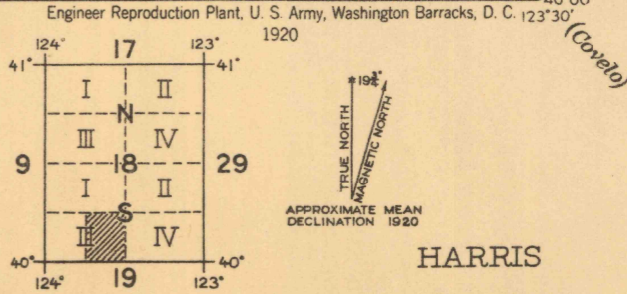
(Cape Vizcarra)

Col Ches. L. Potter, Corps of Engrs., Department Engineer.
 Captain R. Park, Corps of Engrs., Topographical Inspector.
 1st Lieut. D. O. Elliott, Corps of Engrs., in charge of party.
 Sgt. Ray S. Perrin, Co. F, 2nd Engrs., in charge of party.
 Surveyed in 1916
 Control from U.S.C. & G.S., and Co. F, 2nd Engrs.



Contour Interval 100 feet
 Datum is mean sea level

NOTE: OFFICERS USING THIS MAP WILL MARK HEREON CORRECTIONS AND ADDITIONS WHICH COME TO THEIR ATTENTION AND MAIL DIRECT TO "THE CHIEF OF ENGINEERS, WASHINGTON, D.C."



(Covelo)