

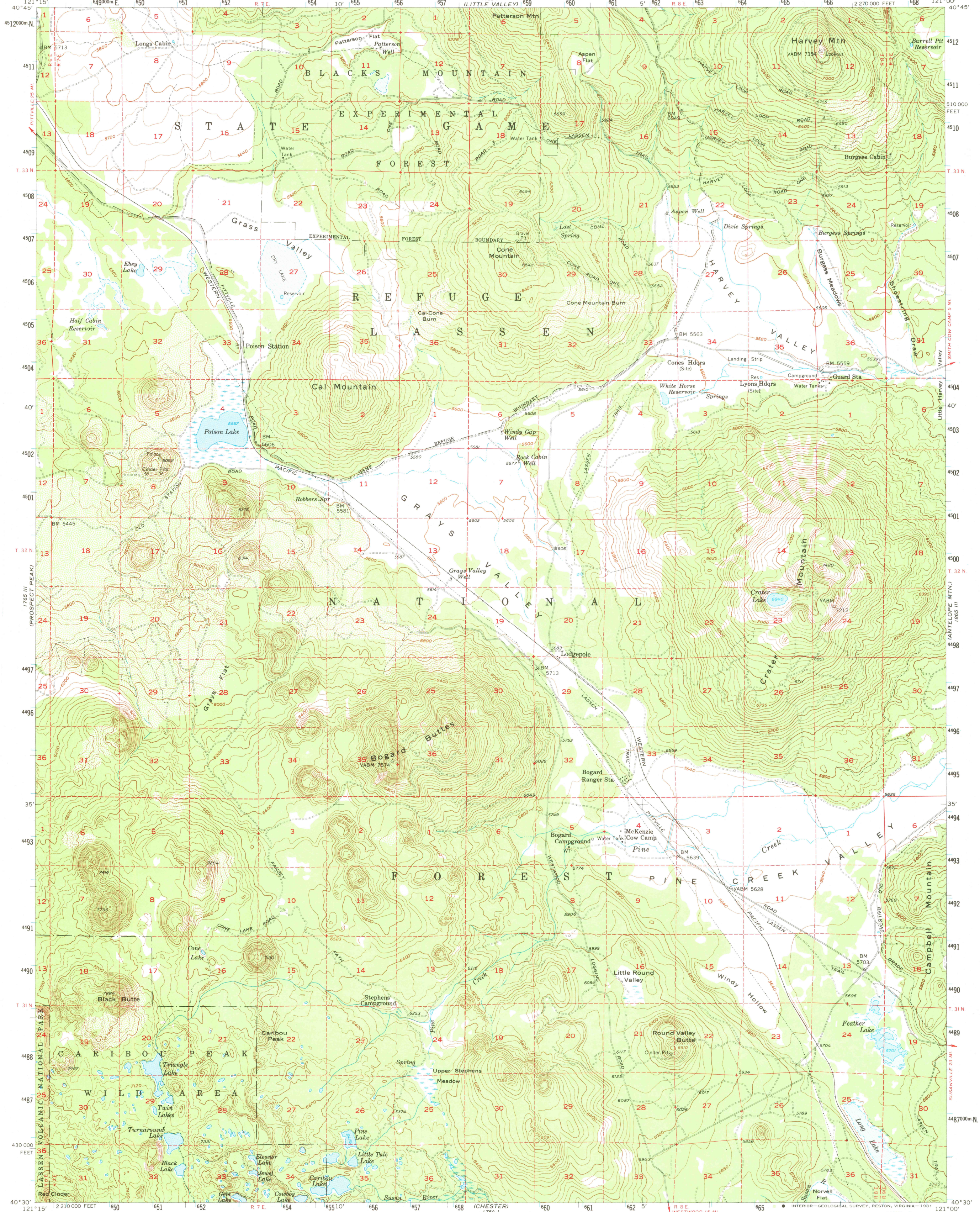
1765 III
JELICO

UNITED STATES
DEPARTMENT OF THE INTERIOR
GEOLOGICAL SURVEY

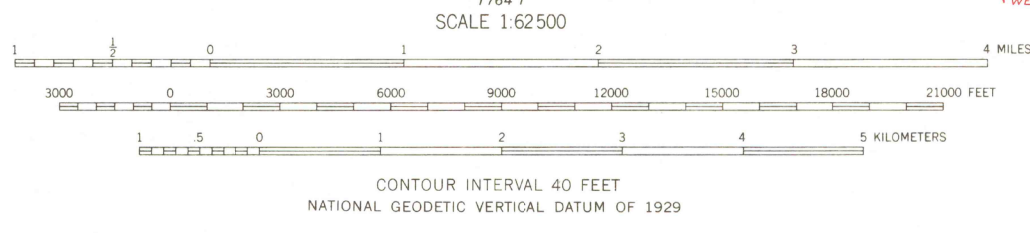
STATE OF CALIFORNIA
REPRESENTED BY THE
DIRECTOR OF WATER RESOURCES

HARVEY MTN. QUADRANGLE
CALIFORNIA-LASSEN CO.
15 MINUTE SERIES (TOPOGRAPHIC)

1766 IV
HAYDEN HILL



Mapped, edited, and published by the Geological Survey
Control by USGS, USC&GS, and USFS
Topography from aerial photographs by multiplex methods
Aerial photographs taken 1951. Field check 1956
Polyconic projection. 1927 North American datum
10,000-foot grid based on California coordinate system,
zone 1
1000-meter Universal Transverse Mercator grid ticks,
zone 10, shown in blue
To place on the predicted North American Datum 1983
move the projection lines 17 meters north and
90 meters east
Dashed land lines indicate approximate locations
There may be private inholdings within the boundaries of
the National or State reservations shown on this map



ROAD CLASSIFICATION
 Light-duty ———— Unimproved dirt - - - - -



HARVEY MTN., CALIF.
 N4030—W12100/15

THIS MAP COMPLIES WITH NATIONAL MAP ACCURACY STANDARDS
 FOR SALE BY U.S. GEOLOGICAL SURVEY, DENVER, COLORADO 80225, OR RESTON, VIRGINIA 22092
 A FOLDER DESCRIBING TOPOGRAPHIC MAPS AND SYMBOLS IS AVAILABLE ON REQUEST

USGS
 HISTORICAL FILE
 NATIONAL MAPPING DIVISION

1956
 DMA 1765 II—SERIES V795

JUN 29 1981
 4100