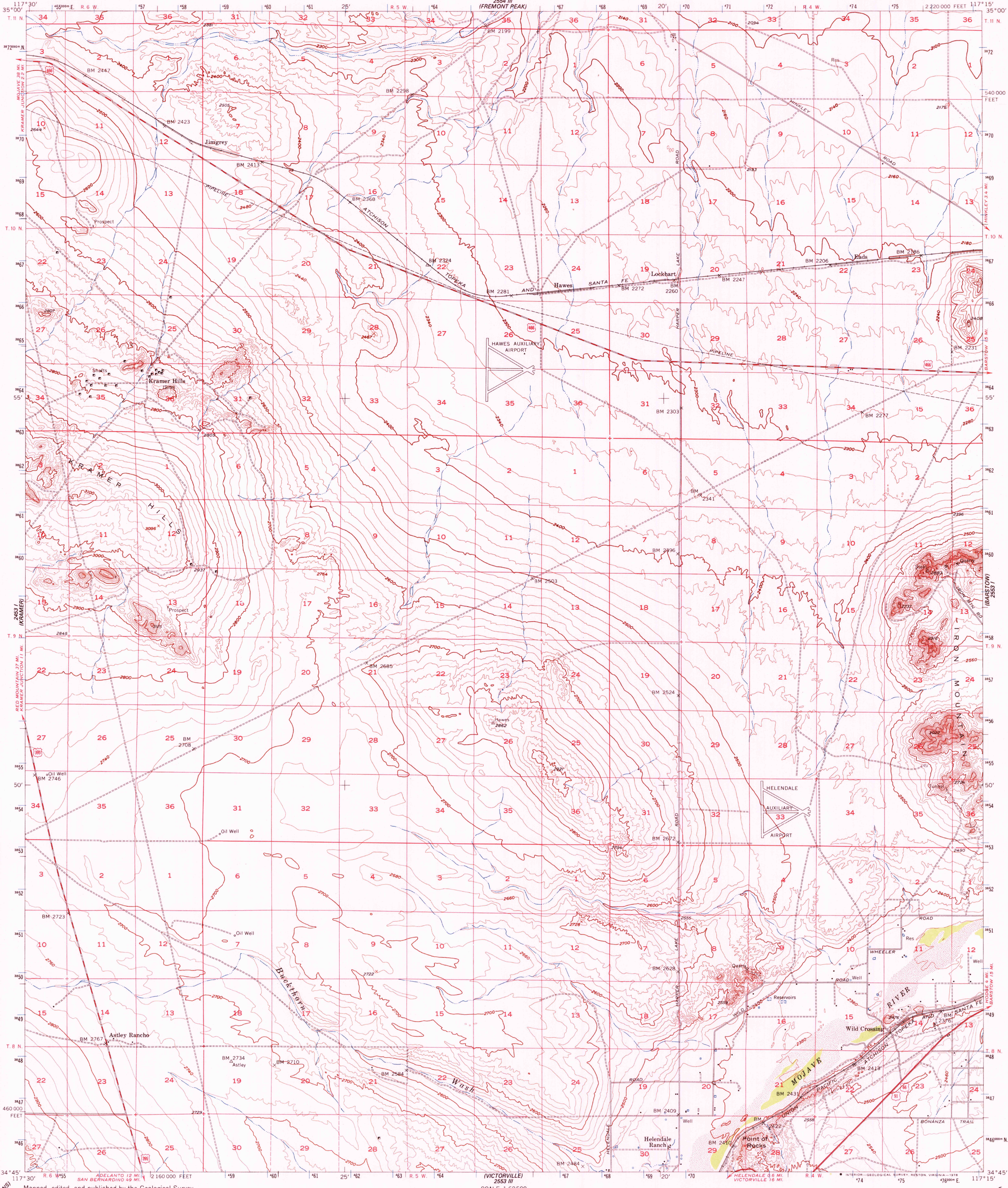


UNITED STATES  
DEPARTMENT OF THE INTERIOR  
GEOLOGICAL SURVEY

HAWES QUADRANGLE  
CALIFORNIA—SAN BERNARDINO CO  
15 MINUTE SERIES (TOPOGRAPHIC)



2463 (KRAMER HILLS)  
2464 (KRAMER HILLS)  
2465 (KRAMER HILLS)  
2466 (KRAMER HILLS)  
2467 (KRAMER HILLS)  
2468 (KRAMER HILLS)  
2469 (KRAMER HILLS)  
2470 (KRAMER HILLS)  
2471 (KRAMER HILLS)  
2472 (KRAMER HILLS)  
2473 (KRAMER HILLS)  
2474 (KRAMER HILLS)  
2475 (KRAMER HILLS)  
2476 (KRAMER HILLS)  
2477 (KRAMER HILLS)  
2478 (KRAMER HILLS)  
2479 (KRAMER HILLS)  
2480 (KRAMER HILLS)  
2481 (KRAMER HILLS)  
2482 (KRAMER HILLS)  
2483 (KRAMER HILLS)  
2484 (KRAMER HILLS)  
2485 (KRAMER HILLS)  
2486 (KRAMER HILLS)  
2487 (KRAMER HILLS)  
2488 (KRAMER HILLS)  
2489 (KRAMER HILLS)  
2490 (KRAMER HILLS)  
2491 (KRAMER HILLS)  
2492 (KRAMER HILLS)  
2493 (KRAMER HILLS)  
2494 (KRAMER HILLS)  
2495 (KRAMER HILLS)  
2496 (KRAMER HILLS)  
2497 (KRAMER HILLS)  
2498 (KRAMER HILLS)  
2499 (KRAMER HILLS)  
2500 (KRAMER HILLS)

Mapped, edited, and published by the Geological Survey  
Control by USGS, USC&GS, and USCE  
Topography from aerial photographs by photogrammetric methods  
Aerial photographs taken 1952; Field check 1956  
Polyconic projection, 1927 North American datum  
10,000-foot grid based on California coordinate system, zone 5  
Dashed land lines indicate approximate locations  
Unchecked elevations are shown in brown  
1000-meter Universal Transverse Mercator grid ticks,  
zone 11, shown in blue

SCALE 1:62,500  
3000 0 3000 6000 9000 12000 15000 18000 21000 FEET  
1 5 0 1 2 3 4 5 KILOMETERS  
CONTOUR INTERVAL 20 FEET  
NATIONAL GEODETIC VERTICAL DATUM OF 1929

ROAD CLASSIFICATION  
Heavy-duty ——— Light-duty ———  
Medium-duty ——— Unimproved dirt ———  
U.S. Route

USGS  
Historical File  
Topographic Division

HAWES, CALIF.  
N3445-W11715/7.5

APR 11 1978  
5740

1956  
AMS 2553 IV—SERIES V795

THIS MAP COMPLIES WITH NATIONAL MAP ACCURACY STANDARDS  
FOR SALE BY U.S. GEOLOGICAL SURVEY, RESTON, VIRGINIA 22092  
A FOLDER DESCRIBING TOPOGRAPHIC MAPS AND SYMBOLS IS AVAILABLE ON REQUEST