

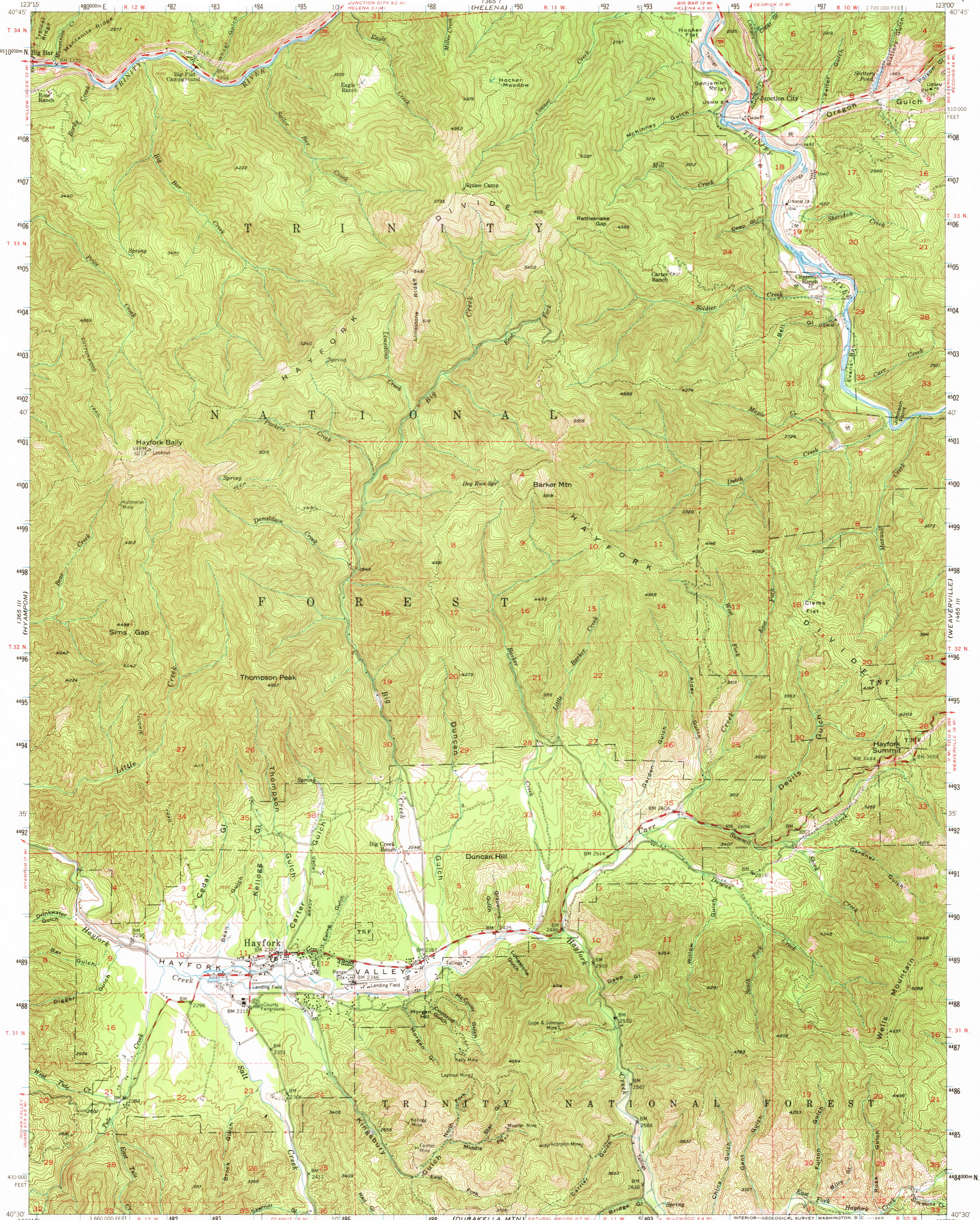
1365 IV
(PICKETT PEAK)

UNITED STATES
DEPARTMENT OF THE INTERIOR
GEOLOGICAL SURVEY

STATE OF CALIFORNIA
REPRESENTED BY THE
DIRECTOR OF PUBLIC WORKS

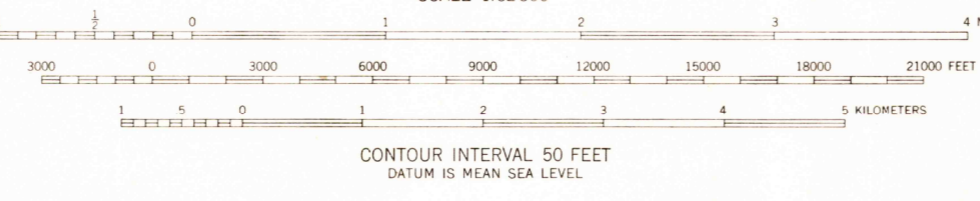
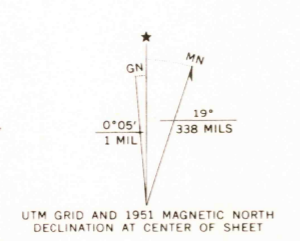
HAYFORK QUADRANGLE
CALIFORNIA-TRINITY CO.
15 MINUTE SERIES (TOPOGRAPHIC)

1365 IV
(TRINITY LAKE)



1364 IV
(PICKETT PEAK)

Mapped, edited, and published by the Geological Survey
Control by USGS and USC&GS
Topography from aerial photographs by multiplex methods
Aerial photographs taken 1947. Field check 1951
Polyconic projection. 1927 North American datum
10,000-foot grid based on California coordinate system, zone 1.
Certain land lines are omitted because of insufficient data
All recovered corners are shown
Dashed land lines indicate approximate locations
Unchecked elevations are shown in brown
1000-meter Universal Transverse Mercator grid ticks,
zone 10, shown in blue



CONTOUR INTERVAL 50 FEET
DATUM IS MEAN SEA LEVEL
FOR SALE BY U. S. GEOLOGICAL SURVEY, DENVER, COLORADO 80225 OR WASHINGTON, D. C. 20242
A FOLDER DESCRIBING TOPOGRAPHIC MAPS AND SYMBOLS IS AVAILABLE ON REQUEST

Historical File
Topographic Division
U.S.G.S.
ROAD CLASSIFICATION
Heavy-duty 4 LANE 6 LANE Light-duty
Medium-duty 4 LANE 6 LANE Unimproved dirt
U. S. Route
State Route
HAYFORK, CALIF.
N4030-W12300/15
1951
AMS 1365 II-SERIES V795

1364 IV
(CHANCELLER PK)

4925
DEC 17 1968