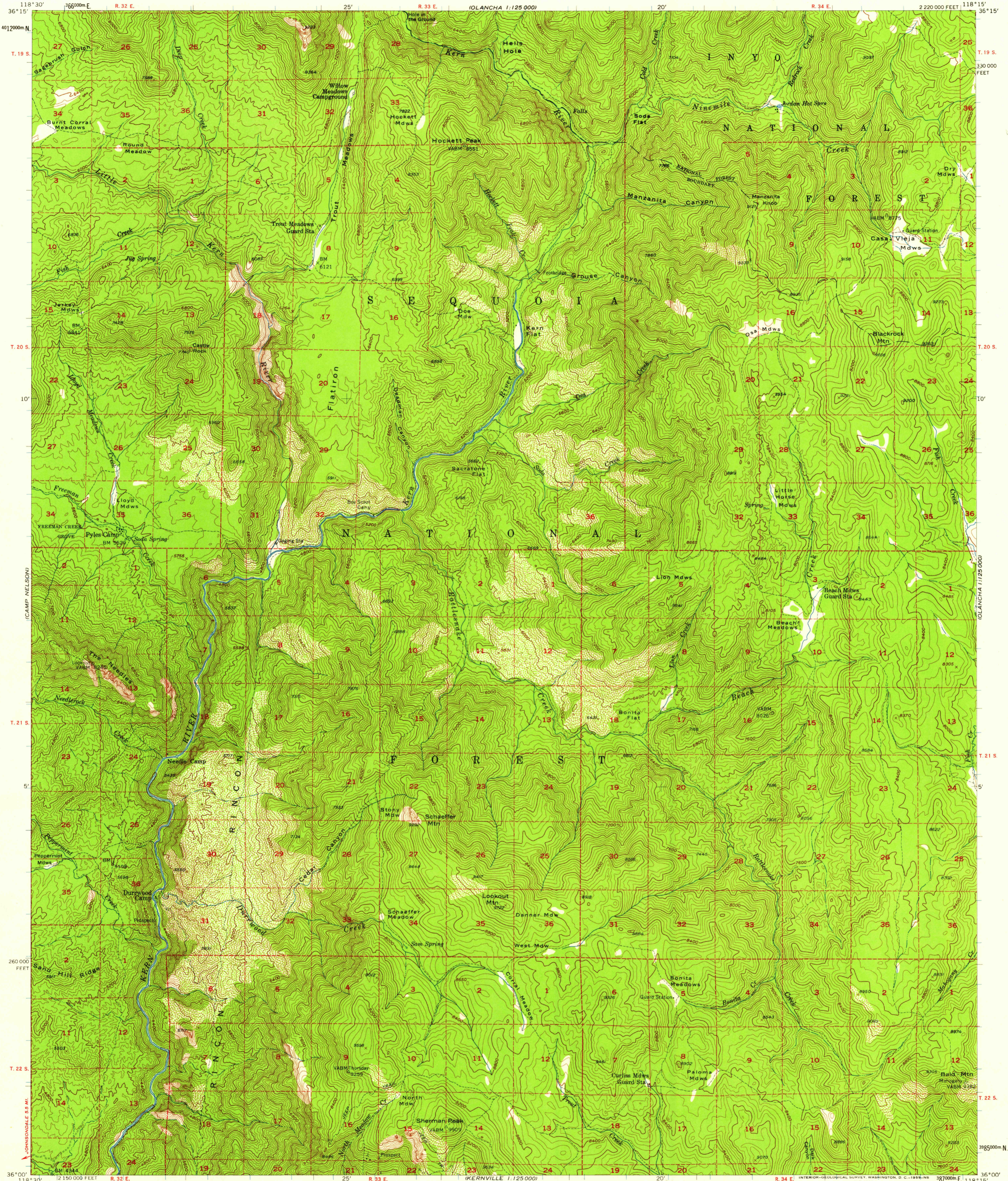


(MINERAL KING)

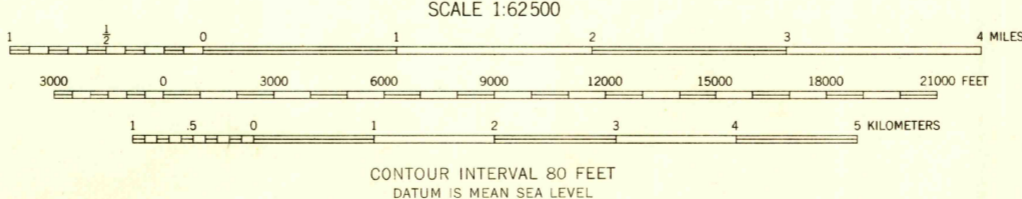
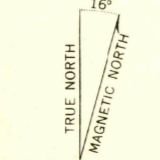
UNITED STATES  
DEPARTMENT OF THE INTERIOR  
GEOLOGICAL SURVEY

HOCKETT PEAK QUADRANGLE  
CALIFORNIA-TULARE CO.  
15 MINUTE SERIES (TOPOGRAPHIC)

(OLANCHA 1:125 000)



Mapped, edited, and published by the Geological Survey  
Control by USGS, USC&GS, and USFS  
Topography from aerial photographs by photogrammetric methods  
by USFS, 1954, and USGS, 1956  
Aerial photographs taken 1953-1955. Field check 1956  
Polyconic projection. 1927 North American datum  
10,000-foot grid based on California coordinate system,  
zone 4  
1000-meter Universal Transverse Mercator grid ticks,  
zone 11, shown in blue  
Dashed land lines indicate approximate locations  
Certain land lines are omitted in T. 20 S. - R. 33 E.  
because of insufficient data  
Unchecked elevations are shown in brown



USGS  
Historical File  
Topographic Division

U.S.G.S.  
FILE COPY  
TOPOGRAPHIC DIVISION



ROAD CLASSIFICATION  
Unimproved dirt - - - - -

HOCKETT PEAK, CALIF.  
N3600-W11815/15

THIS MAP COMPLIES WITH NATIONAL MAP ACCURACY STANDARDS  
FOR SALE BY U. S. GEOLOGICAL SURVEY, DENVER 2, COLORADO OR WASHINGTON 25, D. C.  
A FOLDER DESCRIBING TOPOGRAPHIC MAPS AND SYMBOLS IS AVAILABLE ON REQUEST

1956

JAN 20 1959

3500