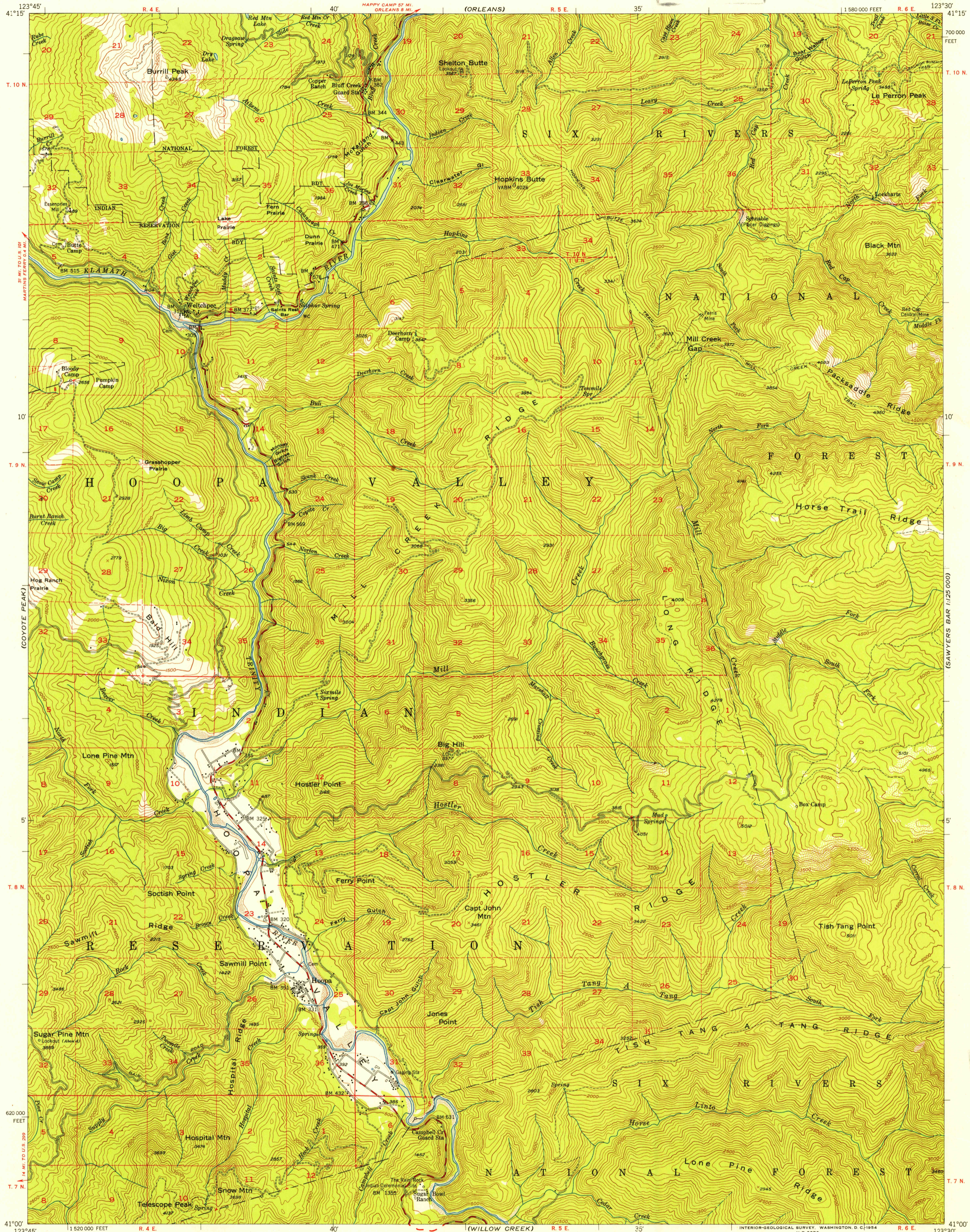


FILE COPY
Interior and Editing

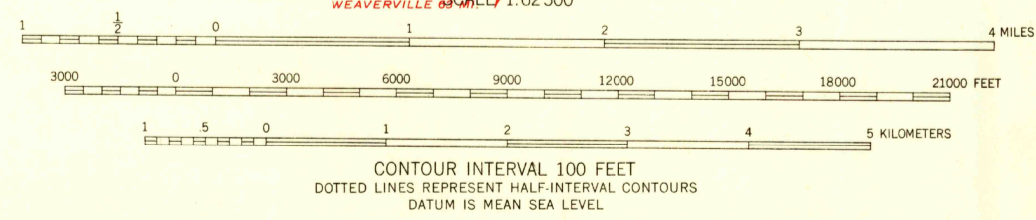
(SAWYERS BAR)
1:25,000



FILE COPY
Interior and Editing

FILE COPY
Interior and Editing

Mapped, edited, and published by the Geological Survey
Control by USGS and USC&GS
Topography from aerial photographs by multiplex methods
Aerial photographs taken 1947. Field check 1952
Polyconic projection. 1927 North American datum
10,000-foot grid based on California coordinate system, zone 1
Dashed land lines indicate approximate locations
Certain land lines are omitted because of insufficient data
Unchecked elevations are shown in brown



ROAD CLASSIFICATION

Heavy-duty	4 LANE 16 LANE	Light-duty
Medium-duty	4 LANE 16 LANE	Unimproved dirt
U.S. Route		State Route



USGS
Historical File
Topographic Division

HOOPA, CALIF.
N4100-W12330/15
1952

THIS MAP COMPLIES WITH NATIONAL MAP ACCURACY STANDARDS
FOR SALE BY U. S. GEOLOGICAL SURVEY, FEDERAL CENTER, DENVER, COLORADO OR WASHINGTON 25, D. C.
A FOLDER DESCRIBING TOPOGRAPHIC MAPS AND SYMBOLS IS AVAILABLE ON REQUEST

MAR 24 1954