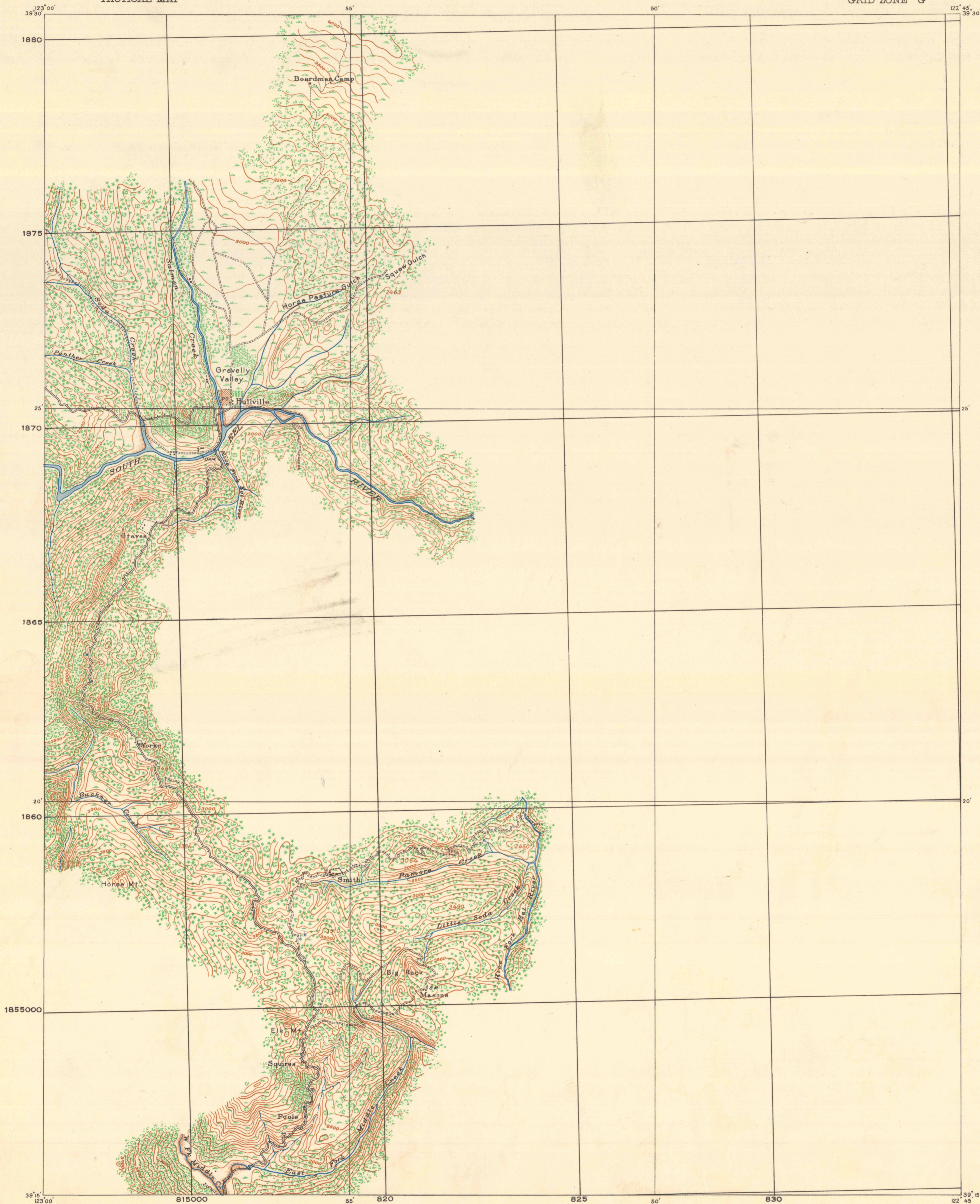


CONTROLLED
RECONNAISSANCE SHEET
30-S-I-W/2

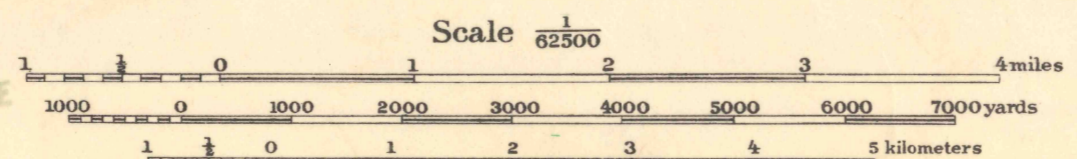
CORPS OF ENGINEERS, U. S. ARMY
TACTICAL MAP

CALIFORNIA
HULLVILLE QUADRANGLE
GRID ZONE "G"



Field work and compilation under the direction of
Col. Chas. L. Potter, Corps of Engineers, U. S. A.,
Department Engineer, Western Department.
Capt. R. Park, Corps of Engineers, U. S. A.,
Topographical Inspector.
1st Lieut. Rufus W. Putnam, Corps of Engineers,
in charge of party. Sergt. Fritz Schoof, Co. F,
2nd Engineers, in charge of party.
Surveyed in 1916.

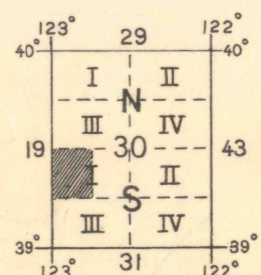
FILE COPY
MAP INFORMATION OFFICE



Contour Interval 100 feet
Datum is mean sea level

FIVE THOUSAND YARD GRID COMPUTED FROM "GRID SYSTEM FOR PROGRESSIVE MAPS
IN THE U. S." ZONE G, U. S. C. & G. S. SPECIAL PUBLICATION NO. 59.
(THE LAST THREE DIGITS OF THE GRID NUMBERS ARE OMITTED)

NOTE: OFFICERS USING THIS MAP WILL MARK HEREON CORRECTIONS AND ADDITIONS WHICH COME
TO THEIR ATTENTION AND MAIL DIRECT TO "THE CHIEF OF ENGINEERS, WASHINGTON, D. C."



TRUE NORTH
MAGNETIC NORTH
APPROXIMATE MEAN
DECLINATION 1922

HULLVILLE
CAL

Engineer Reproduction Plant, U. S. Army, Washington Barracks, D. C.
1922

Now
Lake Pillsbury

22F201