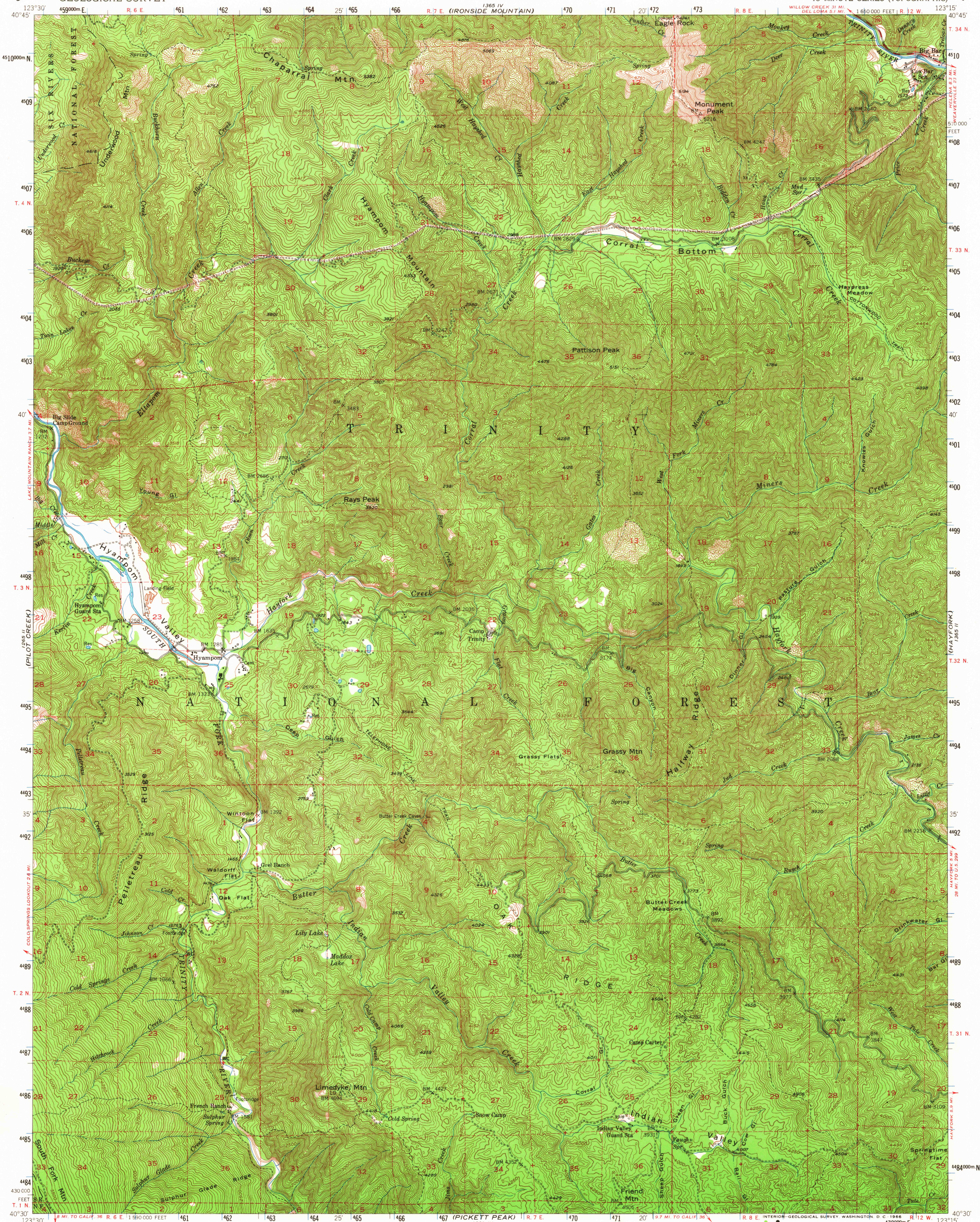


123°30' W
1981
WILLOW CREEK

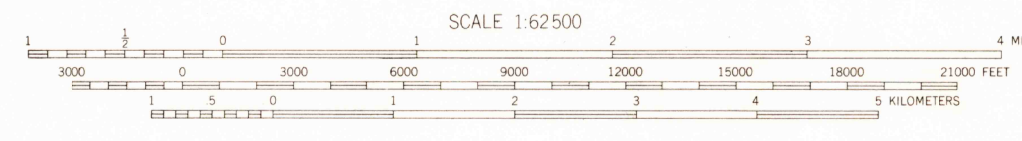
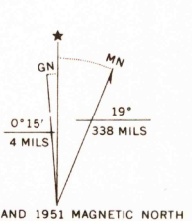
123°15' W
1981
HELLENA



123°30' W
1981
TELEOCS (BURG)

123°15' W
1981
DUBAKELLA MTN

Mapped, edited, and published by the Geological Survey
Control by USGS and USC&GS
Topography from aerial photographs by multiplex methods
Aerial photographs taken 1947. Field check 1951
Polyconic projection. 1927 North American datum
10,000-foot grid based on California coordinate system, zone 1
Certain land lines are omitted because of insufficient data.
All recovered corners are shown
Dashed land lines indicate approximate locations
Unchecked elevations are shown in brown
1000-meter Universal Transverse Mercator grid ticks,
zone 10, shown in blue



SCALE 1:62,500
CONTOUR INTERVAL 50 FEET
DATUM IS MEAN SEA LEVEL
FOR SALE BY U. S. GEOLOGICAL SURVEY, DENVER, COLORADO 80225 OR WASHINGTON, D. C. 20242
A FOLDER DESCRIBING TOPOGRAPHIC MAPS AND SYMBOLS IS AVAILABLE ON REQUEST

USGS
Historical File
Topographic Division

ROAD CLASSIFICATION
Medium-duty ——— Light-duty ———
Unimproved dirt - - - - -
U. S. Route □

U.S.G.S.
TOPOGRAPHIC DIVISION

HYAMPOM, CALIF.
N4030-W12315/15
1951
AMS 1365 III-SERIES V795

5760