

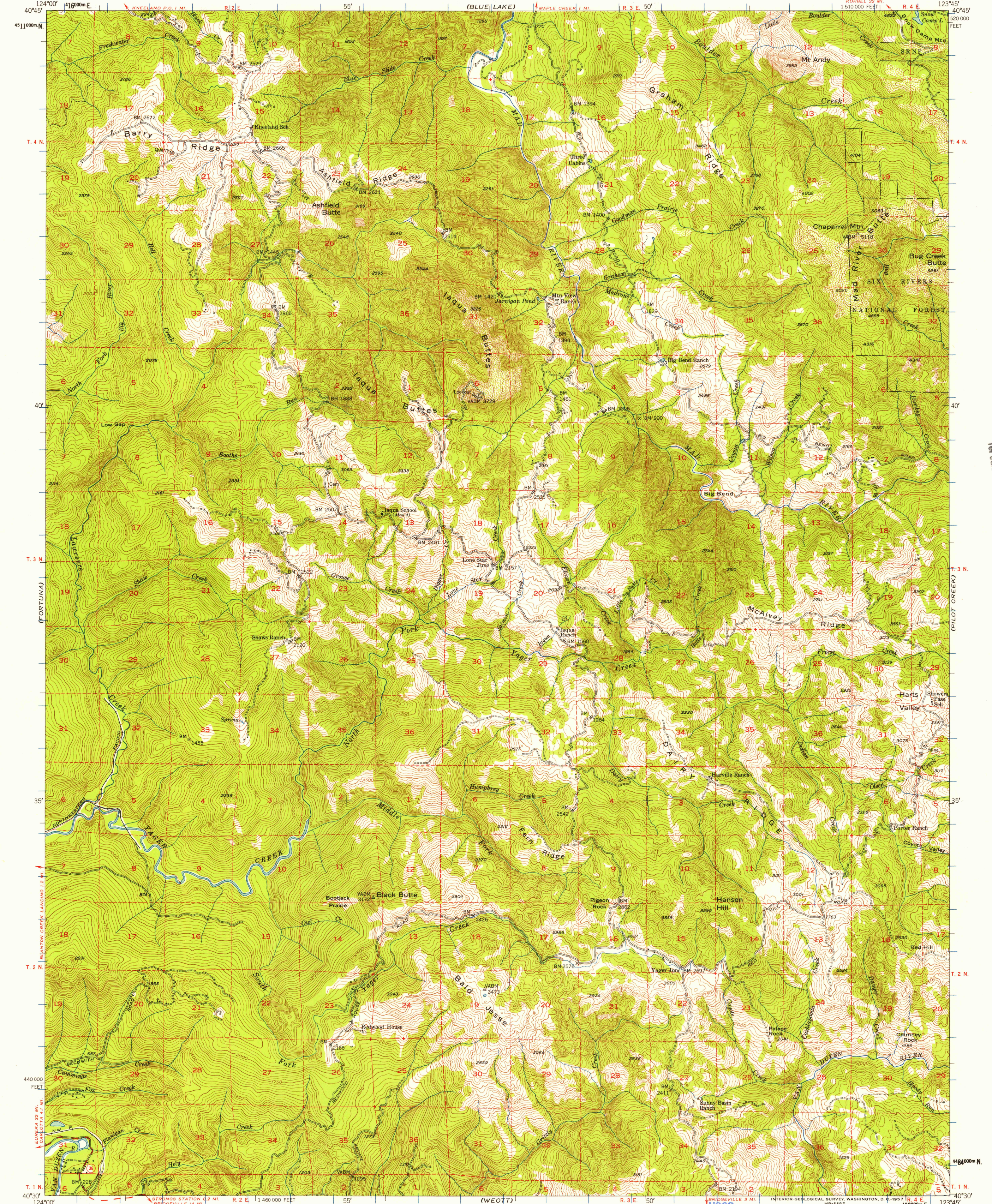
(EUREKA)

UNITED STATES  
DEPARTMENT OF THE INTERIOR  
GEOLOGICAL SURVEY

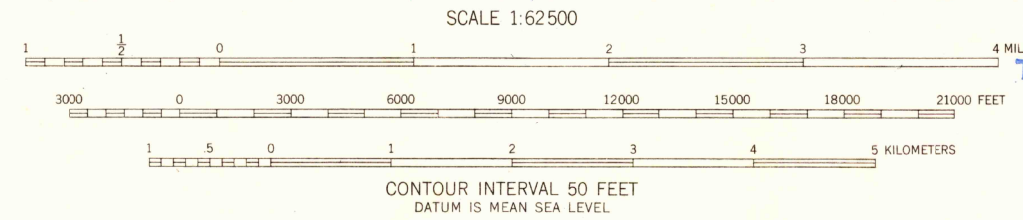
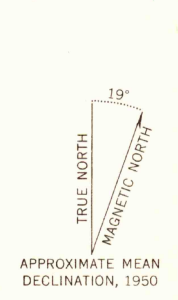
STATE OF CALIFORNIA  
REPRESENTED BY THE  
DIRECTOR OF PUBLIC WORKS

IAQUA BUTTES QUADRANGLE  
CALIFORNIA-HUMBOLDT CO.  
15 MINUTE SERIES (TOPOGRAPHIC)

(WILLOW CREEK)



Mapped, edited, and published by the Geological Survey  
Control by USGS, USC&GS, and USCE  
Topography from aerial photographs by multiple methods  
Aerial photographs taken 1947. Field check 1950  
Polyconic projection. 1927 North American Datum  
10,000-foot grid based on California coordinate system, zone 1  
Dashed land lines indicate approximate location  
Unchecked elevations are shown in brown  
1000-meter Universal Transverse Mercator grid ticks,  
zone 10, shown in blue



USGS  
Historical File  
Topographic Division

ROAD CLASSIFICATION

Heavy-duty	4 LANE 16 LANE	Light-duty	4 LANE 16 LANE
Medium-duty	4 LANE 16 LANE	Unimproved dirt	-----

   U. S. Route    
    State Route

U.S.G.S.  
FILE COPY  
TOPOGRAPHIC DIVISION

IAQUA BUTTES, CALIF.  
N4030-W12345/15  
1950

FOR SALE BY U. S. GEOLOGICAL SURVEY, FEDERAL CENTER, DENVER, COLORADO OR WASHINGTON 25, D. C.  
A FOLDER DESCRIBING TOPOGRAPHIC MAPS AND SYMBOLS IS AVAILABLE ON REQUEST

U.S.G.S.  
FILE COPY  
TOPOGRAPHIC DIVISION

NOV 12 1957  
2880