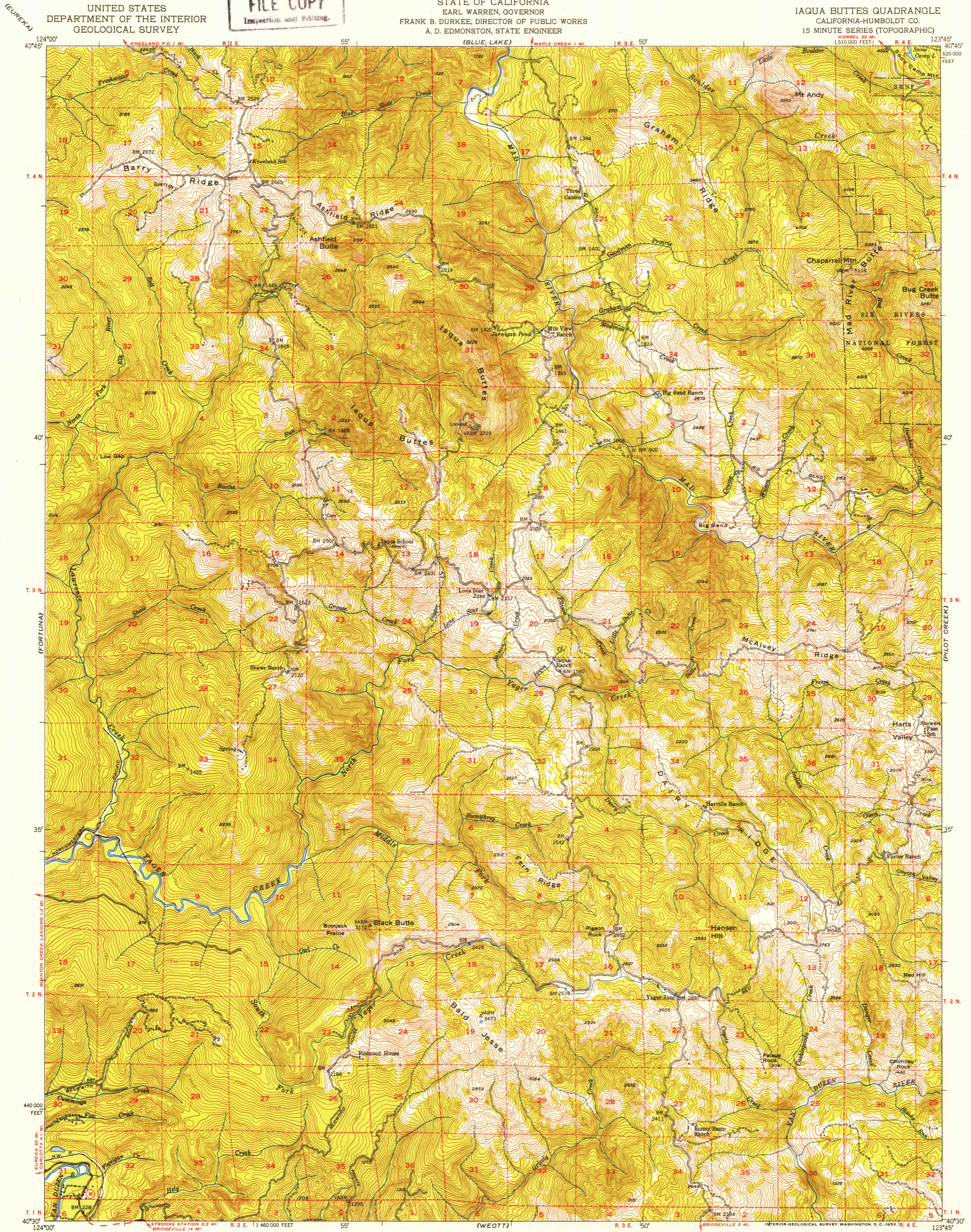


U. S. G. S.  
**FILE COPY**  
Investigation and Mapping.

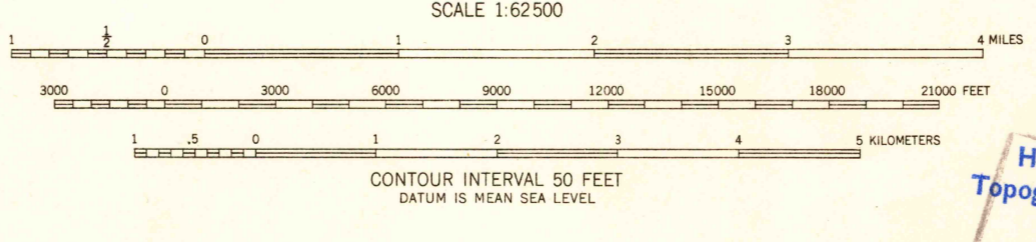
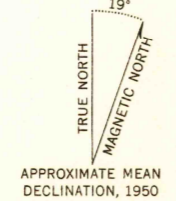
UNITED STATES  
DEPARTMENT OF THE INTERIOR  
GEOLOGICAL SURVEY

STATE OF CALIFORNIA  
EARL WARREN, GOVERNOR  
FRANK B. DURKEE, DIRECTOR OF PUBLIC WORKS  
A. D. EDMONSTON, STATE ENGINEER

IAQUA BUTTES QUADRANGLE  
CALIFORNIA-HUMBOLDT CO.  
15 MINUTE SERIES (TOPOGRAPHIC)



Mapped, edited, and published by the Geological Survey  
Control by USGS, USC&GS, and USCE  
Topography from aerial photographs by multiplex methods  
Aerial photographs taken 1947. Field check 1950  
Polyconic projection. 1927 North American Datum  
10,000-foot grid based on California coordinate system, zone 1  
Dashed land lines indicate approximate location  
Unchecked elevations are shown in brown



ROAD CLASSIFICATION  
Heavy-duty **4 LANE 16 LANE** Light-duty  
Medium-duty **4 LANE 6 LANE** Unimproved dirt  
U. S. Route State Route

USGS  
Historical File  
Topographic Division  
**FILE COPY**  
Investigation and Mapping.

IAQUA BUTTES, CALIF.  
N4030-W12345/15  
1950

FOR SALE BY U. S. GEOLOGICAL SURVEY, FEDERAL CENTER, DENVER, COLORADO OR WASHINGTON, D. C.  
A FOLDER DESCRIBING TOPOGRAPHIC MAPS AND SYMBOLS IS AVAILABLE ON REQUEST