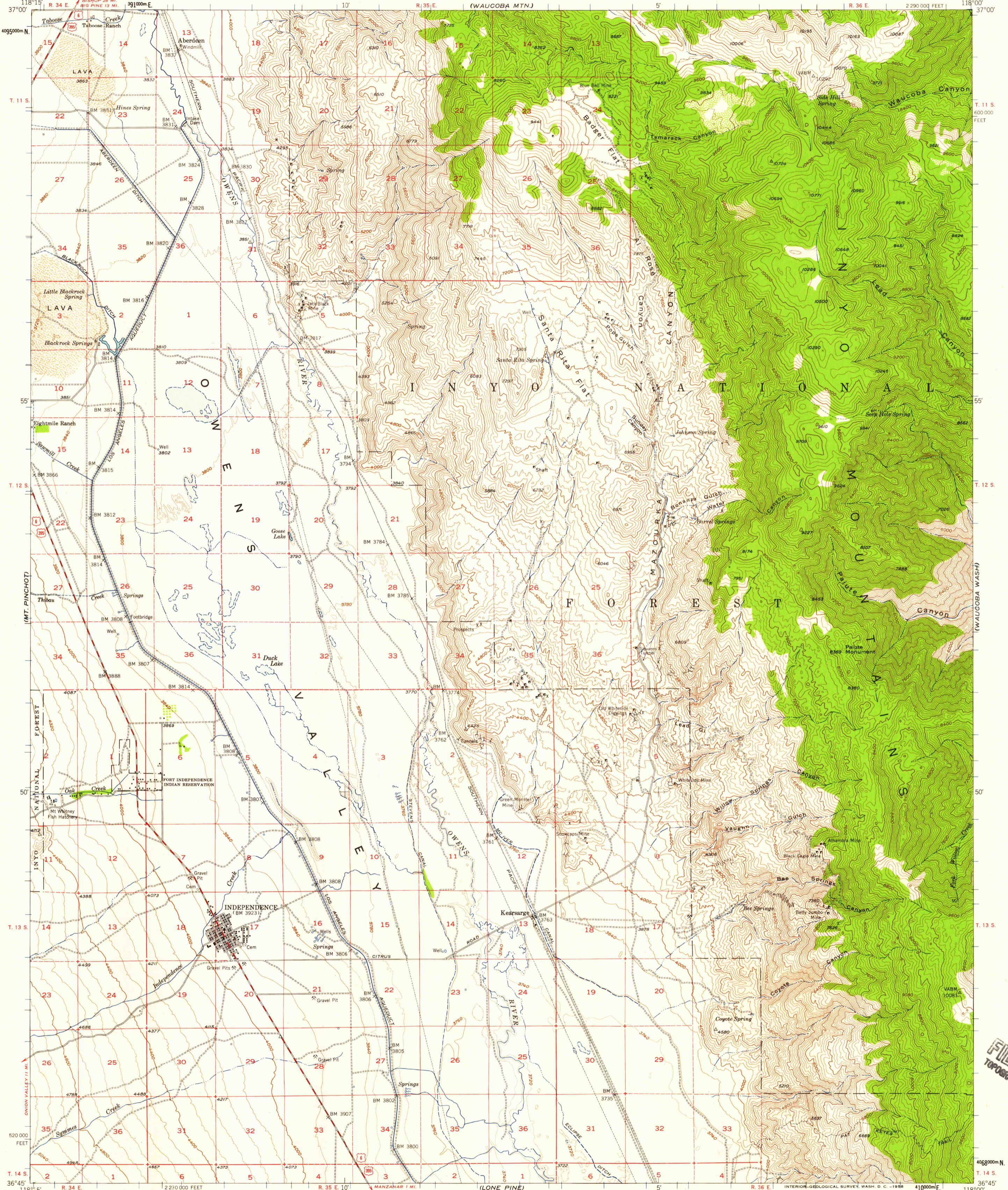
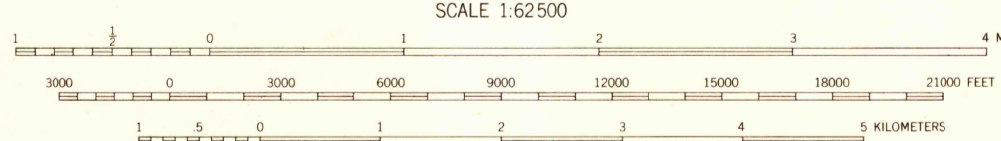
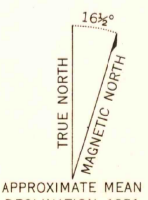


(LDA 1:250 000)



Mapped, edited, and published by the Geological Survey
Control by USGS, USC&GS, and City of Los Angeles
Topography from aerial photographs by multiplex methods
and by planetable surveys 1951. Aerial photographs taken 1947
Polyconic projection. 1927 North American datum
10,000-foot grid based on California coordinate system, zone 4
1000-meter Universal Transverse Mercator grid ticks,
zone 11, shown in blue
Dashed land lines indicate approximate locations
Unchecked elevations are shown in brown



CONTOUR INTERVAL 80 FEET
DASHED LINES REPRESENT 20-FOOT CONTOURS
DATUM IS MEAN SEA LEVEL

USGS
Historical File
Topographic Division

ROAD CLASSIFICATION
Medium-duty ——— Light-duty ———
Unimproved dirt - - - - -
U.S. Route



INDEPENDENCE, CALIF.
N3645-W11800/15
1951
MINOR CORRECTIONS MADE 1958

NOV 10 1958

U.S.G.S.
FILE COPY
TOPOGRAPHIC DIVISION

2835