

(BIG PINE)

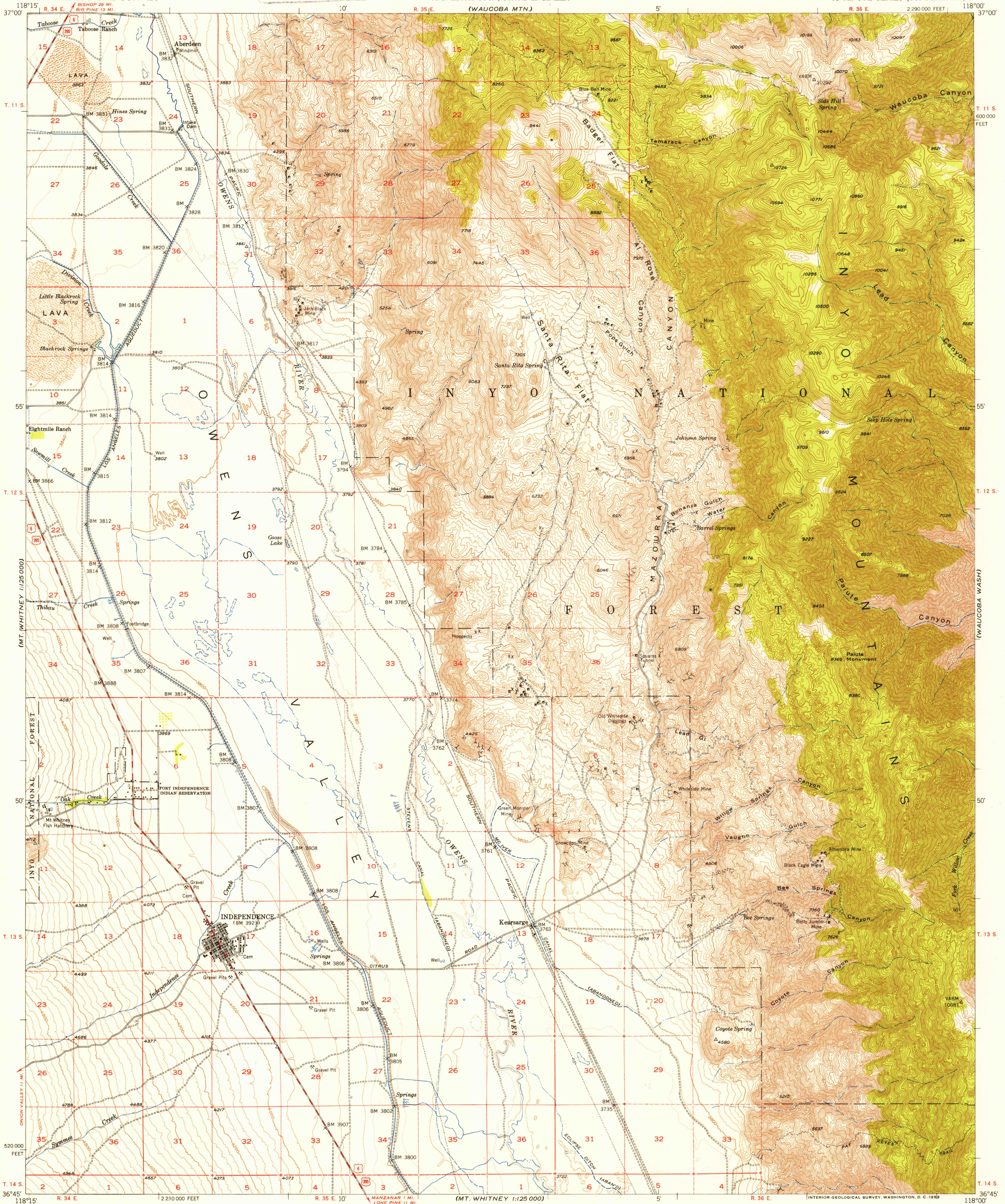
UNITED STATES DEPARTMENT OF THE INTERIOR GEOLOGICAL SURVEY

U.S.G.S. FILE COPY Inspection and Editing.

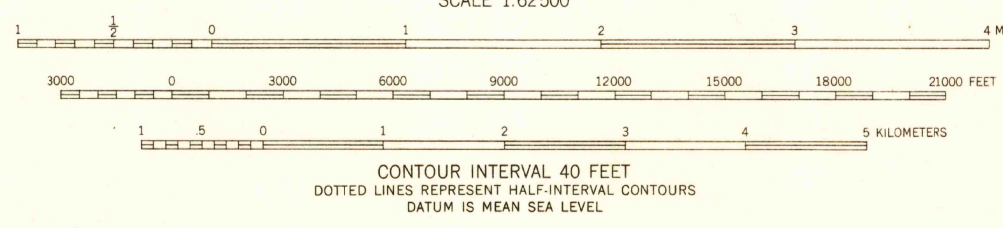
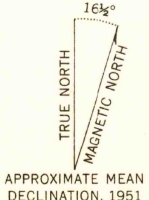
STATE OF CALIFORNIA EARL WARREN, GOVERNOR FRANK B. DURKEE, DIRECTOR OF PUBLIC WORKS A. D. EDMONSTON, STATE ENGINEER (WALCOBA MTN.)

INDEPENDENCE QUADRANGLE CALIFORNIA-INYO CO. 15 MINUTE SERIES (TOPOGRAPHIC)

(LONE PINE 1:250 000)



Mapped, edited, and published by the Geological Survey Control by USGS, USC&GS, and City of Los Angeles Topography from aerial photographs by multiplex methods and by plane-table surveys 1951. Aerial photographs taken 1947 Polyconic projection. 1927 North American datum 10,000-foot grid based on California coordinate system, zone 4 Dashed land lines indicate approximate locations Unchecked elevations are shown in brown



ROAD CLASSIFICATION table with columns for road types (Heavy-duty, Medium-duty, Light-duty, Unimproved dirt) and symbols for U.S. Route and State Route.

USGS Historical File Topographic Division U.S.G.S. FILE COPY Inspection and Editing.

INDEPENDENCE, CALIF. N3645-W11800/15 1951

FOR SALE BY U.S. GEOLOGICAL SURVEY, FEDERAL CENTER, DENVER, COLORADO OR WASHINGTON 25, D. C. A FOLDER DESCRIBING TOPOGRAPHIC MAPS AND SYMBOLS IS AVAILABLE ON REQUEST

FEB 3 1953 3200