

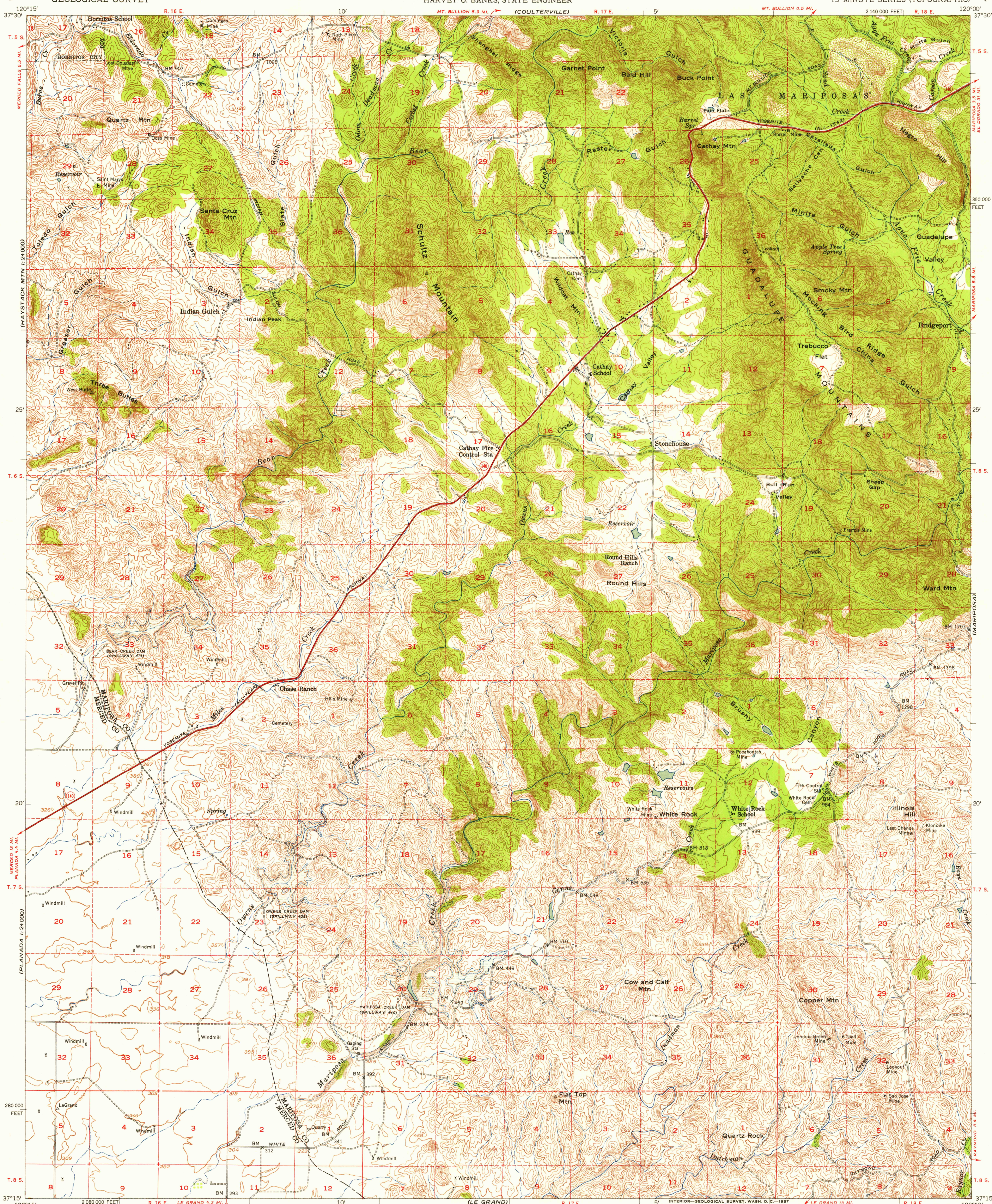
(MERCER FALLS)

UNITED STATES
DEPARTMENT OF THE INTERIOR
GEOLOGICAL SURVEY

STATE OF CALIFORNIA
GOODWIN J. KNIGHT, GOVERNOR
FRANK B. DURKEE, DIRECTOR OF PUBLIC WORKS
HARVEY O. BANKS, STATE ENGINEER

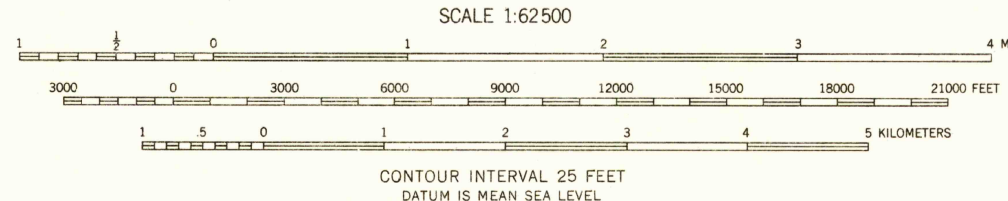
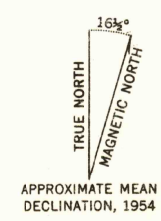
INDIAN GULCH QUADRANGLE
CALIFORNIA
15 MINUTE SERIES (TOPOGRAPHIC)

(EL PORTAL)



(PLANADORA 4.4 MI.)

Mapped, edited, and published by the Geological Survey
Control by USGS, USC&GS, and USCE
Topography and drainage by planimeter surveys 1915-16
Culture revised from aerial photographs taken 1951
Field check and partial contour revision 1954
Polyconic projection. 1927 North American datum
10,000-foot grid based on California coordinate system, zone 3
Dashed land lines indicate approximate location



Historical File
Topographic Division

ROAD CLASSIFICATION
Heavy-duty ——— Light-duty ———
Medium-duty ——— Unimproved dirt ———
U. S. Route (red circle) State Route (white circle)



U.S.G.S.
FILE COPY
TOPOGRAPHIC DIVISION

INDIAN GULCH, CALIF.
N 3715—W 12000/15
1954

JUN - 3 1957

FOR SALE BY U. S. GEOLOGICAL SURVEY, FEDERAL CENTER, DENVER, COLORADO OR WASHINGTON 25, D. C.
A FOLDER DESCRIBING TOPOGRAPHIC MAPS AND SYMBOLS IS AVAILABLE ON REQUEST

1560