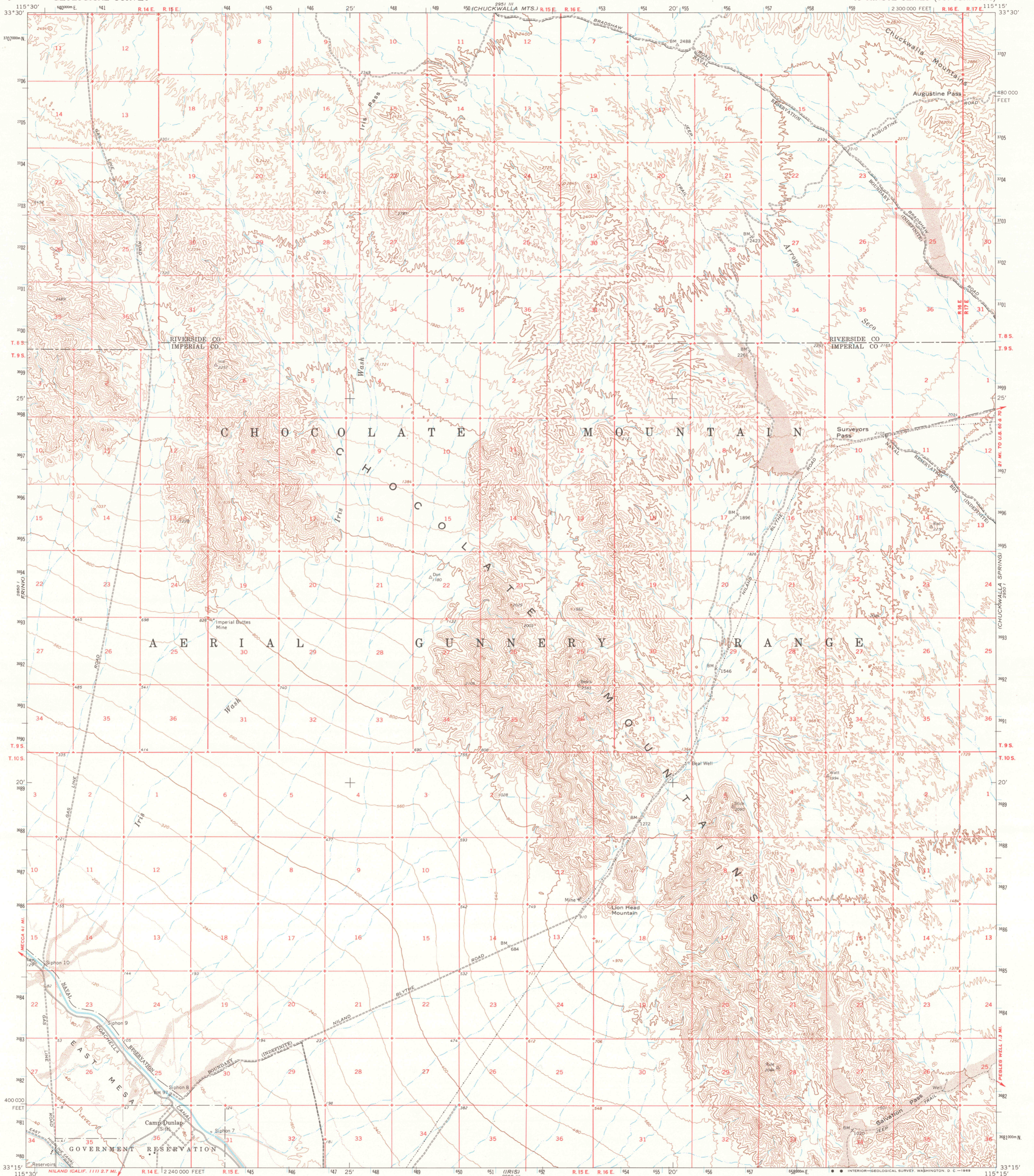
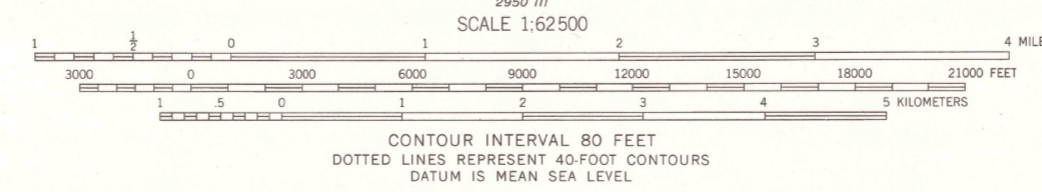
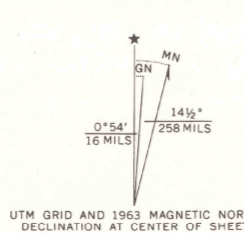


UNITED STATES
DEPARTMENT OF THE INTERIOR
GEOLOGICAL SURVEY

IRIS PASS QUADRANGLE
CALIFORNIA
15 MINUTE SERIES (TOPOGRAPHIC)



Mapped, edited, and published by the Geological Survey
Control by USGS, USC&GS, and USCE
SW quarter compiled in 1963 from 1:24 000-scale map
dated 1956, revised 1963. NE, NW, and SE quarters
topography by photogrammetric methods from aerial
photographs taken 1956. Field checked 1963
Polyconic projection. 1927 North American datum
10,000-foot grid based on California coordinate system, zone 6
1000-meter Universal Transverse Mercator grid ticks,
zone 11, shown in blue
Where omitted, land lines have not been established



CONTOUR INTERVAL 80 FEET
DOTTED LINES REPRESENT 40-FOOT CONTOURS
DATUM IS MEAN SEA LEVEL

ROAD CLASSIFICATION
Light-duty ————— Unimproved dirt - - - - -



The SW quarter also covered by 7.5 minute,
1:24 000-scale map: Iris Wash, 1956

IRIS PASS, CALIF.
N3315—W11515/15

1963
AMS 2950 IV—SERIES V795

THIS MAP COMPLIES WITH NATIONAL MAP ACCURACY STANDARDS
FOR SALE BY U. S. GEOLOGICAL SURVEY, DENVER, COLORADO 80225 OR WASHINGTON, D. C. 20242
A FOLDER DESCRIBING TOPOGRAPHIC MAPS AND SYMBOLS IS AVAILABLE ON REQUEST

MAY 26 1987