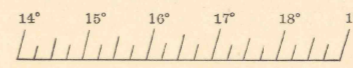


(Coyote Spring)

CALIFORNIA
IRIS PASS QUADRANGLE
GRID ZONE "F"
N3315 - W11515/15

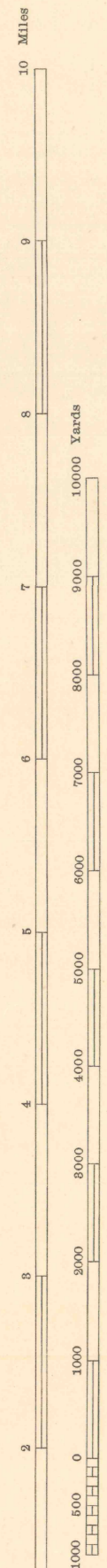
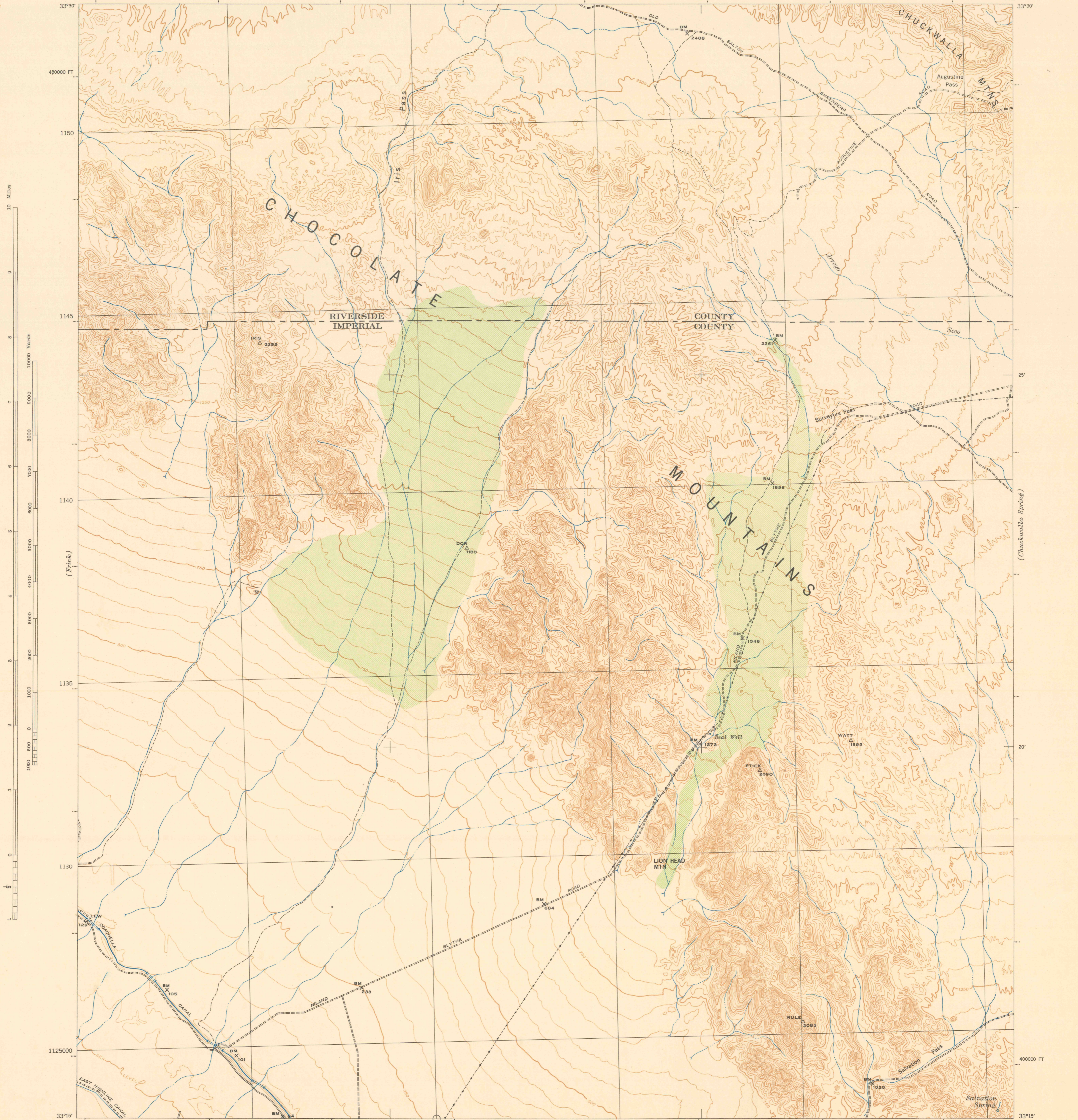
WAR DEPARTMENT
CORPS OF ENGINEERS, U. S. ARMY

FIRST EDITION - 29E 1



CALIFORNIA
IRIS PASS QUADRANGLE
GRID ZONE "F"
15 MINUTE SERIES

(Hobbes Well)

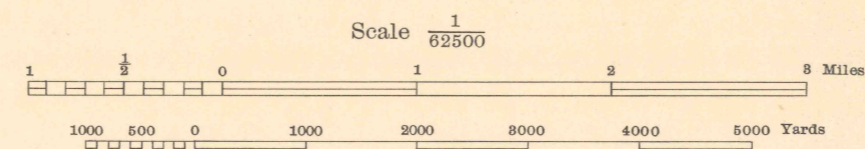


(Calipatria)

FIRST EDITION (29E 1) 1945
Prepared under the direction of the Chief of Engineers, U. S. Army, 1943.
Horizontal control by U. S. Coast and Geodetic Survey, 1934 and 29th Engineers, U. S. Army, 1941-1942.
Vertical control by U. S. Coast and Geodetic Survey, 1934, U. S. Bureau of Reclamation, 1941 and 29th Engineers, U. S. Army, 1941-1942.
Topography by 29th Engineers, U. S. Army, 1943, utilizing multiplex aero-projectors from Tandem T-3A (5 lens) aerial photographs.
Photography by 1st Photographic Squadron, Air Corps, U. S. Army, 1940.
Polyconic Projection, North American 1927 Datum.

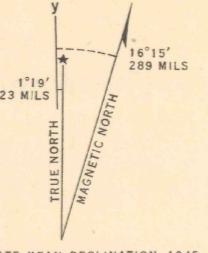
ROAD CLASSIFICATIONS
Dependable hard surface, heavy duty road
Loose surface graded, dry weather road
Secondary, hard surface, all weather road
Dirt road
U. S. Route 101
State Route 1
More than two lanes indicated by note with tick at point of change.
Road Data 1943

BRUSH



Scale 1/62500
Contour interval 50 feet
Datum is mean sea level (1929 Adj.)

FIVE THOUSAND YARD GRID COMPUTED FROM "GRID SYSTEM FOR PROGRESSIVE MAPS IN THE U. S. ZONE 'F'"; U. S. C. & G. S. SPECIAL PUBLICATION NO. 59 (THE LAST THREE DIGITS OF THE GRID NUMBERS ARE OMITTED)
CALIFORNIA STATE GRID ZONE 6 IS INDICATED BY DOTTED TICKS OUTSIDE THE NEAT LINE AT 10,000 FOOT INTERVALS
NOTE: OFFICERS USING THIS MAP WILL MARK HEREON CORRECTIONS AND ADDITIONS WHICH COME TO THEIR ATTENTION AND MAIL DIRECTLY TO THE CHIEF OF ENGINEERS, WASHINGTON, D. C.



APPROXIMATE MEAN DECLINATION 1945 FOR CENTER OF SHEET
ANNUAL MAGNETIC CHANGE 1" DECREASE
USE DIAGRAM ONLY TO OBTAIN NUMERICAL VALUES. TO DETERMINE MAGNETIC NORTH LINE, CONNECT THE PIVOT POINT "P" ON THE SOUTH EDGE OF THE MAP WITH THE VALUE OF THE ANGLE BETWEEN GRID AND MAGNETIC NORTH AS PLOTTED ON THE DEGREE SCALE AT THE NORTH EDGE OF THE MAP.

USCS
Historical File
Topographic Division

29TH ENGINEER REPRODUCTION PLANT, PORTLAND, OREGON
AMS NO 121208
1945

U. S. G. S.
FILE COPY
Inspection and Editing.

IRIS PASS, CALIF.
N3315 - W11515/15

(Jedediah)