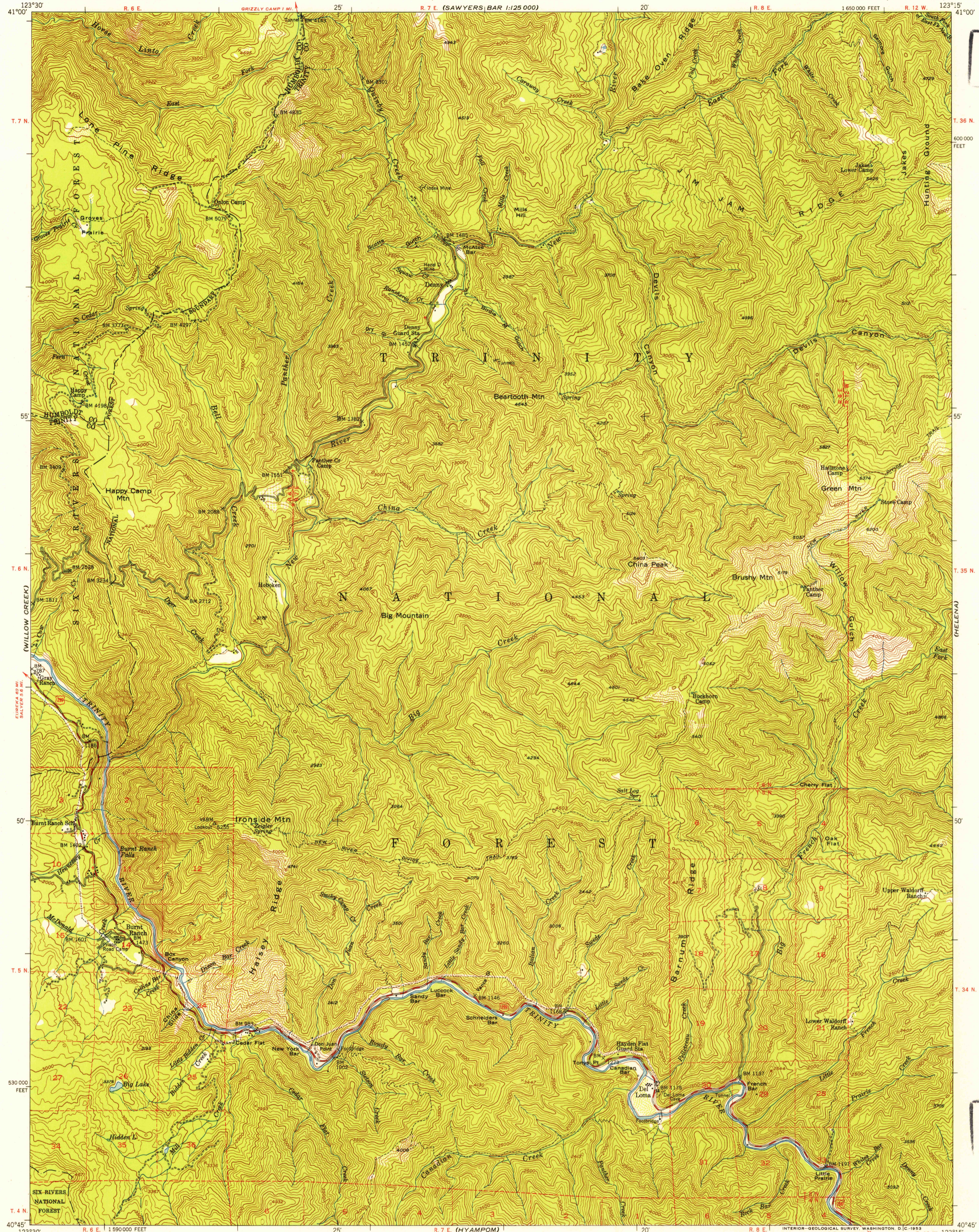


(SAWYERS BAR)
1:125,000



U.S.G.S.
FILE COPY
Inspection and Editing

T. 36 N.

600 000
FEET

T. 35 N.

500 000
FEET

T. 34 N.

400 000
FEET

T. 33 N.

300 000
FEET

T. 32 N.

200 000
FEET

T. 31 N.

100 000
FEET

T. 30 N.

0 000
FEET

T. 29 N.

100 000
FEET

T. 28 N.

0 000
FEET

T. 27 N.

0 000
FEET

T. 26 N.

0 000
FEET

T. 25 N.

123°30'

T. 7 N.

55'

T. 6 N.

50'

T. 5 N.

530 000
FEET

T. 4 N.

123°30'

T. 3 N.

40°45'

123°30'

T. 2 N.

40°45'

R. 6 E.

25'

R. 7 E. (SAWYERS BAR 1:125 000)

20'

R. 8 E.

R. 12 W.

123°15'

R. 6 E.

25'

R. 7 E. (HYAMPOM)

20'

R. 8 E.

R. 12 W.

123°15'

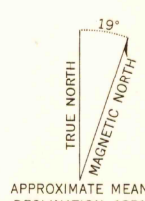
1 590 000 FEET

SCALE 1:62 500

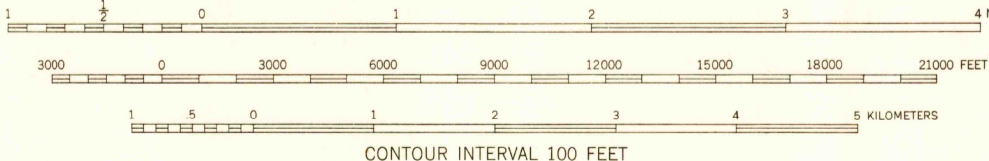
INTERIOR—GEOLOGICAL SURVEY, WASHINGTON, D.C.—1953
BIG BAR 14 MI.
WEAVERVILLE 24 MI.

Mapped, edited, and published by the Geological Survey
Control by USGS and USC&GS

Topography from aerial photographs by multiplex methods
Aerial photographs taken 1947. Advance field check 1951
Polyconic projection. 1927 North American datum
10,000-foot grid based on California coordinate system, zone 1
Certain land lines are omitted because of insufficient data. All recovered corners are shown
Dashed land lines indicate approximate locations
Unchecked elevations are shown in brown



APPROXIMATE MEAN
DECLINATION, 1951



CONTOUR INTERVAL 100 FEET
DATUM IS MEAN SEA LEVEL

USGS
Historical File
Topographic Division

ROAD CLASSIFICATION
heavy-duty 4 LANE 16 LANE Light-duty
Medium-duty 4 LANE 16 LANE Unimproved dirt

U.S. Route State Route



QUADRANGLE LOCATION

U.S.G.S.
FILE COPY
Inspection and Editing

IRONSIDE MTN., CALIF.
N4045—W12315/15
1951

THIS MAP COMPLIES WITH NATIONAL MAP ACCURACY STANDARDS
FOR SALE BY U.S. GEOLOGICAL SURVEY, FEDERAL CENTER, DENVER, COLORADO OR WASHINGTON 25, D. C.
A FOLDER DESCRIBING TOPOGRAPHIC MAPS AND SYMBOLS IS AVAILABLE ON REQUEST

U.S.G.S.
FILE COPY
Inspection and Editing

(MAYFORK)