

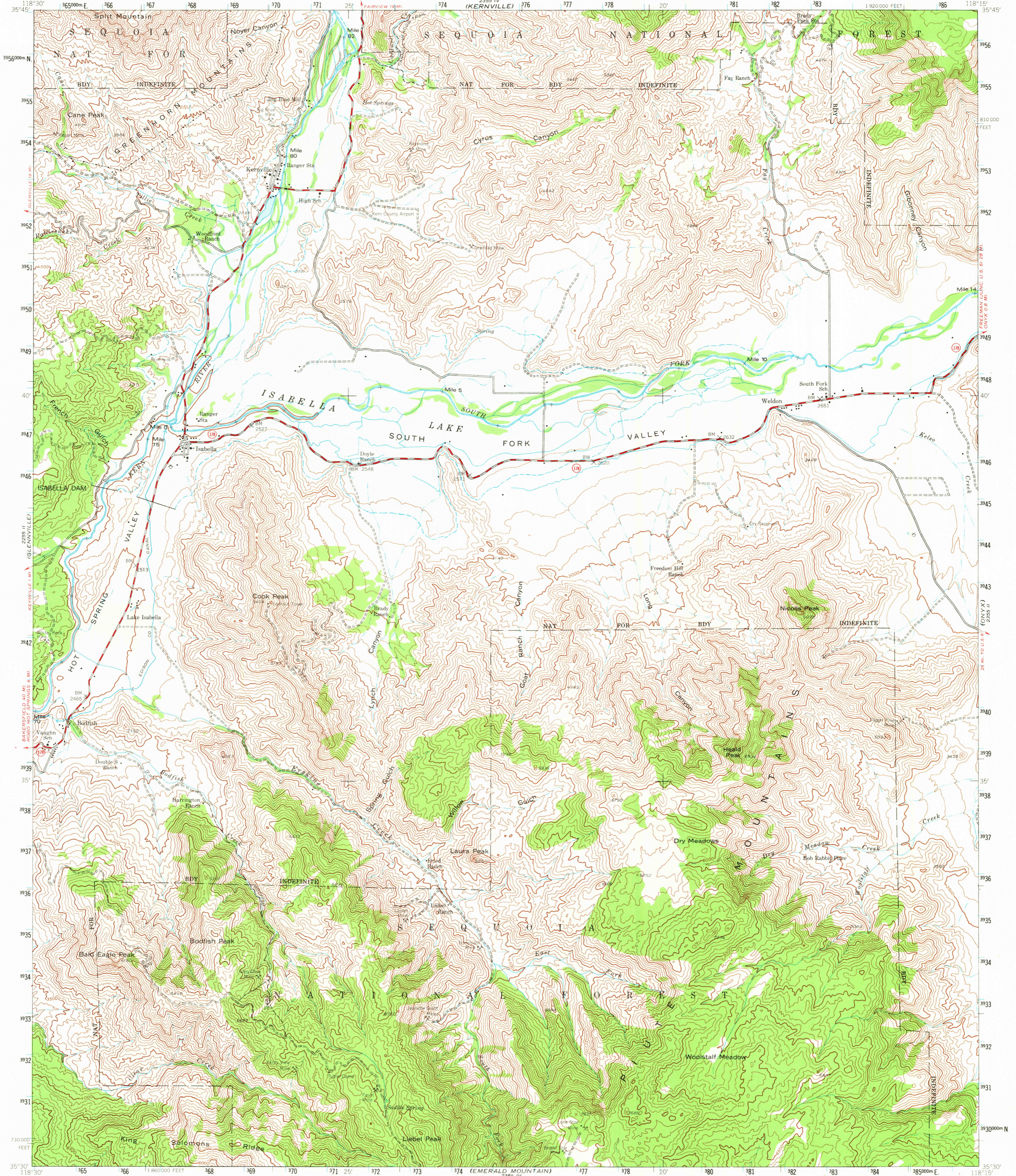
2295 III
CALIFORNIA
HOT SPRINGS

2295 I
LAMONT PEAK

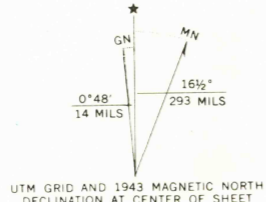
UNITED STATES
DEPARTMENT OF THE INTERIOR
GEOLOGICAL SURVEY

UNITED STATES
DEPARTMENT OF THE ARMY
CORPS OF ENGINEERS
(KERNVILLE)

ISABELLA DAM QUADRANGLE
CALIFORNIA-KERN CO.
15 MINUTE SERIES (TOPOGRAPHIC)



Mapped by the Army Map Service
Published for civil use by the Geological Survey
Control by USGS, and USC&GS
Topography from aerial photographs by photogrammetric methods
Aerial photographs taken 1943
Polyconic projection, 1927 North American datum
10,000 foot grid based on California coordinate system,
zone 5
1000-meter Universal Transverse Mercator grid ticks,
zone 11, shown in blue
To place on E... predicted North American Datum 1983
move the projection lines 7 meters north and
84 meters east
Land lines are omitted because of insufficient data
Dashed blue lines indicate approximate area inundated
by Isabella Lake
There may be private holdings within the boundaries of
the National or State reservations shown on this map



THIS MAP COMPLIES WITH NATIONAL MAP ACCURACY STANDARDS
FOR SALE BY U. S. GEOLOGICAL SURVEY, DENVER, COLORADO 80225, OR RESTON, VIRGINIA 22092
A FOLDER DESCRIBING TOPOGRAPHIC MAPS AND SYMBOLS IS AVAILABLE ON REQUEST

ROAD CLASSIFICATION
Medium-duty ——— Light-duty ———
Unimproved dirt - - - - - State Route



ISABELLA DAM, CALIF.
N3530-W11815/15

1943
DMA 2355 III-SERIES V795

USGS
HISTORICAL FILE
NATIONAL MAPPING DIVISION

JUN 29 1972

4100