

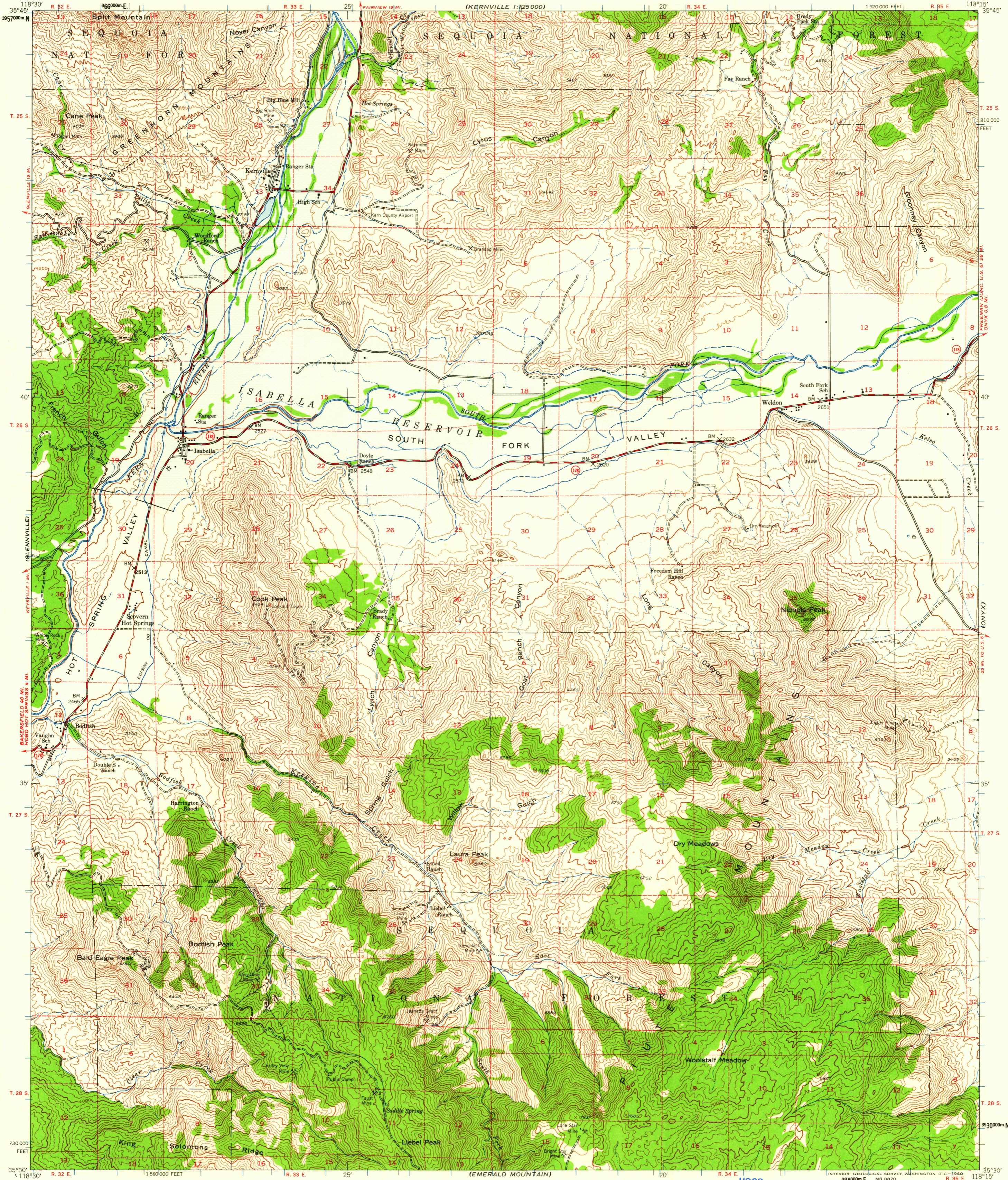
(TOBIAS PEAK)
1:125,000

(KERNVILLE)
1:125,000

UNITED STATES
DEPARTMENT OF THE INTERIOR
GEOLOGICAL SURVEY

UNITED STATES
DEPARTMENT OF THE ARMY
CORPS OF ENGINEERS
(KERNVILLE 1:125,000)

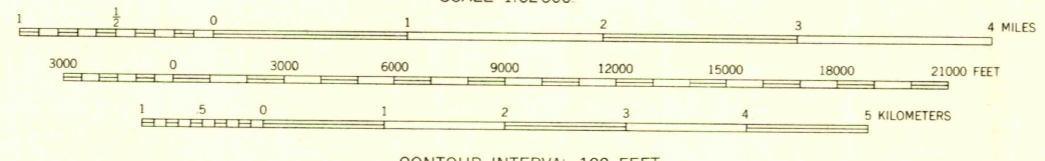
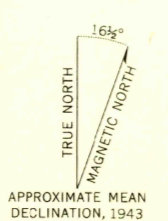
ISABELLA QUADRANGLE
CALIFORNIA—KERN CO
15 MINUTE SERIES (TOPOGRAPHIC)



(BRECKENRIDGE MOUNTAIN)

(GROSS MOUNTAIN)

Map by the Army Map Service
Published for civil use by the Geological Survey
Control by USGS and USC&GS
Topography from aerial photographs by photogrammetric methods
Aerial photographs taken 1943
Polyconic projection. 1927 North American datum
10,000-foot grid based on California coordinate system,
zone 5
Dashed land lines indicate approximate locations.
Certain land lines are omitted in T. 25 S.—R. 34 E.,
T. 25 S.—R. 35 E., and T. 26 S.—R. 35 E.
because of insufficient data
Dashed blue lines indicate approximate area inundated
by Isabella Reservoir
1000-meter Universal Transverse Mercator grid ticks,
zone 11, shown in blue



CONTOUR INTERVAL 100 FEET
DATUM IS MEAN SEA LEVEL

THIS MAP COMPLIES WITH NATIONAL MAP ACCURACY STANDARDS
FOR SALE BY U. S. GEOLOGICAL SURVEY, DENVER 25, COLORADO OR WASHINGTON 25, D. C.
A FOLDER DESCRIBING TOPOGRAPHIC MAPS AND SYMBOLS IS AVAILABLE ON REQUEST

USGS
Historical File
Topographic Division

ROAD CLASSIFICATION
Medium-duty — Light-duty
Unimproved dirt —
State Route



U.S.G.S.
FILE COPY
TOPOGRAPHIC DIVISION

ISABELLA, CALIF.
N3530—W11815/15
1943

JAN 7 1960

5795