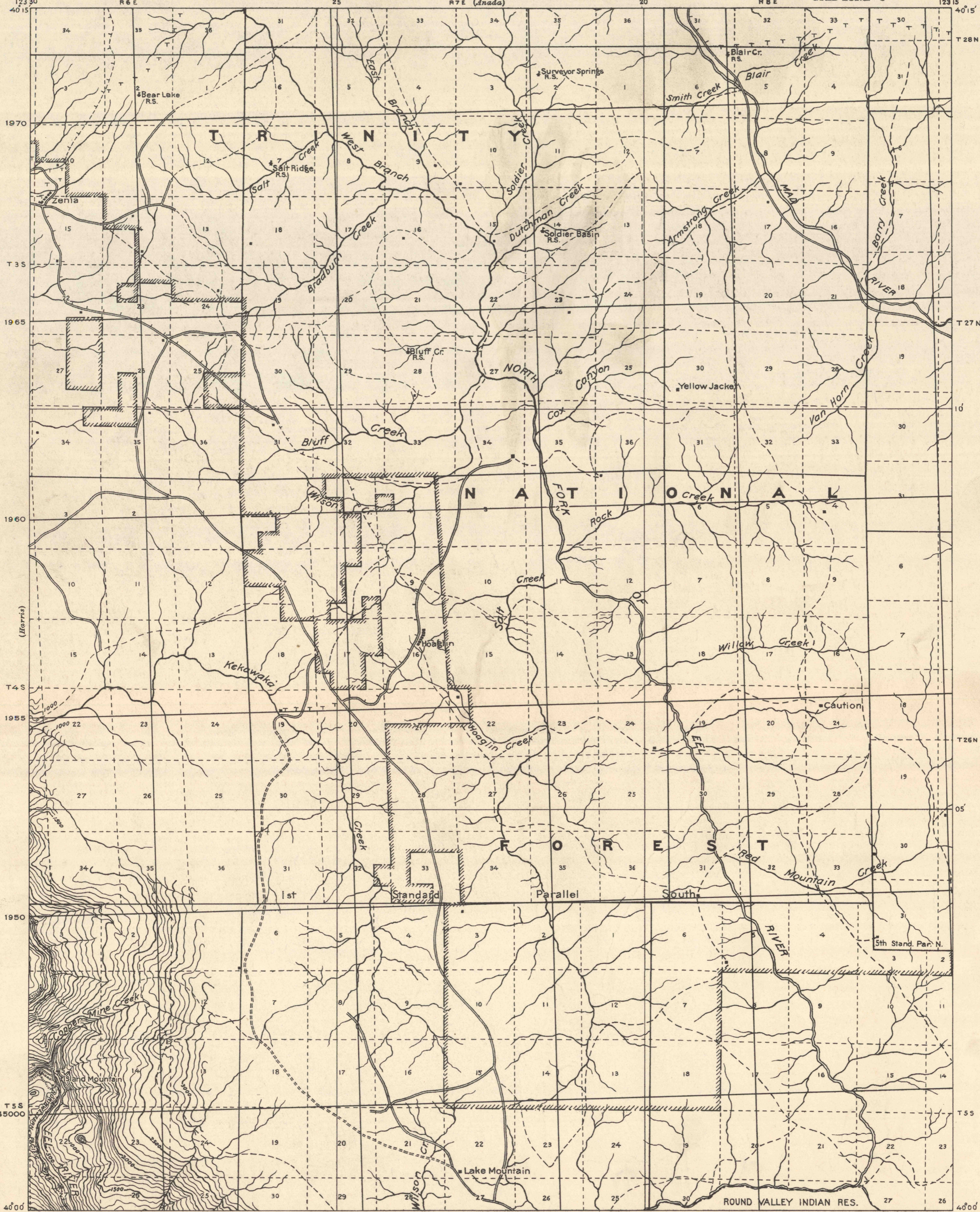


(South Fork River)

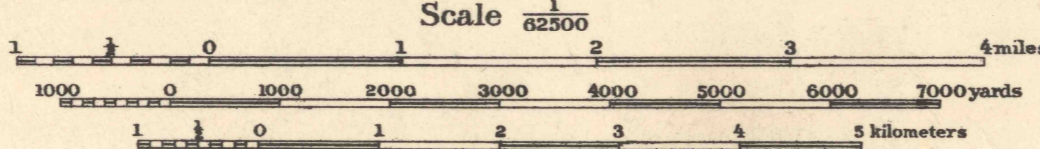
CORPS OF ENGINEERS, U. S. ARMY
TACTICAL MAP

ADVANCE SHEET
1645:1000; /49;

CALIFORNIA
ISLAND MOUNTAIN QUADRANGLE
GRID ZONE "C"



(Cummins)
R 6 E 770000
Compilation under the direction of Major A.R. Ehrnbeck,
Corps of Engineers, U.S.A., Engineer, 9th Corps Area,
1921.
General Land Office, Trinity Co., U.S. Forestry Maps
and Surveys by Co. "F" Engineers, 1916.

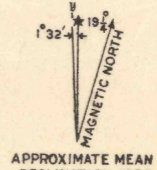


Contour Interval 100 feet
Datum is mean sea level

FIVE THOUSAND YARD GRID COMPUTED FROM "GRID SYSTEM FOR PROGRESSIVE MAPS
IN THE U. S. C. & G. S. SPECIAL PUBLICATION NO. 59.
(THE LAST THREE DIGITS OF THE GRID NUMBERS ARE OMITTED)

NOTE: OFFICERS USING THIS MAP WILL MARK HEREON CORRECTIONS AND ADDITIONS WHICH COME
TO THEIR ATTENTION AND MAIL DIRECT TO "THE CHIEF OF ENGINEERS, WASHINGTON, D.C."

Now Kettenpom



101501

FILE COPY
MAP INFORMATION OFFICE

ISLAND MOUNTAIN

CALIF.