

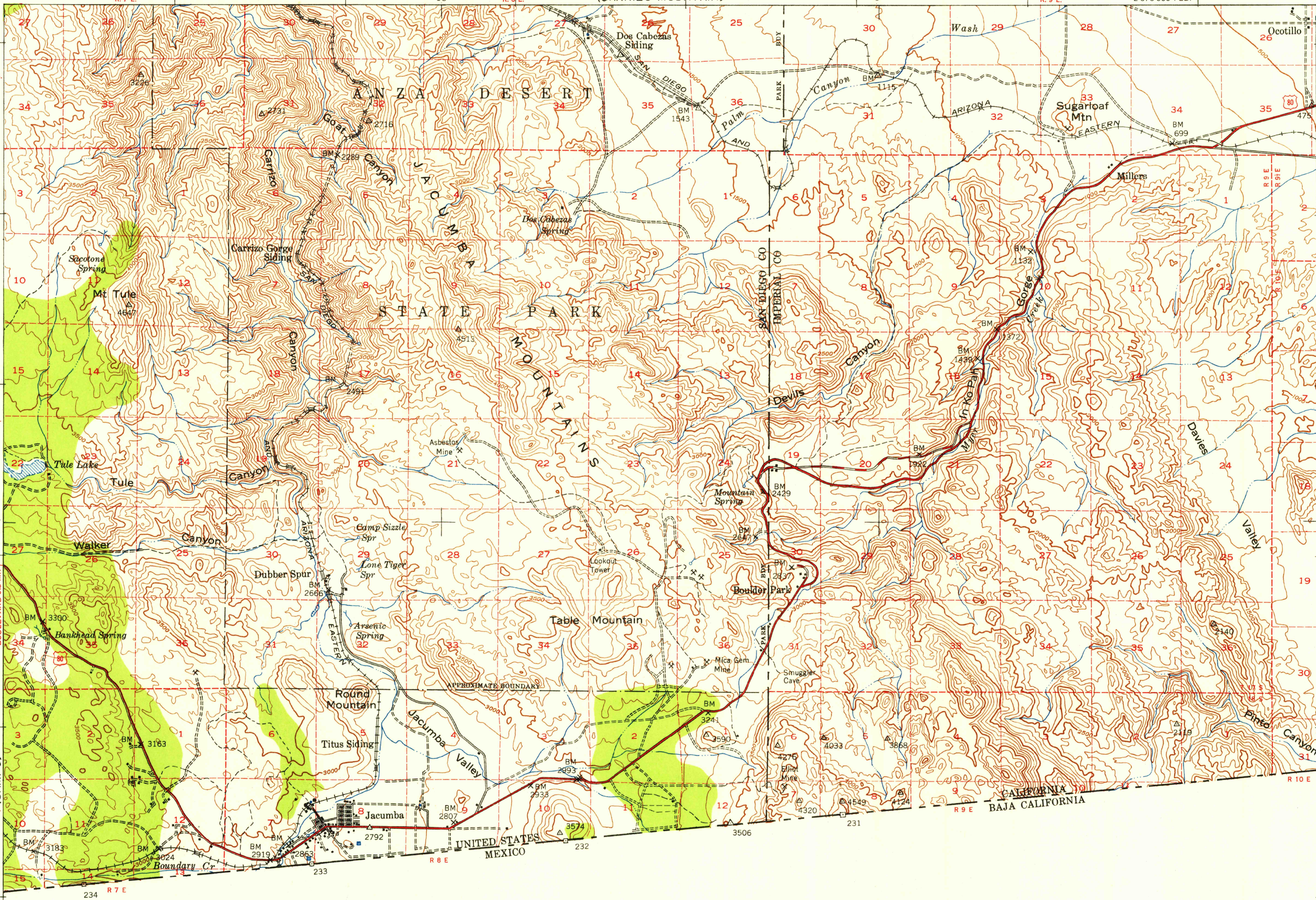
UNITED STATES
DEPARTMENT OF THE INTERIOR
GEOLOGICAL SURVEY

UNITED STATES
DEPARTMENT OF THE ARMY
CORPS OF ENGINEERS
(CARRIZO MOUNTAIN)

U.S.G.S.
FILE COPY
TOPOGRAPHIC DIVISION

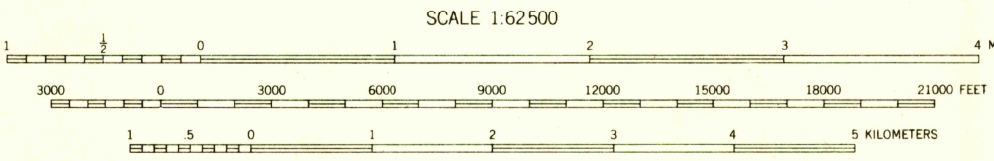
JACUMBA QUADRANGLE
CALIFORNIA
15 MINUTE SERIES (TOPOGRAPHIC)

(PLASTER CITY)



Mapped by the Army Map Service
Published for civil use by the Geological Survey
Control by USGS, USC&GS, USCE, and IBC
Topography from aerial photographs by photogrammetric methods
Aerial photographs taken 1939
Polyconic projection. 1927 North American datum
10,000-foot grid based on California coordinate system,
zone 6
Dashed land lines indicate approximate locations
Locations of all boundaries are approximate

TRUE NORTH
MAGNETIC NORTH
APPROXIMATE MEAN
DECLINATION, 1939



CONTOUR INTERVAL 100 FEET
DATUM IS MEAN SEA LEVEL

FOR SALE BY U.S. GEOLOGICAL SURVEY, FEDERAL CENTER, DENVER, COLORADO OR WASHINGTON 25, D. C.
A FOLDER DESCRIBING TOPOGRAPHIC MAPS AND SYMBOLS IS AVAILABLE ON REQUEST

USGS
Historical File
Topographic Division

ROAD CLASSIFICATION 1943
Heavy-duty 4 LANE 16 LANE Light-duty
Medium-duty 4 LANE 16 LANE Unimproved dirt
U. S. Route State Route

U.S.G.S.
FILE COPY
TOPOGRAPHIC DIVISION
JACUMBA, CALIF. JUN 13 1956
N3230-W11600/15
1580