

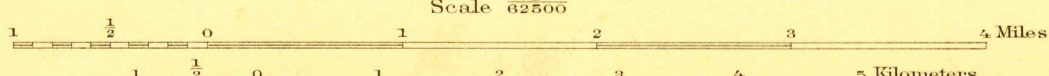
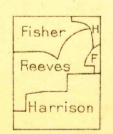


U. S. G. S.  
FILE COPY  
Inspection and Editing.

U. S. G. S.  
FILE COPY  
Inspection and Editing.

Woods  
Woods and brush  
Brush

R. B. Marshall, Chief Geographer.  
Geo. R. Davis, Geographer in charge.  
Glenn S. Smith, Topographic Engineer,  
in charge military surveys.  
Topography by J. P. Harrison,  
Roscoe Reeves, and C. R. Fisher.  
Control by U.S. Coast and Geodetic Survey and L. F. Biggs.  
Surveyed in 1917.



Contour interval 50 feet.  
Datum is mean sea level.

USGS  
Historical File  
Topographic Division



Polyconic projection, North American datum.

NOV 17 1921 4070

JAMESBURG  
Edition of 1921.