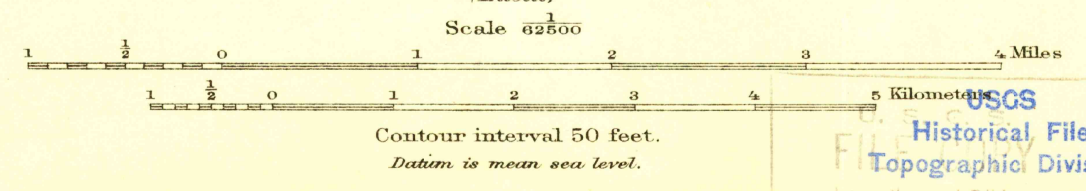
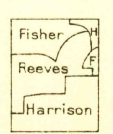
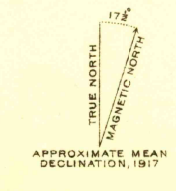




R.B. Marshall, Chief Geographer.
Geo. R. Davis, Geographer in charge.
Glenn S. Smith, Topographic Engineer,
in charge military surveys.
Topography by J.P. Harrison,
Roscoe Reeves, and C.R. Fisher.
Control by U.S. Coast and Geodetic Survey and L.F. Biggs.
Surveyed in 1917.



USGS
Historical File
Topographic Division
Inspection and Editing



Polyconic projection, North American datum.
CALIF. JAMESBURG
Edition of 1921, reprinted 1933
MAR 31 1933 (2435)