

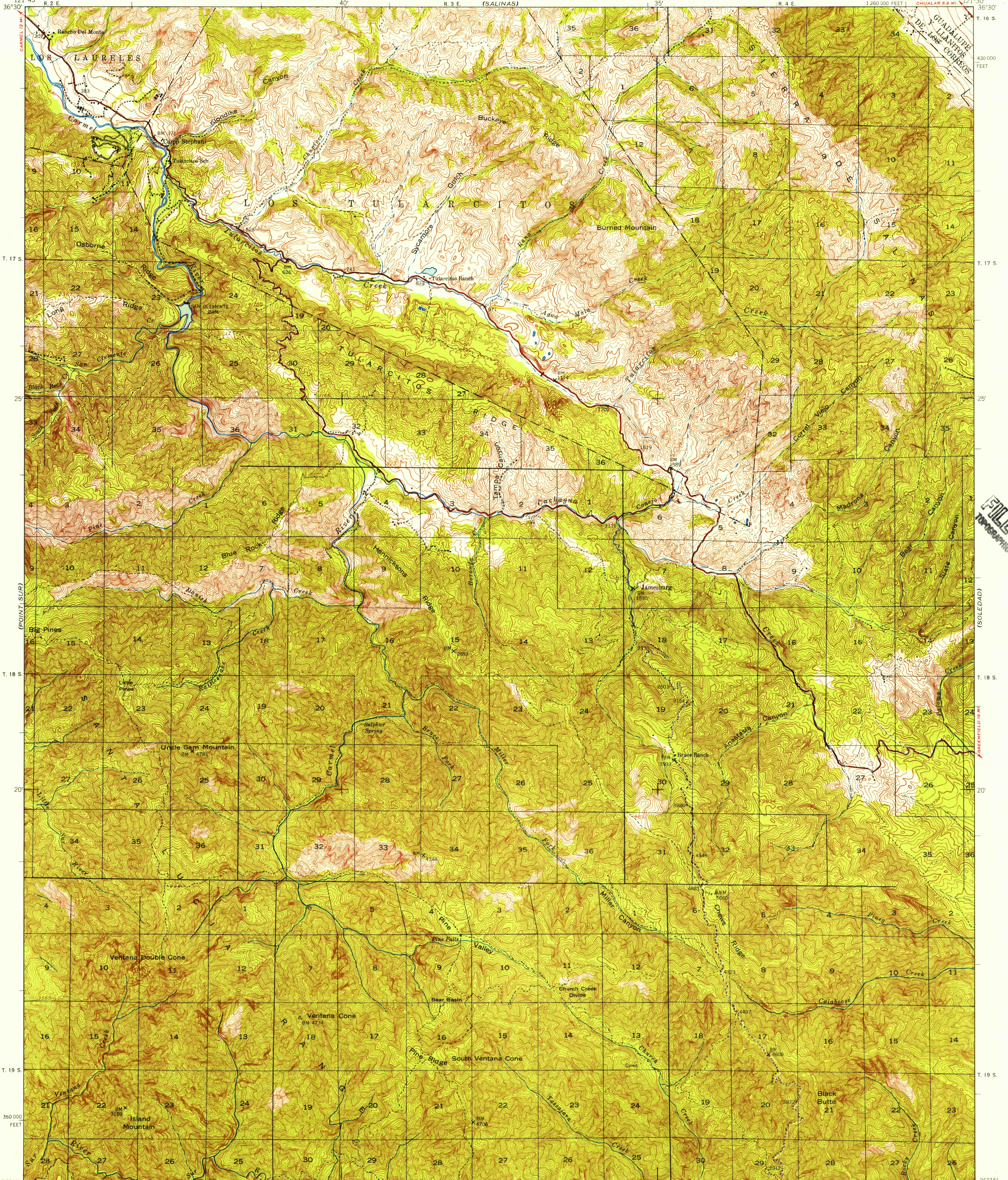
(MONTEREY)

UNITED STATES
DEPARTMENT OF THE INTERIOR
GEOLOGICAL SURVEY

UNITED STATES
DEPARTMENT OF THE ARMY
CORPS OF ENGINEERS

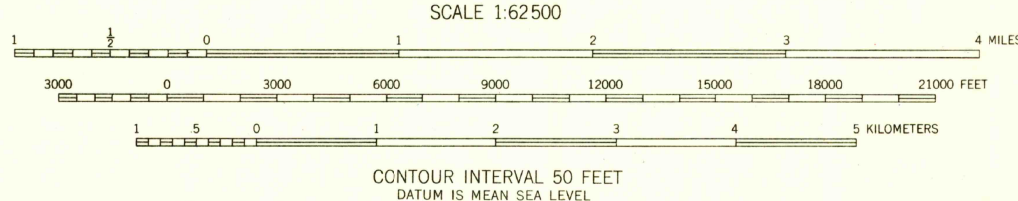
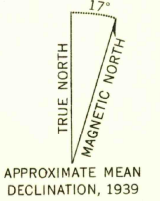
JAMESBURG QUADRANGLE
CALIFORNIA—MONTEREY CO.
15 MINUTE SERIES (TOPOGRAPHIC)

(GONZALES)



U.S.G.S.
FILE COPY
TOPOGRAPHIC DIVISION

Mapped by the Geological Survey
Revised by the Army Map Service
Published for civil use by the Geological Survey
Control by USGS and USC&GS
Topography by plane-table surveys 1917
Planimetric detail revised from aerial photographs taken 1939
Polyconic projection. 1927 North American datum
10,000-foot grid based on California coordinate system,
zone 4
Unchecked elevations are shown in brown



USGS
Historical File
Topographic Division

ROAD CLASSIFICATION 1940
Heavy-duty 4 LANE 16 LANE Light-duty
Medium-duty 4 LANE 16 LANE Unimproved dirt
U.S. Route State Route



U.S.G.S.
FILE COPY
TOPOGRAPHIC DIVISION

JAMESBURG, CALIF.
N3615-W12130/15
1939

FOR SALE BY U. S. GEOLOGICAL SURVEY, DENVER 2, COLORADO OR WASHINGTON 25, D. C.
A FOLDER DESCRIBING TOPOGRAPHIC MAPS AND SYMBOLS IS AVAILABLE ON REQUEST

JAN 10 1943