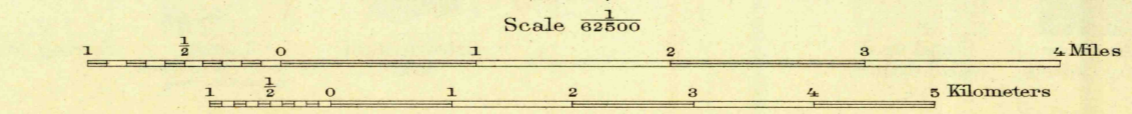
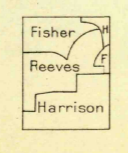


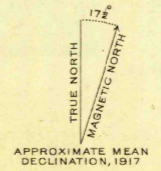


R.B. Marshall, Chief Geographer.  
Geo. R. Davis, Geographer in charge.  
Glenn S. Smith, Topographic Engineer,  
in charge military surveys.  
Topography by J.P. Harrison,  
Roscoe Reeves, and C.R. Fisher.  
Control by U.S. Coast and Geodetic Survey and L.F. Biggs.  
Surveyed in 1917.



Contour interval 50 feet.  
Datum is mean sea level.

USGS  
Historical File  
Topographic Division



Polyconic projection, North American datum.

CALIF.  
JAMESBURG  
Edition of 1921,  
reprinted 1940  
N3615-W12130/15

APR 26 1940

2357