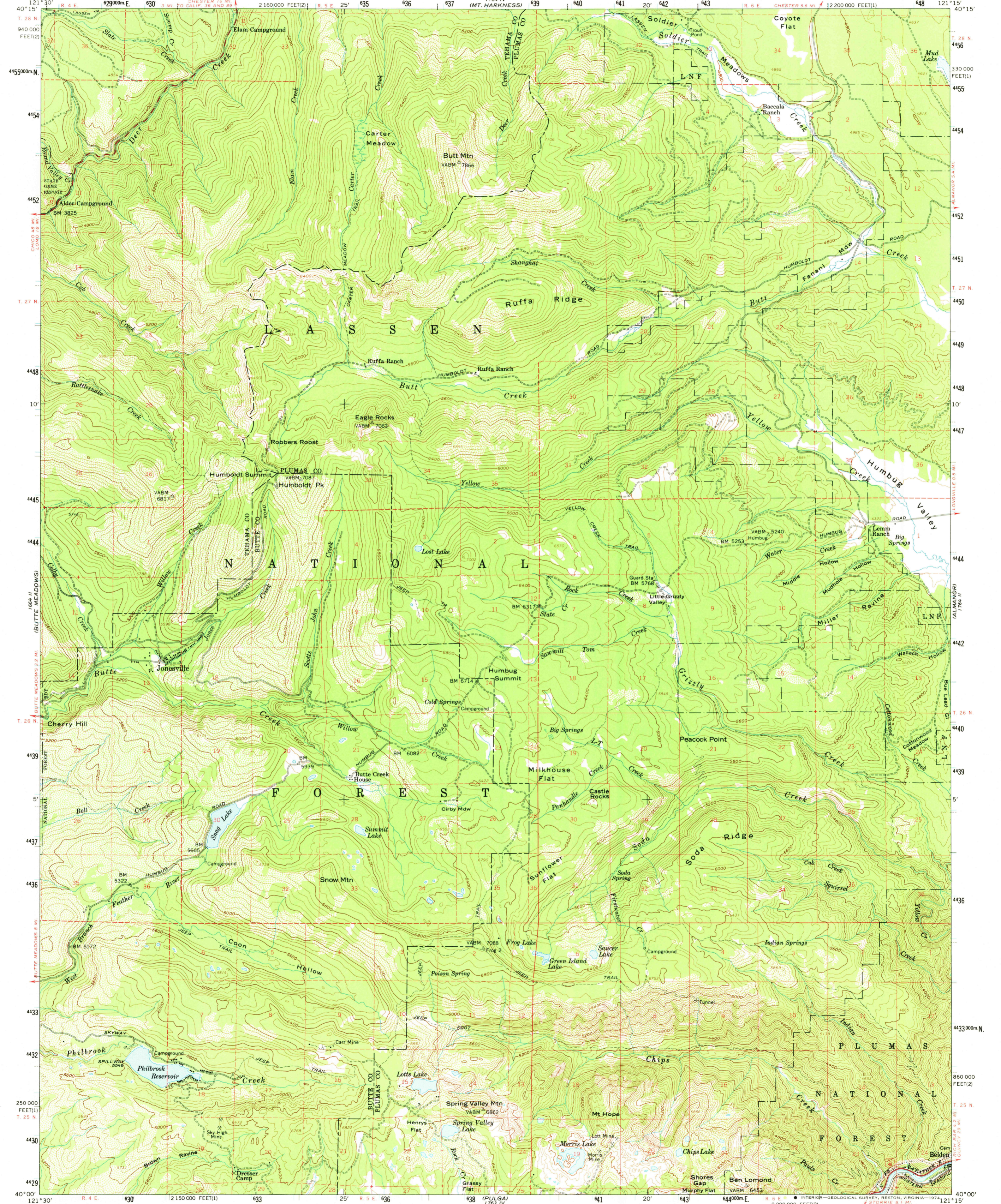


UNITED STATES
DEPARTMENT OF THE INTERIOR
GEOLOGICAL SURVEY

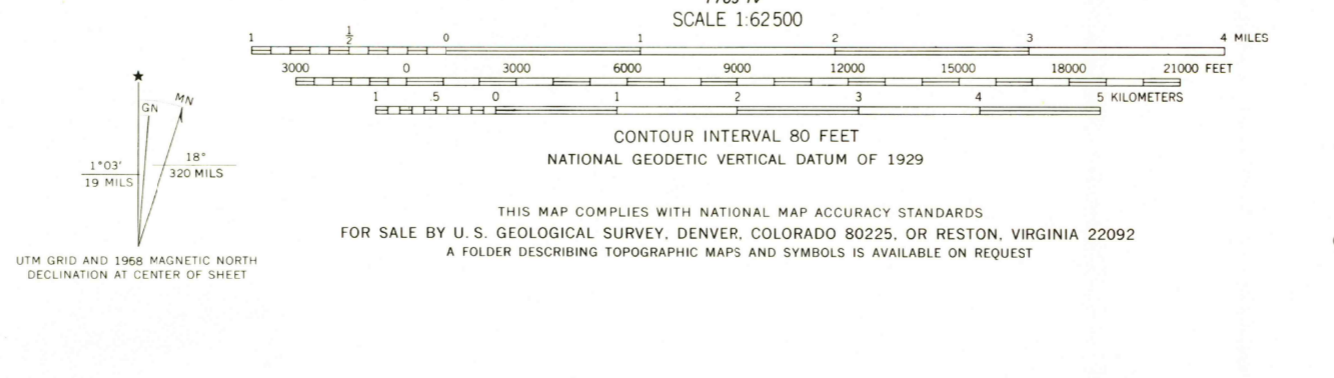
UNITED STATES
DEPARTMENT OF AGRICULTURE
FOREST SERVICE

STATE OF CALIFORNIA
DEPARTMENT OF WATER RESOURCES

JONESVILLE QUADRANGLE
CALIFORNIA
15 MINUTE SERIES (TOPOGRAPHIC)



Maped by the U.S. Forest Service
Edited and published by the Geological Survey
Control by USGS, USCGS, and U.S. Forest Service
Topography from aerial photographs by photogrammetric methods
Aerial photographs taken 1951, 1952, and 1956
Field check by USGS 1958
Polyconic projection. 1927 North American datum
10,000-foot grids based on California coordinate system,
zones 1 and 2
1000-meter Universal Transverse Mercator grid ticks,
zone 10, shown in blue
Dashed land lines indicate approximate locations
Land lines unsurveyed in T. 25 N. - R. 4 E. and parts of
T. 26 N. - R. 5 E., T. 27 N. - R. 5 and 6 E., and T. 28 N. - R. 5 E.
Unchecked elevations are shown in brown



ROAD CLASSIFICATION
Heavy-duty ——— Light-duty ———
Medium-duty ——— Unimproved dirt ———
U.S. Route ——— State Route ———

QUADRANGLE LOCATION

JONESVILLE, CALIF.
N4000-W12115/15
1958
AMS 1764 III-SERIES V795

NOV 22 1974