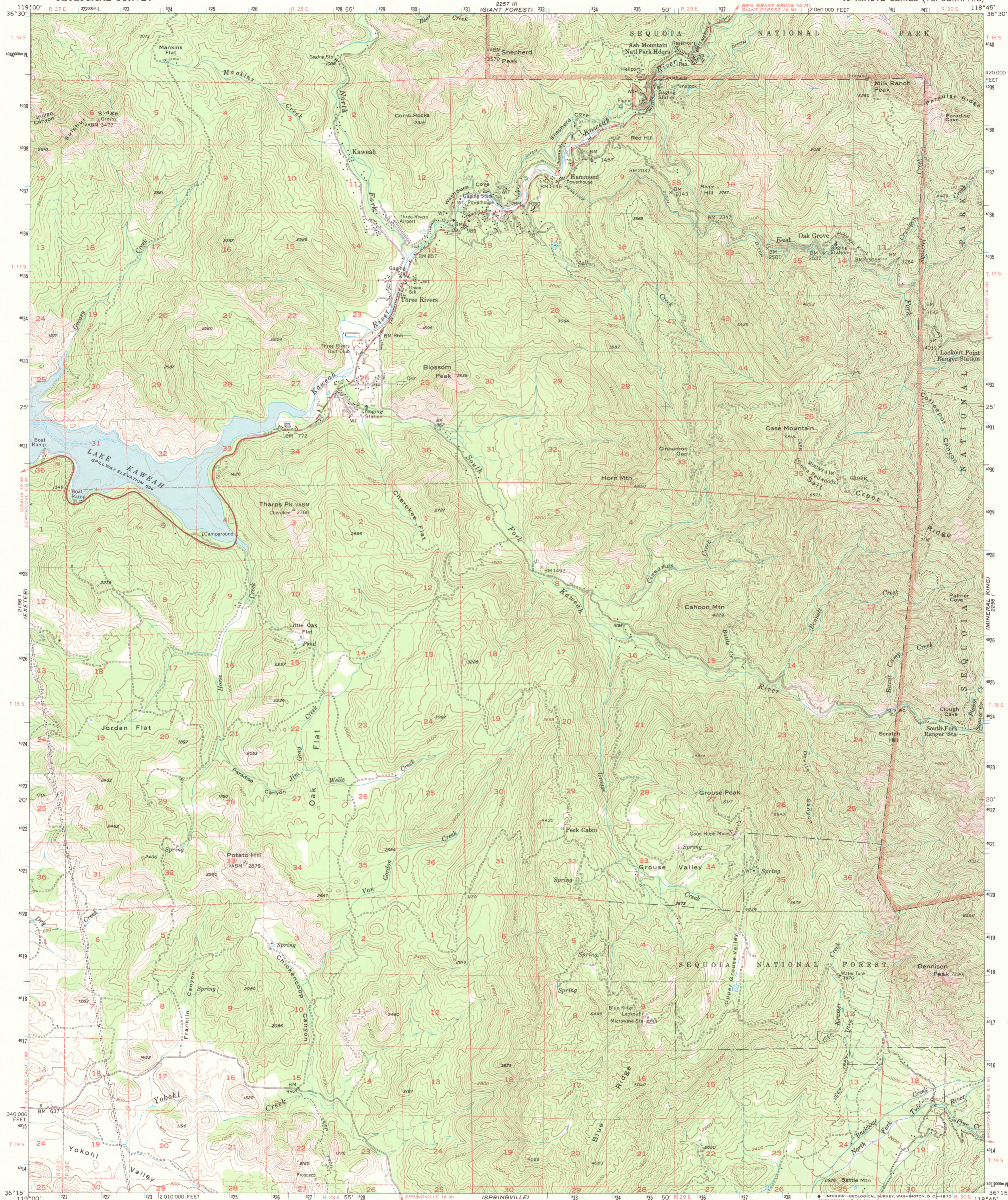
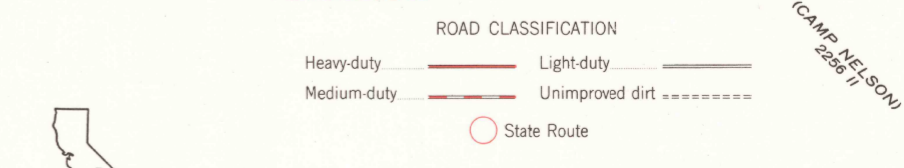
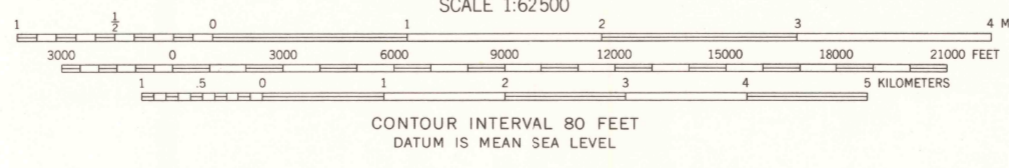


USGS NMID HISTORICAL MAP  
AUG 02 1989  
REC'D FILE COPY



Mapped, edited, and published by the Geological Survey in cooperation with California Department of Water Resources Control by USGS, USC&GS, and U.S. Forest Service. Topography by photogrammetric methods from aerial photographs taken 1954. Field checked 1957. Limited revision in 1967. Polyconic projection. 1927 North American datum. 10,000-foot grid based on California coordinate system, zone 4. 1000-meter Universal Transverse Mercator grid ticks, zone 11, shown in blue. Certain land lines are omitted because of insufficient data.



THIS MAP COMPLIES WITH NATIONAL MAP ACCURACY STANDARDS  
FOR SALE BY U.S. GEOLOGICAL SURVEY, DENVER, COLORADO 80225, OR RESTON, VIRGINIA 22092  
A FOLDER DESCRIBING TOPOGRAPHIC MAPS AND SYMBOLS IS AVAILABLE ON REQUEST

KAWEAH, CALIF.  
N3615-W11845/15  
1957  
LIMITED REVISION 1967  
AMS 2259 IV-SERIES V795