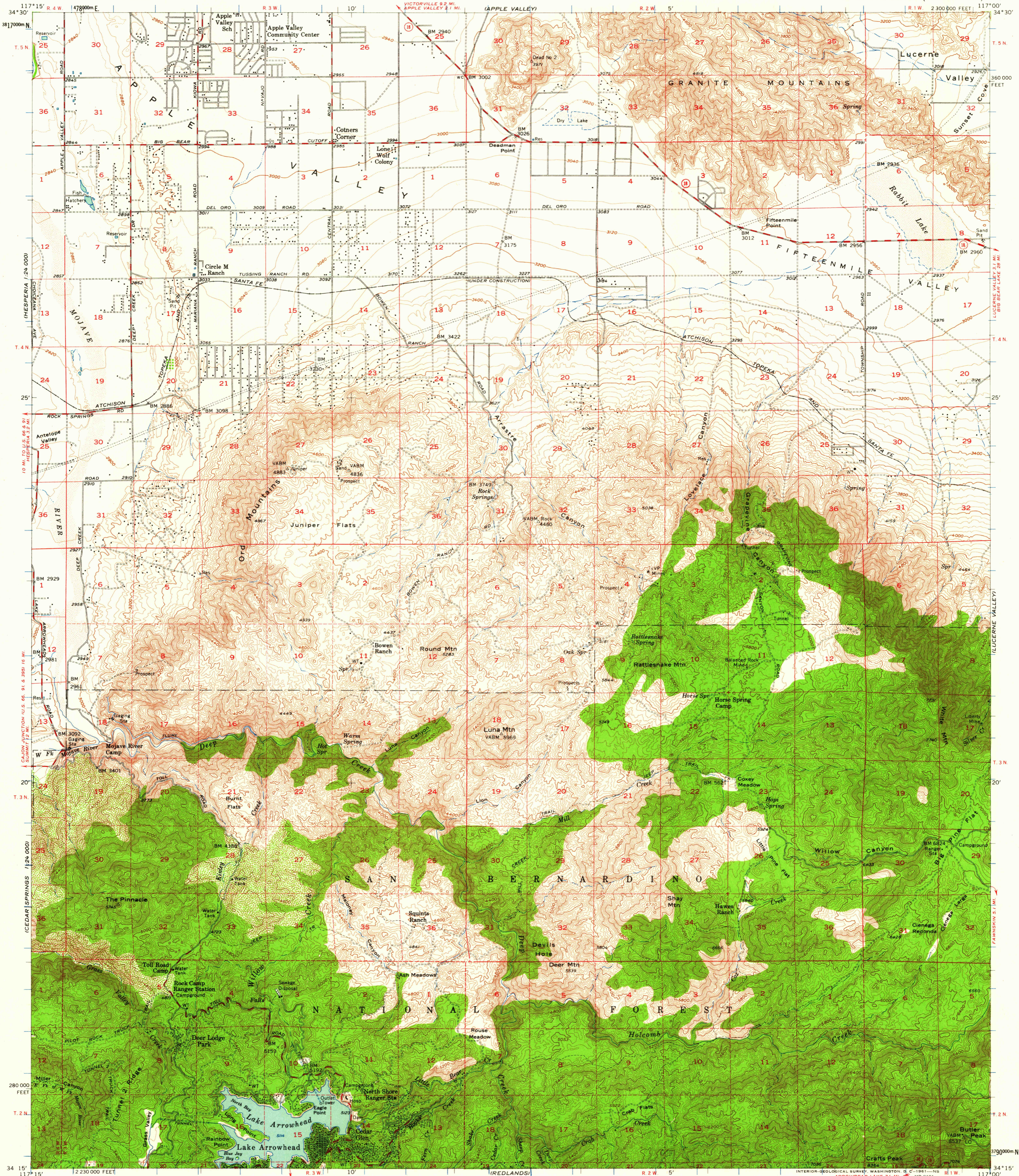


(VICTORVILLE)

UNITED STATES  
DEPARTMENT OF THE INTERIOR  
GEOLOGICAL SURVEY

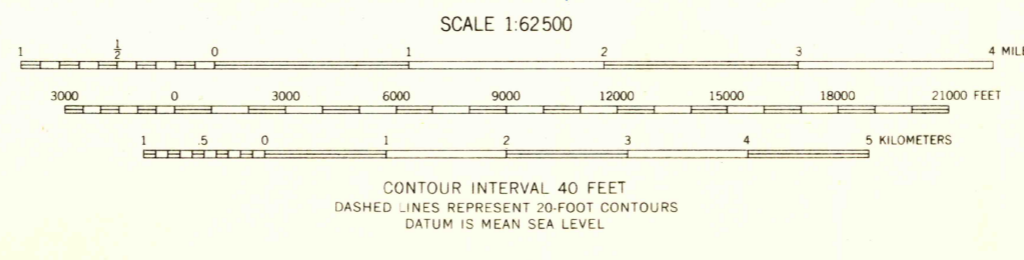
LAKE ARROWHEAD QUADRANGLE  
CALIFORNIA—SAN BERNARDINO CO.  
15 MINUTE SERIES (TOPOGRAPHIC)

(ORD MOUNTAINS)



Mapped, edited, and published by the Geological Survey  
Control by USGS, USC&GS, and USCE  
Topography from aerial photographs by photogrammetric methods  
Aerial photographs taken 1952. Field check 1956  
Polyconic projection. 1927 North American datum  
10,000-foot grid based on California coordinate system, zone 5  
Dashed land lines indicate approximate locations  
Unchecked elevations are shown in brown  
1000-meter Universal Transverse Mercator grid ticks,  
zone 11, shown in blue

APPROXIMATE MEAN  
DECLINATION, 1956



ROAD CLASSIFICATION  
Medium duty — Light duty  
Unimproved dirt —  
State Route

FOR SALE BY U. S. GEOLOGICAL SURVEY, DENVER 25, COLORADO OR WASHINGTON 25, D. C.  
A FOLDER DESCRIBING TOPOGRAPHIC MAPS AND SYMBOLS IS AVAILABLE ON REQUEST

USGS  
Historical File  
Topographic Division

U.S.G.S.  
FILE COPY  
TOPOGRAPHIC DIVISION

LAKE ARROWHEAD, CALIF.  
N3415—W11700/15  
1956

(SAN BERNARDINO)  
JAN - 5 1957  
6055